

Office Copy

Date Purchased _____ Machine Serial No. _____

06/16/2006 — 18mad
Oct 20/00 — 3 "

Size of Agitator _____ Options _____

The key number system in this parts book is arranged as follows:

- ⊙ - Key numbers with two circles denotes main assemblies.
- - Key numbers with one circle are individual parts

Please order parts by number

HUSKY
FARM EQUIPMENT

AUGER AGITATOR

485-00-00-000 – 24' AUGER AGITATOR

484-00-00-000 – 22' AUGER AGITATOR

482-00-00-000 – 20' AUGER AGITATOR

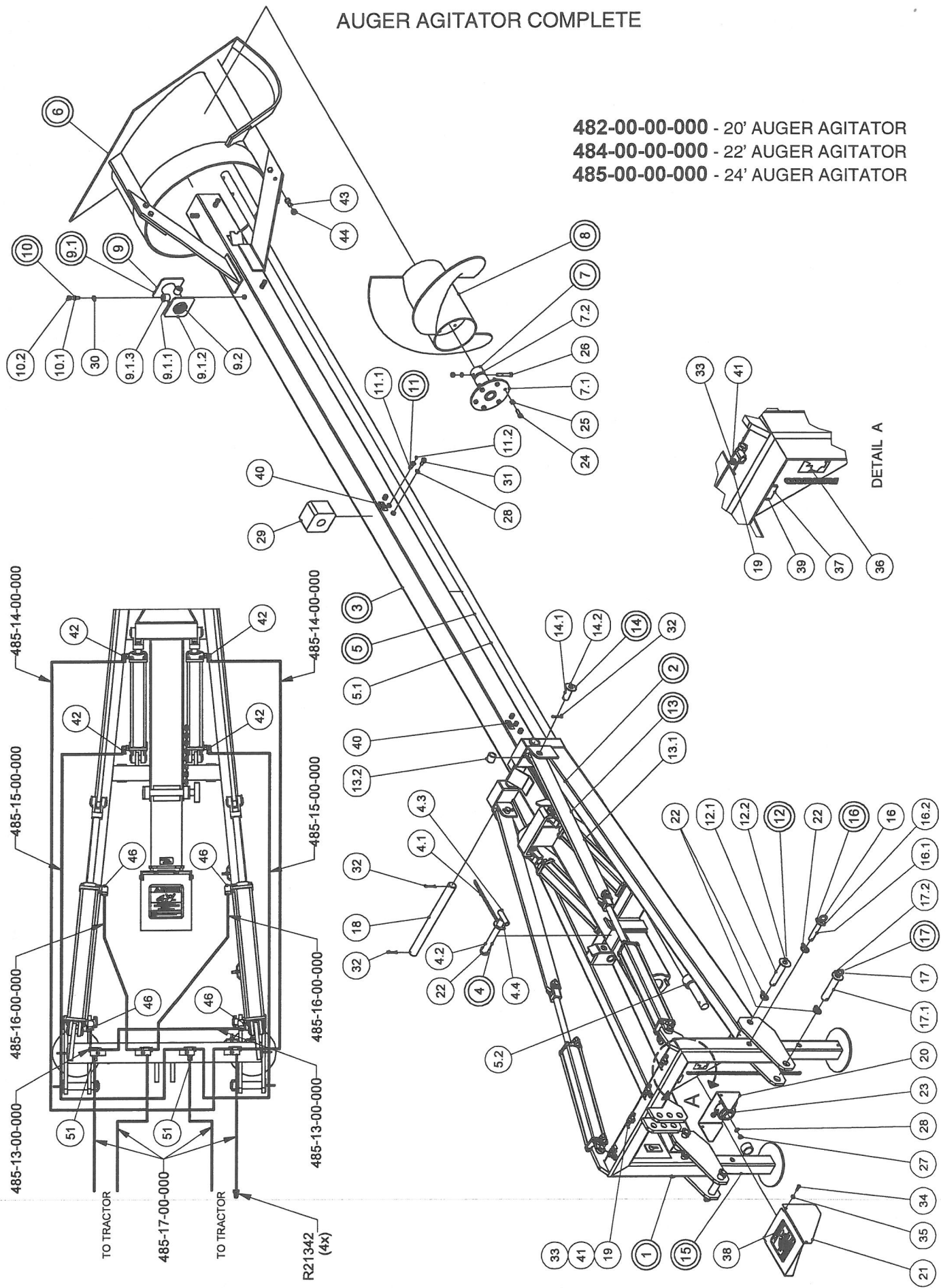
OPERATING INSTRUCTIONS:

We welcome you as an owner of a Husky Auger Agitator. To ensure this machine reaches its maximum life span and operates at an optimum level, we recommend the following:

1. Do not leave agitator in manure pit – remove agitator from pit – wash off and coat with old oil or diesel fuel.
2. Grease top thrust bearing five to ten shots daily.
3. Grease the wood bearings five shots daily.
4. Grease the PTO knuckles daily and oil the slide tube.
5. Make sure when in use that the PTO knuckles are both taking equal amount of bend otherwise propeller might vibrate.
6. EXTREME DANGER – Never enter a dirty manure spreader or storage tank – one breath of hydrogen sulphide gas is enough to kill. Have a ladder in your pit, so that if by accident you should fall in, you can get out.

AUGER AGITATOR COMPLETE

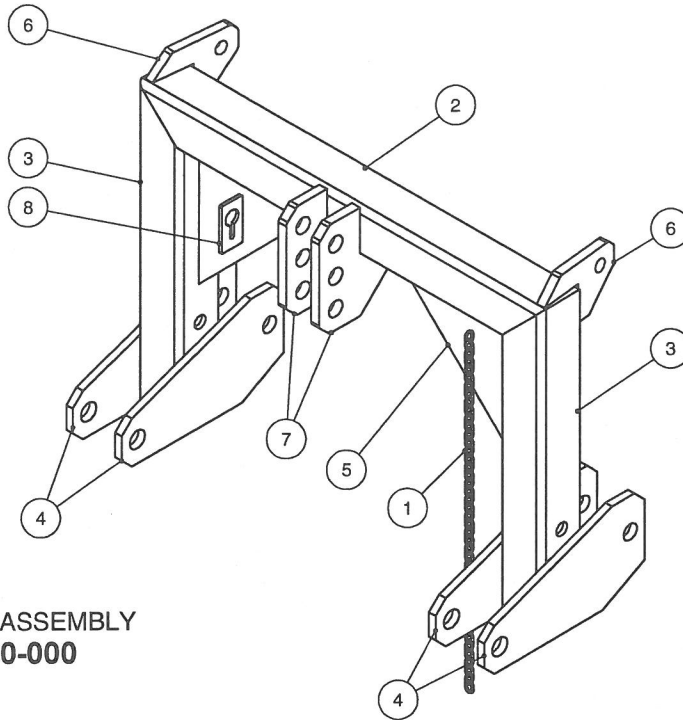
- 482-00-00-000 - 20' AUGER AGITATOR
- 484-00-00-000 - 22' AUGER AGITATOR
- 485-00-00-000 - 24' AUGER AGITATOR



AUGER AGITATOR COMPLETE

PARTS LIST				PARTS LIST			
ITEM	PART NUMBER	DESCRIPTION	QTY	ITEM	PART NUMBER	DESCRIPTION	QTY
1	485-01-00-000	HITCH FRAME ASSY	1	15	480-06-00-000	STAND ASSY	2
2	485-02-00-000	CARRIAGE FRAME ASSY	1	17.1	250-00-00-354	1/4 X 1 1/2" RING	1
3	485-08-00-000	24' DRIVE SHAFT TUBE ASSY	1	16.1	480-15-00-068	LEG PIN	1
	484-02-00-000	22' DRIVE SHAFT TUBE ASSY	1	16.2	R07827	3/4" FLAT WASHER	1
	482-02-00-000	20' DRIVE SHAFT TUBE ASSY	1	16	480-15-00-000	LEG PIN ASSY	2
4	485-02-01-000	LOCK PIN & CHAIN ASSY	1	16.3	250-00-00-354	1/4 X 1 1/2" RING	1
4.1	485-02-01-016	LOCK PIN CHAIN	1	17.2	480-13-00-067	HITCH PIN	1
4.2	485-02-01-015	LOCK PIN	1	17.3	R07828	1" FLAT WASHER	1
4.3	485-02-01-017	PIN HANDLE	1	17	480-13-00-000	HITCH PIN ASSY	2
4.4	R07830	1 1/4" FLAT WASHER	1	18	485-00-00-021	PIVOT PIN	1
5	485-07-00-000	24' DRIVE SHAFT ASSY	1	19	290-00-00-167	HYDRAULIC HOSE CLIP	9
	484-01-00-000	22' DRIVE SHAFT ASSY	1	20	485-00-00-047	PTO GUARD BRKT	1
	482-01-00-000	20' DRIVE SHAFT ASSY	1	21	296-00-00-033	PTO GUARD	1
5.1	485-07-00-034	DRIVE SHAFT - 24ft PROP	1	22	R08040	2 - 18 LYNCH PIN	7
	484-01-00-001	DRIVE SHAFT - 22ft PROP	1	23	R20206	1 3/4" THRUST BEARING	1
	482-01-00-001	DRIVE SHAFT - 20ft PROP	1	24	R07638	1/2 x 1 1/2 HEX BOLT	6
5.2	280-05-00-031	THRUST BEARING BLOCK	1	25	R08219	1/2" NYLOCK NUT	6
6	485-06-00-000	SHROUD ASSY	1	26	R07642	1/2 x 3 1/2 HEX BOLT	2
7	485-04-00-000	AUGER HUB ASSY	1	27	R07785	1/2 HEX NUT	6
7.1	485-04-00-023	HUB FLANGE	1	28	R07805	1/2 LOCK WASHER	11
7.2	485-04-00-022	AUGER HUB	1	29	R20235	5.58" SQ WOOD BEARING	2
8	485-05-00-000	AUGER ASSY	1	30	R08046	1/2 - 13 JAM NUT	4
9	242-22-00-000	1 3/4" MARINE BEARING COMPLETE	2	31	R07674	1/2 x 1 1/4 HEX BOLT	4
9.1	242-22-27-000	MARINE BEARING HOLDER ASSY	1	32	R08016	1/4 x 2 COTTER PIN	4
9.1.1	250-76-34-180	URETHANE BRG SLEEVE	1	33	R08302	3/8-16 UNC x 1 5/8" WELD STUD	9
9.1.2	242-22-27-235	BEARING HOLDING PLATE	2	34	R07619	3/8 x 1 HEX BOLT	2
9.1.3	242-22-27-236	SET SCREW SLEEVE	2	35	R07886	3/8 - 2 WAY LOCK NUT	2
9.2	R20280	URETHANE	1	36	R09509	"MADE IN CANADA" DECAL - LARGE	1
10	250-59-00-000	SET SCREW ASSY	4	37	R09071	SERIAL NUMBER PLATE	1
10.1	250-59-00-141	SS SET SCREW REDDI ROD	1	38	R09785	"DANGER ROTATING DRIVELINE" DECAL	1
10.2	R08235	1/2 S.S. HEX NUT	1				
11	244-88-00-000	WOOD BEARING GREASE BOLT KIT	2	39	R08152	6 x 1/4 PAN HD SOCKET SCREW	2
11.1	244-88-00-451	WOOD BEARING GREASE BOLT	1	40	R09582	GREASE SYMBOL DECAL	3
11.2	R08183	1/4" - 28 STRAIGHT GREASE FITTING	1	41	R07794	3/8 FLANGE NUT	9
12	480-08-00-000	PIVOT PIN ASSY	2	42	R21328	3/8 NPT x 90 DEG SW. ADAPTER	4
12.1	480-08-00-048	PIVOT PIN	1	43	R07647	5/8 x 2" HEX BOLT	6
12.2	R07828	1" FLAT WASHER	1	44	R07887	5/8 HEX NUT	6
13	485-03-00-000	CYLINDER BAR ASSY	2	45	R02043	BUSHING 1/2 x 3/8	4
13.1	485-03-00-019	CYLINDER BAR	1	46	R21367	1/2 X 90 HYD ELBOW	4
13.2	485-03-00-020	CYLINDER BAR BUSHING	1	47	R22531	3 x 24 HYDRAULIC CYLINDER	2
14	485-10-00-000	LIFT BAR PIN ASSY	2	48	R22534	2 1/2 x 16 HYDRAULIC CYLINDER	2
14.1	485-10-00-054	LIFT BAR PIN	1	49	280-00-00-052	SPACER PIPE	1
14.2	R07828	1" FLAT WASHER	1	50	R21395	3/8 NPT S.W. FEMALE TEE	4
				51	R21336	3/8 - 18 RESTRICTOR	2

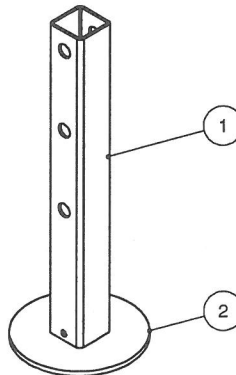
HITCH FRAME ASSY



**HITCH FRAME ASSEMBLY
485-01-00-000**

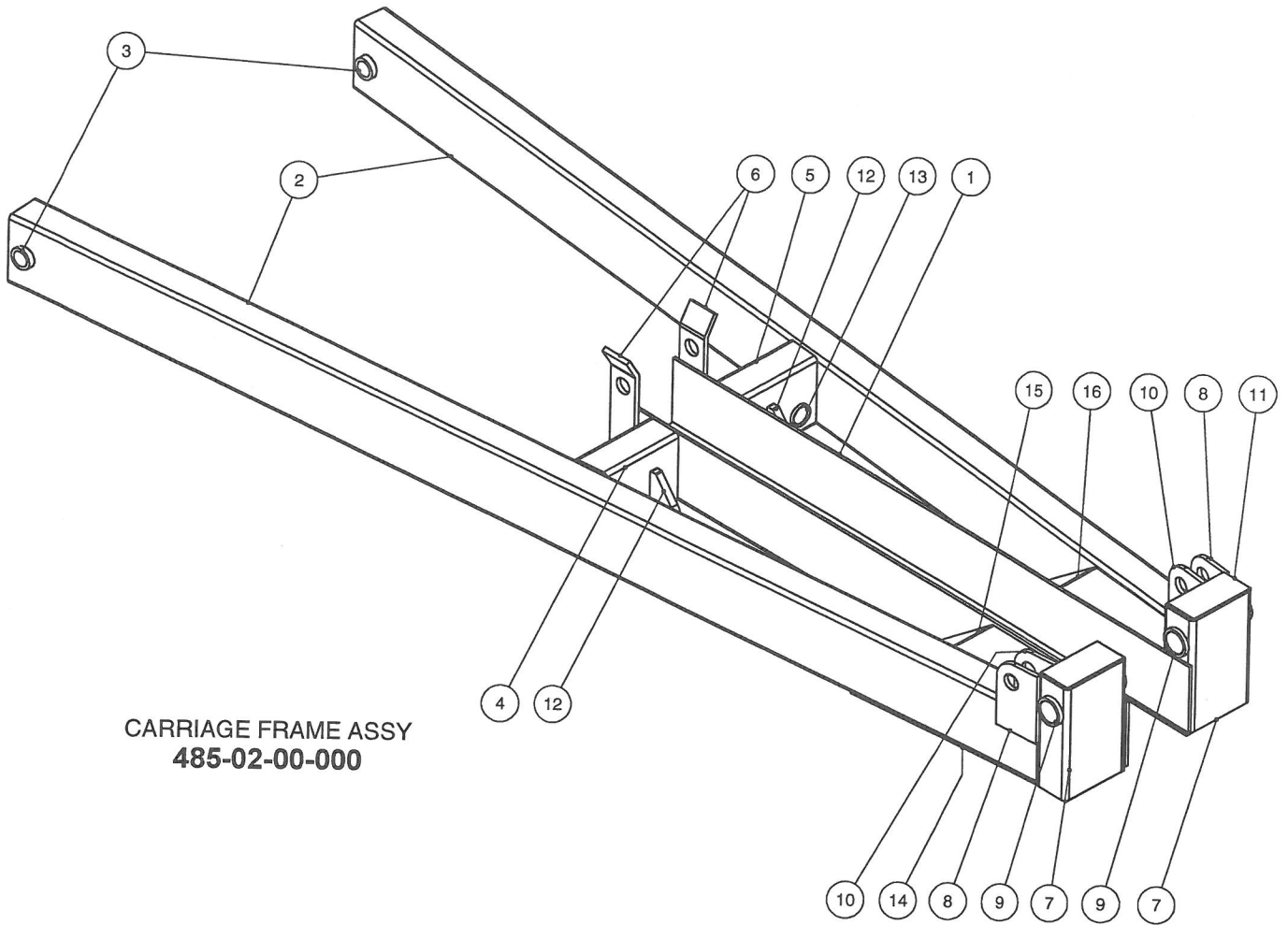
PARTS LIST			
ITEM	PART NUMBER	DESCRIPTION	QTY
1	480-01-00-044	PTO RETAINING CHAIN	1
2	480-01-00-002	HITCH FRAME TOP PC	1
3	480-01-00-001	HITCH FRAME SIDE	2
4	480-01-00-005	HITCH PLATE	4
5	480-01-00-004	GUSSET	2
6	480-01-00-009	CYLINDER BRKT	2
7	480-01-00-003	UPPER LINK CONN PLATE	2
8	480-01-00-008	CHAIN BRKT	1

**STAND ASSEMBLY
480-06-00-000
(2 REQ'D)**



PARTS LIST			
ITEM	PART NUMBER	DESCRIPTION	QTY
1	480-06-00-045	STAND LEG	1
2	480-06-00-046	STAND FOOT	1

CARRIAGE FRAME ASSY



**CARRIAGE FRAME ASSY
485-02-00-000**

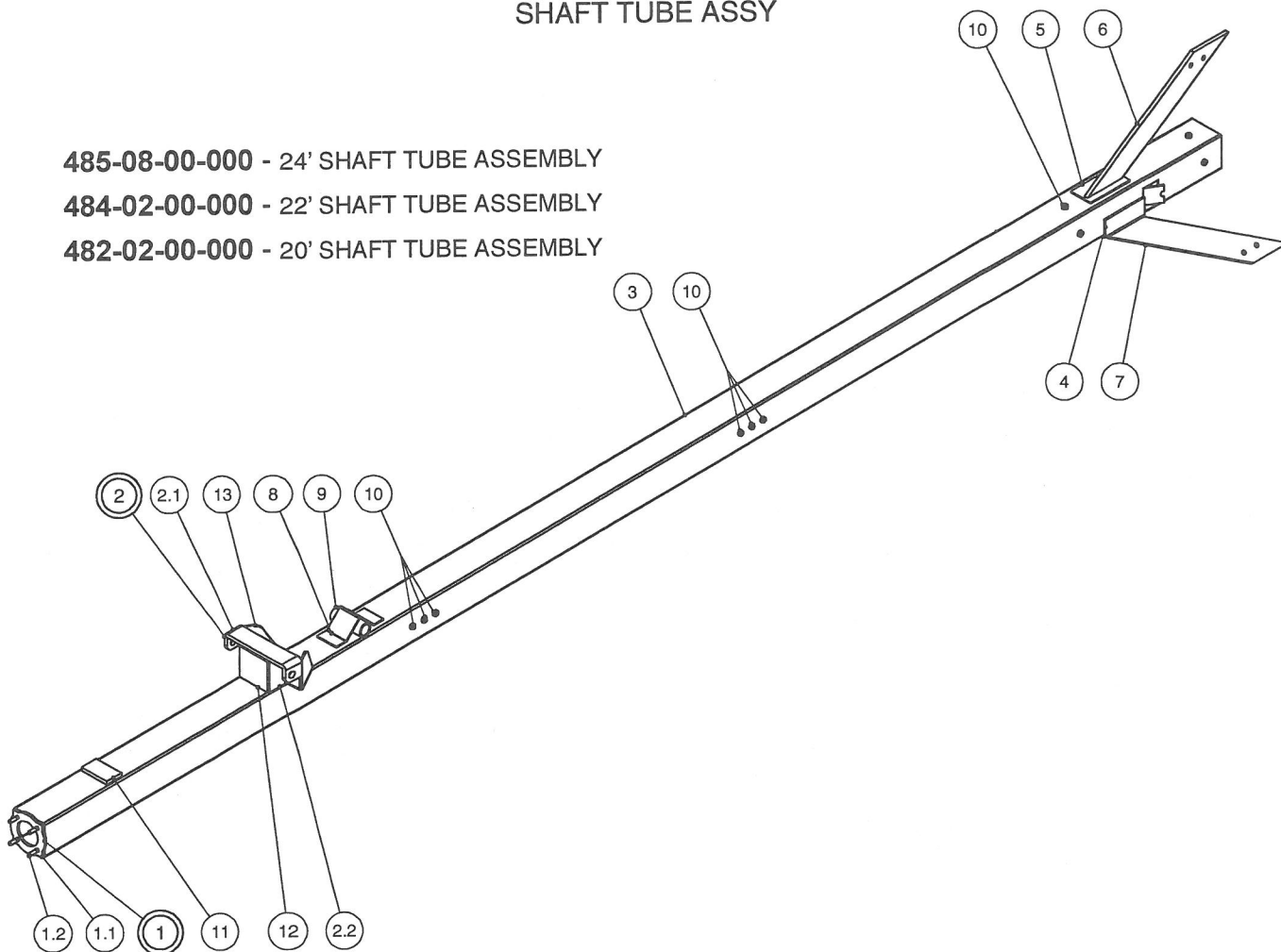
PARTS LIST			
ITEM	PART NUMBER	DESCRIPTION	QTY
1	485-02-00-003	CRADDLE	1
2	485-02-00-001	LIFT ARM	2
3	485-02-00-002	LIFT ARM BUSHING	2
4	485-02-00-055	LH SUPPORT TUBE w/ HOLE	1
5	485-02-00-004	RH SUPPORT TUBE w/ HOLE	1
6	485-02-00-005	HOLD DOWN BRKT	2
7	485-02-00-009	VERTICAL TUBE	2
8	485-02-00-011	OUTER BRKT	2
9	485-02-00-014	VERTICAL TUBE PIN SLEEVE	2
10	485-02-00-048	INSIDE CYL. BRKT	2
11	485-02-00-049	CAP	2
12	485-02-00-013	CYLINDER LUG	2
13	485-02-00-056	HOSE TUBE	2
14	485-02-00-007	LOWER GUSSET	1
15	485-02-00-006	UPPER GUSSET - LEFT	1
16	485-02-00-057	UPPER GUSSET - RIGHT	1

SHAFT TUBE ASSY

485-08-00-000 - 24' SHAFT TUBE ASSEMBLY

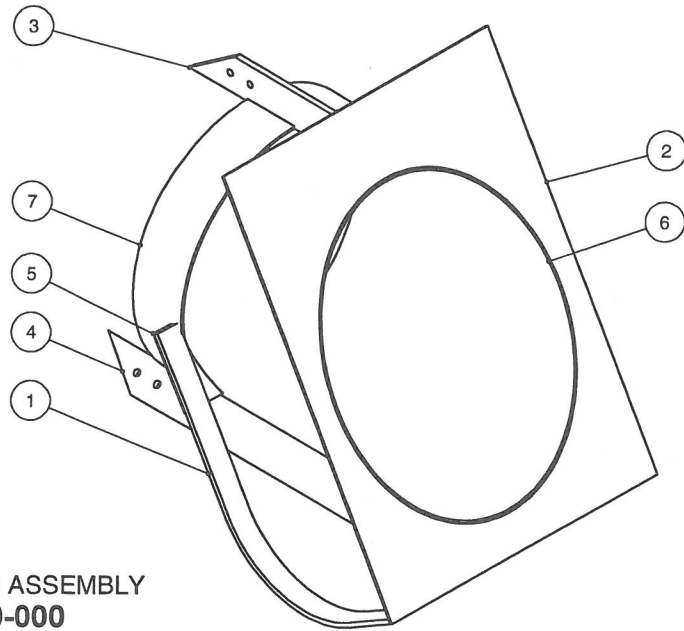
484-02-00-000 - 22' SHAFT TUBE ASSEMBLY

482-02-00-000 - 20' SHAFT TUBE ASSEMBLY



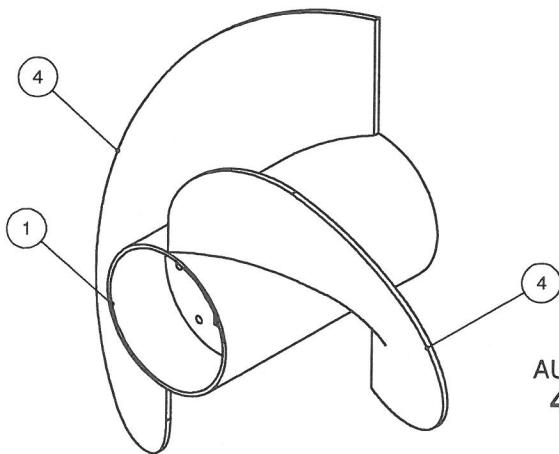
PARTS LIST			
ITEM	PART NUMBER	DESCRIPTION	QTY
1	485-08-03-000	BEARING FLANGE ASSY	1
1.1	480-03-00-012	BEARING FLANGE	1
1.2	R07639	1/2 x 2 HEX BOLT	4
2	485-08-02-000	CYL BRACKET ASSY	1
2.1	485-08-02-050	CYLINDER U-BRKT	1
2.2	485-08-02-051	U - BRACKET LEG	2
3	485-08-00-035	24' DRIVE SHAFT TUBE	1
	484-02-00-002	22' DRIVE SHAFT TUBE	1
	482-02-00-002	20' DRIVE SHAFT TUBE	1
4	485-08-00-043	BRACE REINFORCING BRKT	1
5	485-08-00-038	TOP BRACE PLATE	1
6	485-08-00-037	TOP BRACE	1
7	485-08-00-039	SIDE BRACE	2
8	485-08-00-041	PIVOT SLEEVE REINF PLATE	1
9	485-08-00-036	PIVOT SLEEVE	1
10	R08304	1/2 S.S. FLANGE NUT	10
11	485-08-00-040	SPACER PLATE	1
12	485-08-00-053	CYL BRKT CAP	1
13	485-08-00-052	CYL BRKT GUSSET	1

HOUSING & AUGER ASSY

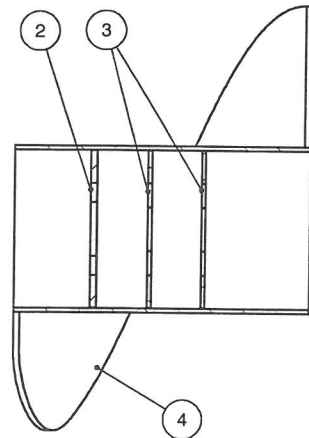


**AUGER HOUSING ASSEMBLY
485-06-00-000**

PARTS LIST			
ITEM	PART NUMBER	DESCRIPTION	QTY
1	485-06-00-030	SHROUD RUNNER	2
2	485-06-00-029	SHROUD WALL PLATE	1
3	485-06-00-031	SHROUD TOP BRACE	1
4	485-06-00-032	SHROUD SIDE BRACE	2
5	485-06-00-033	RUNNER SUPPORT	2
6	485-06-00-028	AUGER SHROUD	1
7	485-06-00-059	SHROUD REINFORCING RING	1

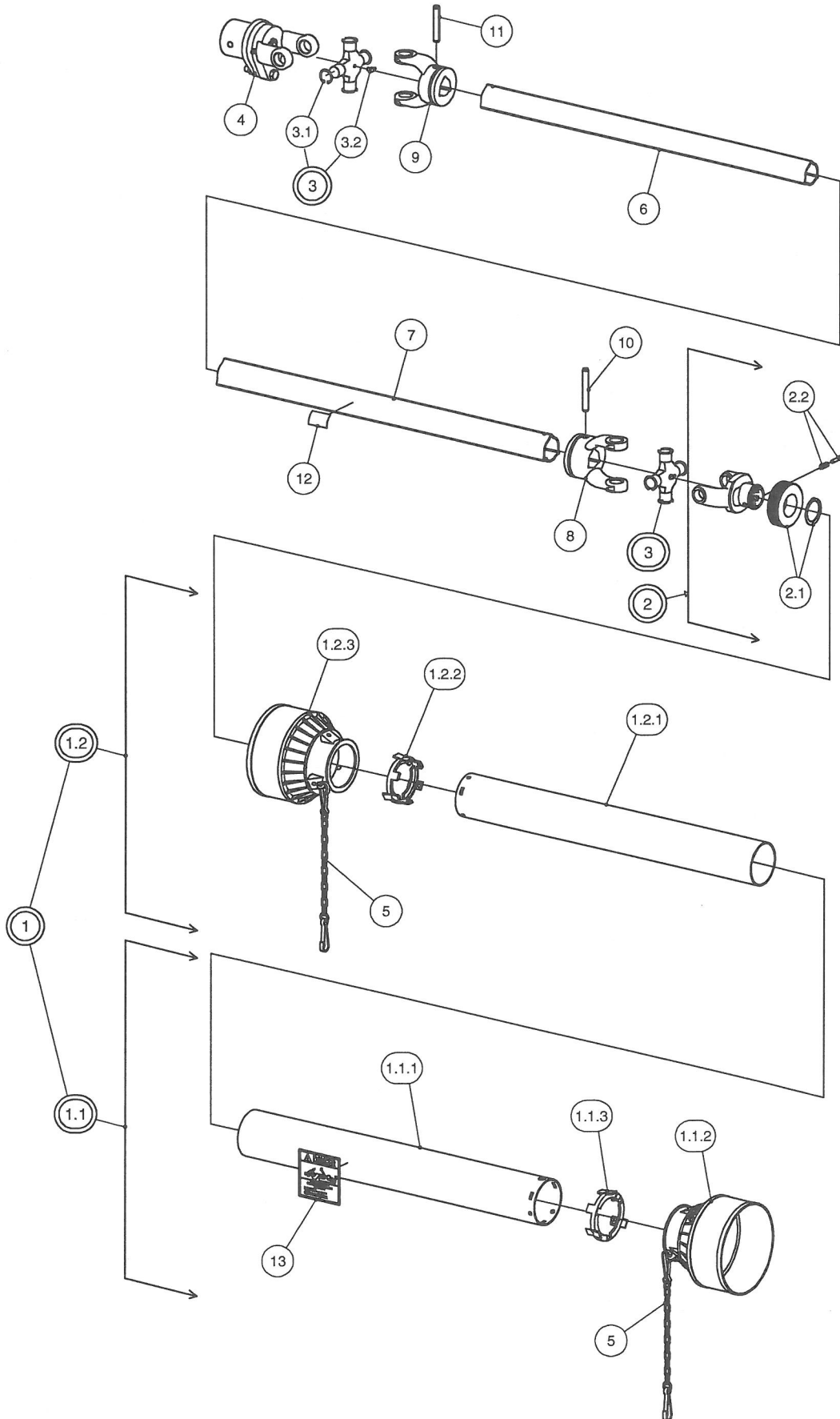


**AUGER ASSEMBLY
485-05-00-000**



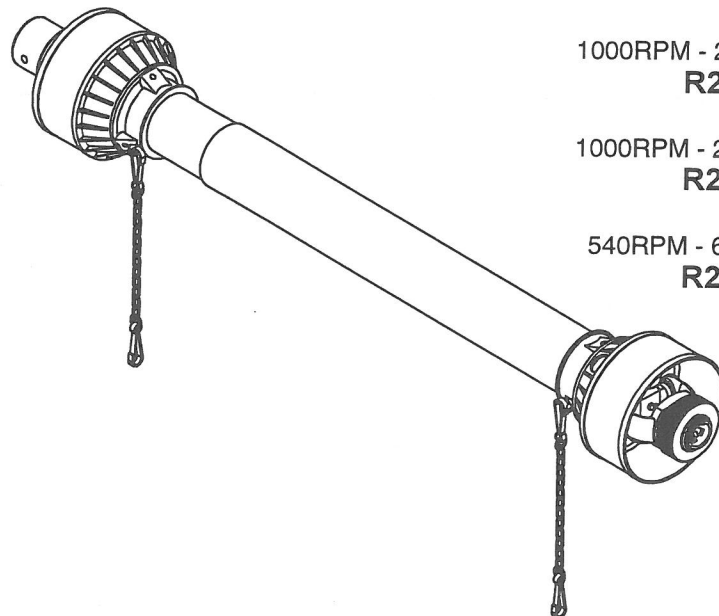
PARTS LIST			
ITEM	PART NUMBER	DESCRIPTION	QTY
1	485-05-00-024	AUGER TUBE	1
2	485-05-00-025	END FLANGE	1
3	485-05-00-026	MIDDLE FLANGE	2
4	485-05-00-027	AUGER FLITE	2

BONDIOLI & PAVESI PTO
w/ 1 3/4" SHEAR YOKE



**BONDIOLI & PAVESI PTO
w/ 1 3/4" SHEAR YOKE**

PARTS LIST				
ITEM	MFG #	PART NUMBER	DESCRIPTION	QTY
1	5F08101FFFX	R21629	SAFETY GUARD COMPLETE	1
1.1	5FE8101FFFX	R21627	HALF SAFETY GUARD - OUTER	1
1.1.1	236850732	R21618	CM SAFETY TUBE	1
1.1.2	517080130	R21610	OUTER CONE SETS N8-9	1
1.1.3	255080005R02	R21609	I. BEARING 3-4	1
1.2	5F18101FFFX	R21628	HALF SAFETY GUARD - INNER	1
1.2.1	236840732	R21617	CM SAFETY TUBE	1
1.2.2	255080006R02	R21608	I. BEARING 3-4	1
1.2.3	517080120	R21611	INNER CONE SETS N8-9	1
2	572083851	R21644	1 3/8 - 20 TOOTH QD YOKE w/ SLEEVES	1
2	572080351	R21641	1 3/8 - 6 TOOTH QD YOKE w/ SLEEVES	1
2	572083751	R21640	1 3/8 - 21 TOOTH QD YOKE w/ SLEEVES	1
2.1	240003551	R21713	R.S. COLLAR KIT	1
2.2	403000001R10	R21669	COMPLETE PUSH BUTTON	1
3	41208	R21614	CROSS JOURNAL ASSY	2
3.1	338023000	R21621	CIRCLIP	4
3.2	348004000	R21655	GREASE NIPPLE 45 DEG	1
4	606598802R	R21648	1 3/4" RD HOLE SHEAR YOKE	1
5	252000005R02	R21738	SHIELD TIE CHAIN	2
6	225690803	R21615	CARDAN TUBE - INNER	1
7	225730803	R21616	CARDAN TUBE - OUTER	1
8	204086860	R21620	OUTER TUBE YOKE	1
9	204086861	R21619	INNER TUBE YOKE	1
10	341051000	R21613	FLEXIBLE PIN	1
11	34105500R10	R21612	FLEXIBLE PIN	1
12		R21523	"SHIELD MISSING" DECAL	1
13		R21521	"ROTATING DRIVE LINE" DECAL	1



1000RPM - 21 TOOTH PTO
R22201

1000RPM - 20 TOOTH PTO
R22202

540RPM - 6 TOOTH PTO
R22200

GUARANTEE

All Husky Farm Equipment manufactured by Husky Farm Equipment Limited is guaranteed. Guarantee covers all the replacement cost or repair of all parts said to be defective from manufacture. Guarantee also covers labour installing said parts, if installed at Husky Manufacturing plant. Time and use is the essence of the guarantee. If equipment is used on a private property for an individual's use, guarantee will be in effect for twelve months from date of invoice. If equipment is used for commercial use to do custom work for money then guarantee will be in effect for three months only from date of invoice.

EXEMPTIONS FROM GUARANTEE

Cost of transportation of equipment to or from Husky Farm Equipment Limited either by customer or by Husky's service staff or cost of mail or public transportation is not covered. Tires and electric or hydraulic motors are covered by manufacturer's warranty and although Husky may assist to get warranty, Husky will not be responsible other than that allowed by manufacturer's warranty. Items subject to normal wear from use not covered by guarantee if faulty part is simply worn.