

Office Copy
April 1, 2003

Apr 21/03 - 23 made
June 3 - 7 "
Aug 26 - 8 "
Oct 3 - 5 "
Nov 4 - 7 "
Dec 29 - 3 "
Jan 30/04 - 7 "

Date Purchased _____ Machine Serial No. _____

Size of Pump _____ Options _____

PLEASE NOTE:

The key number system in this parts book is arranged as follows:

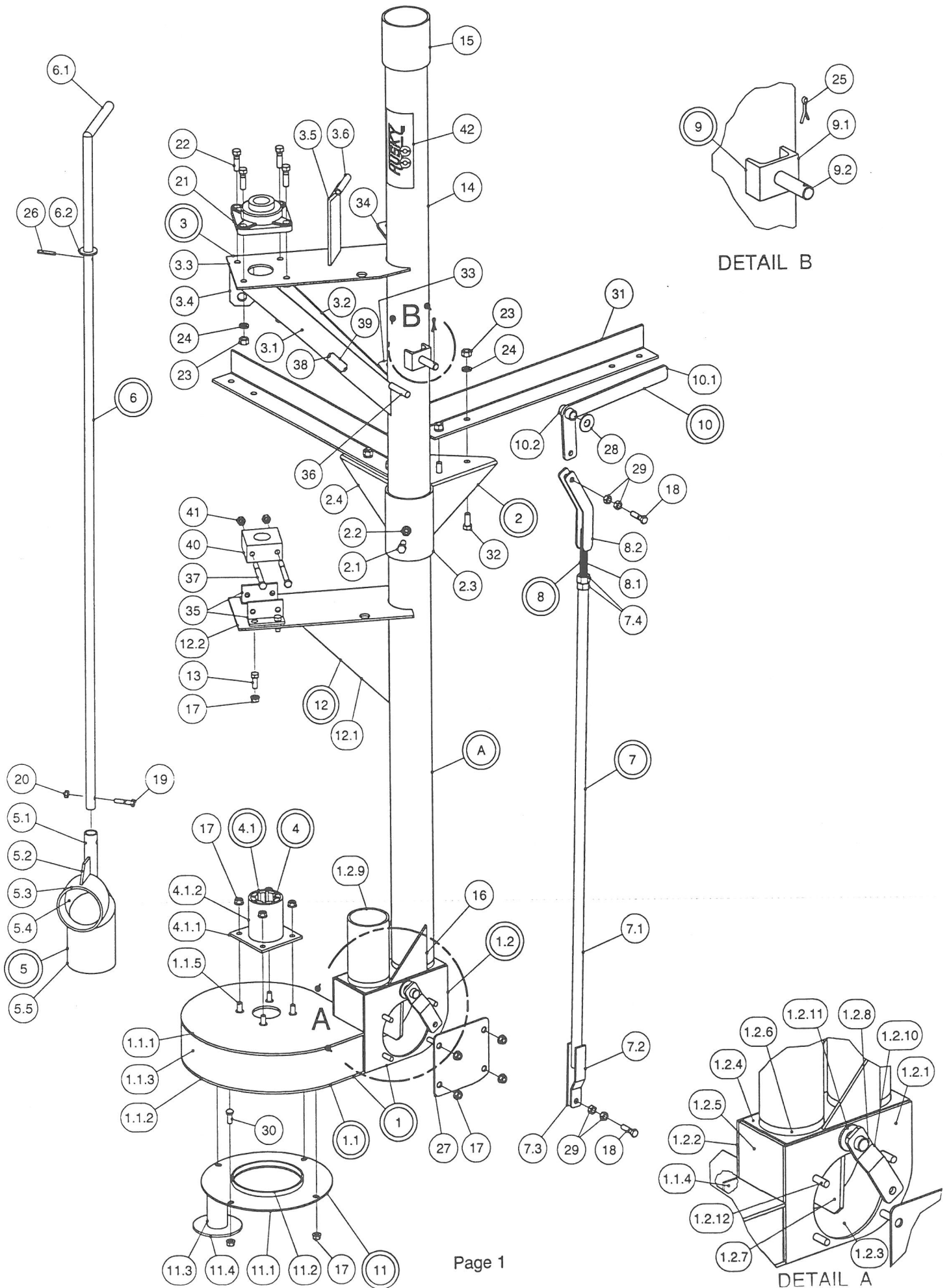
- ⊙ -- Key numbers with two circles denotes main assemblies.
- -- Key numbers with one circle are individual parts.

Please order parts by number

3" ELECTRIC
HUSKY LIQUID MANURE PUMP

OPERATING INSTRUCTIONS:

1. Pump must turn counter-clockwise when looking down from top.
2. Fasten pump solid so it will not move when operating.
3. Make sure all moving parts are shielded.
4. Keep children and livestock away from pump.
5. Have an Electrician check amp draw when operating to make sure the motor has enough electricity.
6. Check bottom bearing for wear occasionally.
7. Keep belts snug but not overly tight.
8. EXTREME DANGER - Never enter a dirty manure spreader or storage tank - one breath of hydrogen sulphide gas is enough to kill.



MAIN FRAME

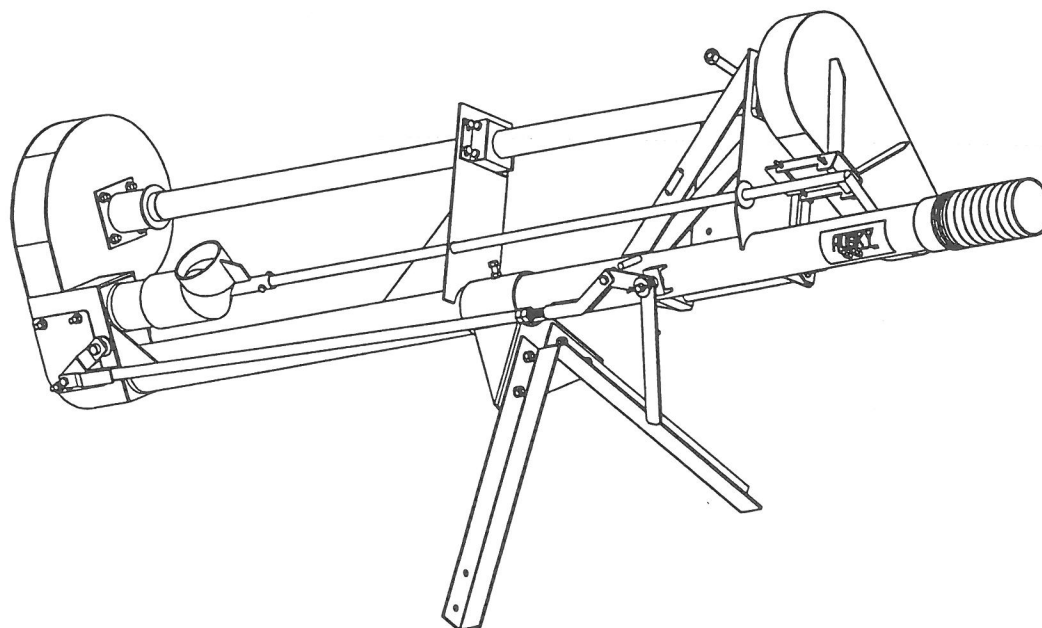
ITEM	PART NUMBER	DESCRIPTION	QTY
A	230-01-00-000	PUMP HOUSING & STANDPIPE ASSY - 4 FT	1
	232-01-00-000	PUMP HOUSING & STANDPIPE ASSY - 5 FT	1
	234-01-00-000	PUMP HOUSING & STANDPIPE ASSY - 6 FT	1
	236-01-00-000	PUMP HOUSING & STANDPIPE ASSY - 8 FT	1
	238-01-00-000	PUMP HOUSING & STANDPIPE ASSY - 10 FT	1
	239-01-00-000	PUMP HOUSING & STANDPIPE ASSY - 12 FT	1
1	230-32-00-000	CHANGE BOX & HOUSING ASSY	1
1.1	230-34-00-000	FAN HOUSING ASSY	1
1.1.1	230-34-00-130	FAN HOUSING TOP PLATE	1
1.1.2	230-22-00-106	FAN HOUSING BOTTOM PLATE	1
1.1.3	230-01-01-003	HOUSING BAND	1
1.1.4	230-22-00-107	FILLER PLATE	1
1.1.5	R08244	3/8 x 3/4 FLAT SLOT S.S. MACHINE SCREW	4
1.2	230-01-02-000	CHANGE BOX ASSY	1
1.2.1	230-01-02-006	INSPECTION SIDE PLATE	1
1.2.2	230-01-02-007	SIDE PLATE	1
1.2.3	230-01-02-008	CHANGE BOX BAND	1
1.2.4	230-01-02-009	TOP PLATE	1
1.2.5	230-01-02-010	END PLATE	1
1.2.6	230-01-02-011	FLAPPER SEAT	2
1.2.7	230-01-02-012	FLAPPER	1
1.2.8	230-01-02-013	FLAPPER SHAFT	1
1.2.9	230-01-02-118	FLAPPER SEAT EXTENSION	1
1.2.10	230-01-02-005	FLAPPER ARM	1
1.2.11	R07827	3/4" FLAT WASHER	2
1.2.12	R08312	3/8 x 1 WELD STUD	4
2	230-11-00-000	FLOOR BRKT ASSY	1
2.1	R07628	7/16 x 1 HEX BOLT	1
2.2	R07879	7/16 FLANGE NUT	1
2.3	230-11-00-072	SLIDE TUBE	1
2.4	230-11-00-140	FLOOR BRKT BASE	1
3	230-01-04-000	UPPER BRG PLATE ASSY	1
3.1	230-01-04-023	RH BRG PLATE BRACE	1
3.2	230-01-04-025	LH BRG PLATE BRACE	1
3.3	230-01-04-022	BEARING PLATE	1
3.4	230-01-04-024	TENSION ROD BRKT	1
3.5	230-01-04-026	GUARD HINGE PLATE	1
3.6	230-01-04-027	GUARD SLEEVE	1
4	230-33-00-000	BEARING & HOLDER ASSY	1
4.1	230-33-09-000	BEARING HOLDER ASSY	1
4.1.1	230-33-09-128	BEARING HOLDER BACK PLATE	1
4.1.2	230-33-09-129	BRG HOLDER	1
5	230-24-00-000	AGITATING ELBOW ASSY	1
5.1	230-01-03-020	TURN SOCKET	1
5.2	230-01-03-021	TURN SOCKET GUSSET	1
5.3	230-01-03-017	AGITATING ELBOW TOP	1
5.4	230-01-03-018	AGITATING ELBOW CENTER PIECE	1
5.5	230-24-00-117	AGITATING ELBOW BASE	1

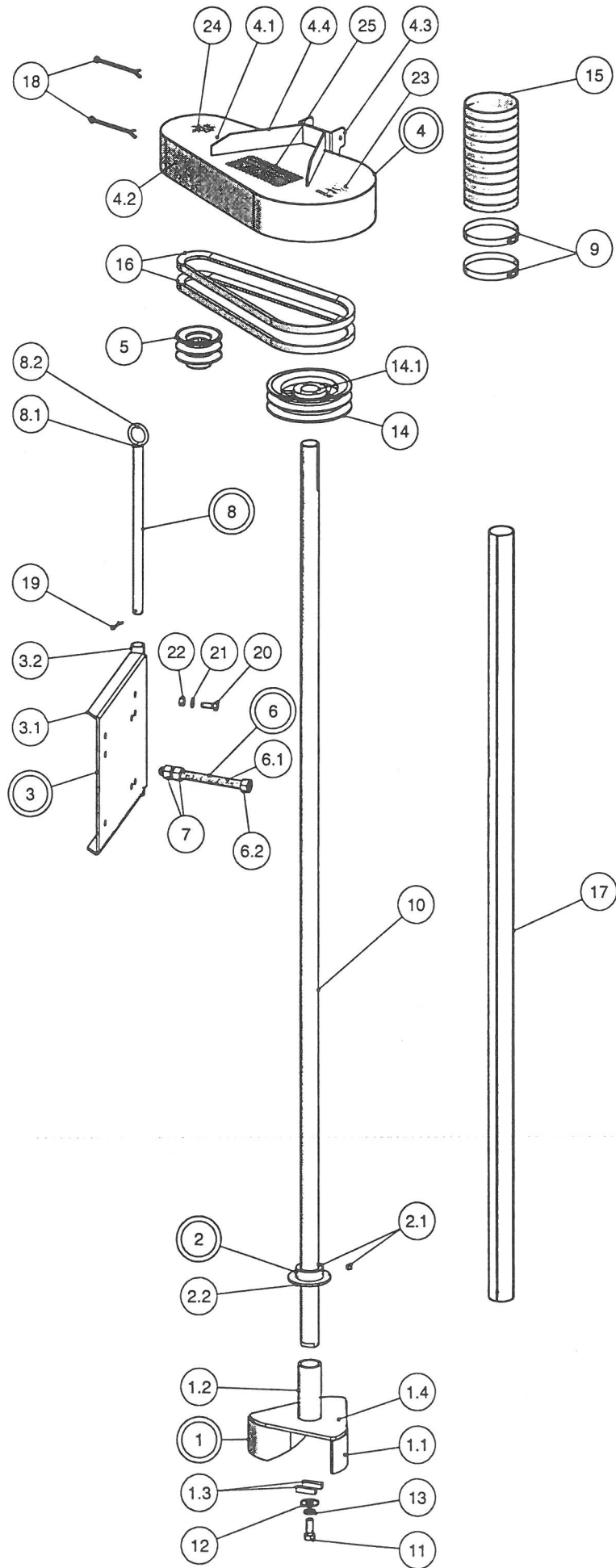
MAIN FRAME

6	230-25-00-000	AGITATOR TURN LEVER ASSY - 4 FT MODEL	1
	232-26-00-000	AGITATOR TURN LEVER ASSY - 5 FT MODEL	1
	234-27-00-000	AGITATOR TURN LEVER ASSY - 6 FT MODEL	1
	236-28-00-000	AGITATOR TURN LEVER ASSY - 8 FT MODEL	1
	238-29-00-000	AGITATOR TURN LEVER ASSY - 10 FT MODEL	1
	239-30-00-000	AGITATOR TURN LEVER ASSY - 12 FT MODEL	1
6.1	230-25-00-119	AGITATOR TURN LEVER - 4 FT MODEL	1
	232-26-00-120	AGITATOR TURN LEVER - 5 FT MODEL	1
	234-27-00-121	AGITATOR TURN LEVER - 6 FT MODEL	1
	236-28-00-122	AGITATOR TURN LEVER - 8 FT MODEL	1
	238-29-00-123	AGITATOR TURN LEVER - 10 FT MODEL	1
	239-30-00-124	AGITATOR TURN LEVER - 12 FT MODEL	1
6.2	R07827	3/4" FLAT WASHER	1
7	230-05-00-000	CONTROL ROD ASSY - 4 FT MODEL	1
	232-05-00-000	CONTROL ROD ASSY - 5 FT MODEL	1
	234-05-00-000	CONTROL ROD ASSY - 6 FT MODEL	1
	236-05-00-000	CONTROL ROD ASSY - 8 FT MODEL	1
	238-05-00-000	CONTROL ROD ASSY - 10 FT MODEL	1
	239-05-00-000	CONTROL ROD ASSY - 12 FT MODEL	1
7.1	230-05-00-050	CONTROL PIPE - 4 FT MODEL	1
	232-05-00-051	CONTROL PIPE - 5 FT MODEL	1
	234-05-00-052	CONTROL PIPE - 6 FT MODEL	1
	236-05-00-053	CONTROL PIPE - 8 FT MODEL	1
	238-05-00-054	CONTROL PIPE - 10 FT MODEL	1
	239-05-00-055	CONTROL PIPE - 12 FT MODEL	1
7.2	230-05-00-056	CONTROL ROD BRKT	1
7.3	230-05-00-057	CONTROL ROD BAR	1
7.4	R07786	5/8 HEX NUT	2
8	230-13-00-000	OVER CENTER ARM ASSY	1
8.1	230-13-00-076	ADJUSTING ROD	1
8.2	230-13-00-075	OVER CENTER ARM	2
9	230-01-07-000	PIVOT PIN ASSY	1
9.1	230-01-07-031	PIVOT PIN BRKT	1
9.2	230-01-07-030	PIVOT PIN	1
10	230-04-00-000	AGITATOR HANDLE ASSY	1
10.1	230-04-00-131	HANDLE	1
10.2	230-04-00-047	HANDLE PIVOT	1
11	230-21-00-000	COVER PLATE ASSY	1
11.1	230-21-00-104	HOUSING COVER PLATE	1
11.2	230-21-00-105	INLET RING	1
11.3	230-06-00-059	FOOT SPACER	1
11.4	230-06-00-060	FOOT	1
12	234-01-08-000	INTERMEDIATE BRG PLATE ASSY (USED ON 6 FT & OVER MODELS)	1 or 2
12.1	234-01-08-116	INTERMEDIATE BRG GUSSET	1
12.2	234-01-08-041	INTERMEDIATE BRG PLATE	1
13	R07619	3/8 x 1 HEX BOLT	4
14	230-01-00-033	STANDPIPE - 4 FT MODEL	1
	232-01-00-034	STANDPIPE - 5 FT MODEL	1
	234-01-00-035	STANDPIPE - 6 FT MODEL	1
	236-01-00-036	STANDPIPE - 8 FT MODEL	1

MAIN FRAME

ITEM	PART NUMBER	DESCRIPTION	QTY
	238-01-00-037	STANDPIPE - 10 FT MODEL	1
	239-01-00-038	STANDPIPE - 12 FT MODEL	1
15	230-12-00-074	ADAPTER PIPE	1
16	230-01-00-040	STANDPIPE GUSSET	2
17	R07794	3/8 FLANGE NUT	16
18	R07620	3/8 x 1 1/2 HEX BOLT	2
19	R07612	5/16 x 1 1/2 HEX BOLT	1
20	R07782	5/16 HEX NUT	1
21	R20185	1 3/8 FLANGE BRG	1
22	R07629	7/16 x 1 1/2 HEX BOLT	4
23	R07784	7/16 HEX NUT	8
24	R07804	7/16 LOCK WASHER	8
25	R08021	1/8 x 1 S.S. COTTER PIN	1
26	R07962	1/4 x 1 1/2 ROLL PIN	1
27	230-00-00-084	INSPECTION PLATE	1
28	R07852	9/16 FLAT WASHER	1
29	R07783	3/8 HEX NUT	4
30	R07721	3/8 x 1 CARRIAGE BOLT	4
31	230-00-00-077	FLOOR BRKT LEGS	2
32	R07628	7/16 x 1 HEX BOLT	4
33	230-01-00-139	LOWER MOTOR MOUNT ASSY	1
34	230-01-00-138	UPPER MOTOR MOUNT ASSY	1
35	234-00-00-144	BRG HOLDER	2
36	230-01-00-039	STOP ROD	1
37	R07625	3/8 x 4 HEX BOLT	2
38	R09071	SERIAL NUMBER PLATE	1
39	R08152	PAN HEAD SOC. SCREW #6 x 1/4"	2
40	R20229	1 3/8 WOOD BRG	1
41	R08247	3/8 NYLOCK NUT	2
42	R09671	"HUSKY" DECAL	1



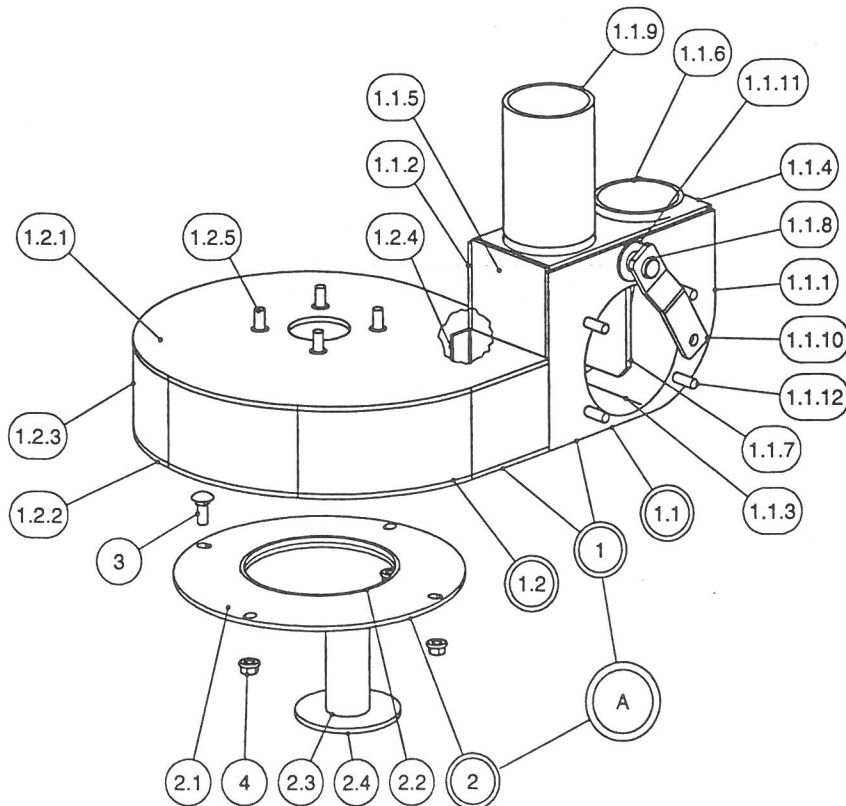


IMPELLER & SHAFT

<u>ITEM</u>	<u>PART NUMBER</u>	<u>DESCRIPTION</u>	<u>QTY</u>
1	230-31-00-000	IMPELLER ASSY - CHT	1
1.1	230-31-00-126	IMPELLER BLADE - CHT	3
1.2	230-31-00-099	SHAFT SLEEVE	1
1.3	230-31-00-103	SHAFT SLEEVE PIN	2
1.4	230-31-00-127	IMPELLER BACK PLATE	1
2	230-23-00-000	SPLASH GUARD ASSY	1
2.1	R09554	1 3/8 LOCK COLLAR	1
2.2	R07848	1 3/8 FLAT WASHER	1
3	230-07-00-000	MOTOR MOUNT ASSY	1
3.1	230-07-00-062	MOTOR MOUNT	1
3.2	230-07-00-061	MOTOR MOUNT SLEEVE	1
4	230-10-00-000	BELT GUARD ASSY	1
4.1	230-10-00-066	GUARD TOP	1
4.2	230-10-00-068	GUARD BAND	1
4.3	230-10-00-141	GUARD SUPPORT CHANNEL	1
4.4	230-10-00-142	GUARD BRACE	1
5	R21064	2 HB x 3.5 x 1 1/8 BORE PULLEY	1
6	230-09-00-000	TENSION ROD ASSY	1
6.1	230-09-00-065	TENSION ROD	1
6.2	R07786	5/8 HEX NUT	1
7	R07786	5/8 HEX NUT	2
8	230-08-00-000	MOTOR MOUNT PIN ASSY	1
8.1	230-08-00-064	MOTOR MOUNT PIN	1
8.2	R07925	1/4 x 1 1/2 DIA. RING	1
9	R02237	H-5 72 GEAR CLAMP 4 1/2"	2
10	230-00-00-109	DRIVE SHAFT - 4 FT MODEL	1
	232-00-00-110	DRIVE SHAFT - 5 FT MODEL	1
	234-00-00-111	DRIVE SHAFT - 6 FT MODEL	1
	236-00-00-112	DRIVE SHAFT - 8 FT MODEL	1
	238-00-00-113	DRIVE SHAFT - 10 FT MODEL	1
	239-00-00-114	DRIVE SHAFT - 12 FT MODEL	1
11	R08217	1/2 x 1 1/4 S.S. HEX BOLT	1
12	R07825	1/2" FLAT WASHER	1
13	R07805	1/2" LOCK WASHER	1
14	R21062	2 HB x 6.4 SHEAVE 1 3/8 BORE PULLEY	1
14.1	R21052	PULLEY BUSHING - 1 3/8	1
15	230-00-00-093	4" FLEX HOSE	1
16	R20932	38B - V BELTS	2
17	230-00-00-132	SHAFT GUARD - 4 FT MODEL	1
	232-00-00-133	SHAFT GUARD - 5 FT MODEL	1
	234-00-00-134	SHAFT GUARD - 6 FT MODEL	1
	236-00-00-135	SHAFT GUARD - 8 FT MODEL	1
	238-00-00-136	SHAFT GUARD - 10 FT MODEL	1
	239-00-00-137	SHAFT GUARD - 12 FT MODEL	1
18	R08017	1/4 x 4 COTTER PIN	2
19	R07948	5/32 COTTER PIN	1
20	R07619	3/8 x 1 HEX BOLT	4
21	R07803	3/8 LOCK WASHER	4
22	R07783	3/8 HEX NUT	4
23	R21521	"ROTATING DRIVE LINE" DECAL	1
24	R09509	"MADE IN CANADA" DECAL	1
25	R09692	"CAUTION - ROTATE CCW" DECAL	1

CHT HOUSING & COVERPLATE KIT

ITEM	PART NUMBER	DESCRIPTION	QTY
A	230-35-00-000	CHT HOUSING & COVER PLATE KIT	1
1	230-35-04-000	CHT HOUSING & CHANGE BOX ASSY	1
1.1	230-35-01-000	CHT CHANGE BOX ASSY	1
1.1.1	230-01-02-006	INSPECTION SIDE PLATE	1
1.1.10	230-01-02-005	FLAPPER ARM	1
1.1.11	R07827	3/4" FLAT WASHER	2
1.1.12	R08312	3/8 x 1 WELD STUD	4
1.1.2	230-01-02-007	SIDE PLATE	1
1.1.3	230-35-01-145	CHANGE BOX BAND - CHT	1
1.1.4	230-01-02-009	TOP PLATE	1
1.1.5	230-01-02-010	END PLATE	1
1.1.6	230-01-02-011	FLAPPER SEAT	2
1.1.7	230-35-01-146	FLAPPER	1
1.1.8	230-01-02-013	FLAPPER SHAFT	1
1.1.9	230-01-02-118	FLAPPER SEAT LONG	1
1.2	230-35-02-000	CHT FAN HOUSING ASSY-3"	1
1.2.1	230-35-02-147	FAN HOUSING TOP PLATE - CHT	1
1.2.2	230-35-02-148	FAN HOUSING BOTTOM PLATE - CHT	1
1.2.3	230-35-02-149	HOUSING BAND - CHT	1
1.2.4	230-35-02-150	FILLER PLATE - CHT	1
1.2.5	R08244	3/8 x 3/4 FLAT HEAD SLOT S.S. SCREW	4
2	230-35-03-000	CHT COVER PLATE ASSY	1
2.1	230-35-03-151	CHT COVER PLATE	1
2.2	230-35-03-152	CHT INLET RING	1
2.3	230-06-00-059	FOOT SPACER	1
2.4	230-06-00-060	FOOT	1
3	R07721	3/8 x 1 CARRIAGE BOLT	4
4	R07794	3/8 FLANGE NUT	4



GUARANTEE

All Husky Farm Equipment manufactured by Husky Farm Equipment Limited is guaranteed. Guarantee covers all the replacement cost or repair of all parts said to be defective from manufacture. Guarantee also covers labour installing said parts, if installed at Husky's Manufacturing plant. Time and use is the essence of the guarantee. If equipment is used on a private property for an individual's use, guarantee will be in effect for twelve months from date of invoice. If equipment is used for commercial use to do custom work for money then guarantee will be in effect for three months only from date of invoice.

EXEMPTIONS FROM GUARANTEE

Cost of transportation of equipment to or from Husky Farm Equipment Limited either by customer or by Husky's service staff or cost of mail or public transportation is not covered. Tires and electric or hydraulic motors are covered by manufacturer's warranty and although Husky may assist to get warranty, Husky will not be responsible other than that allowed by manufacturer's warranty. Items subject to normal wear from use not covered by guarantee if faulty part is simply worn.

