

Date Purchased _____ Machine Serial No. _____

Size of Spreader _____ Options _____

The key number system in this parts book is arranged as follows:

- ⊙ - Key numbers with two circles denotes main assemblies.
- - Key numbers with one circle are individual parts

Please order parts by number



18000L SLIMLINE SPREADER • 394-00-00-000

OPERATING INSTRUCTIONS:

1. Heed all warnings.
2. Minimum HP requirements to safely operate on level terrain, on hilly terrain HP should be increased.

4500L	70 HP
7000L	85 HP
9000L	95 HP
12000L	110 HP
14000L	130 HP
15000L	140 HP
18000L	160 HP
24500L	200 HP
27500L	250 HP

3. If machine is equipped with hydraulic brakes that are operated from the tractor hydraulics, they will not work should the tractor motor stop. Inspect brakes before each use. Brakes must be bled before initial use unless installed at factory. When releasing brakes the tractor hydraulic lever must be put in the opposing position to release pressure. Do not put in float position they will not release.
4. Tractor PTO spline must be approximately 14" (355mm) from end of compressed PTO for proper adjustment
5. Hitch tanker to tractor with minimum 1-1/2" (38mm) hardened hitch pin with a safety lock. Use two - 14,000 Lbs safety chains from spreader to tractor (4:1 Safety factor on the chain minimum).
6. Do not use tongue stand to support loaded spreader. Put jack in storage position before using.
7. When hooking PTO to tractor make sure motor is stopped. Make sure QD (Quick Disconnect) safety locking pin is in locked position before using.
8. Clean off hose ends before plugging into tractor hydraulics. If spreader is equipped with hydraulic drive on spreading attachment, make sure tractor has sufficient oil flow and pressure to maintain satisfactory spread pattern, if not use another tractor.

This Page is Intentionally Left Blank

OPERATING INSTRUCTIONS continued:

9. After using spreader in freezing conditions make sure impeller housing is drained.
10. Wash tank inside and out each time work is finished. This will increase the life of the tank by many years. See item 6 of Safety instructions
11. Do not drive on public roads after dusk unless equipped with lights required by Department of Transportation in your area.
12. Remove wheels annually and grease wheel bearings.
13. Because manure smells, many farmers have made unfriendly neighbours. If in a residential area a manure injector is a recommended option to bury the smell.
14. Much of the fertilizer value of manure is lost when exposed to air. Getting the manure covered quickly is a very important part of spreading manure.
15. If rustproof coating on interior shows signs of deterioration, have interior repainted. This can be done with a roller or brush. This helps to increase the life of your spreader. It is a valuable maintenance procedure.

SAFETY INSTRUCTIONS:

Do not operate this machine until you fully understand the safe operating practices.

1. Make sure all moving parts are shielded to prevent coming in contact with loose clothing.
2. Keep children clear; do not let children or any person(s) ride the spreader at anytime.
3. Do not support loaded spreader on tongue jack.
4. Keep tire pressure to recommended pressure at all times. Recommended tire pressure being:

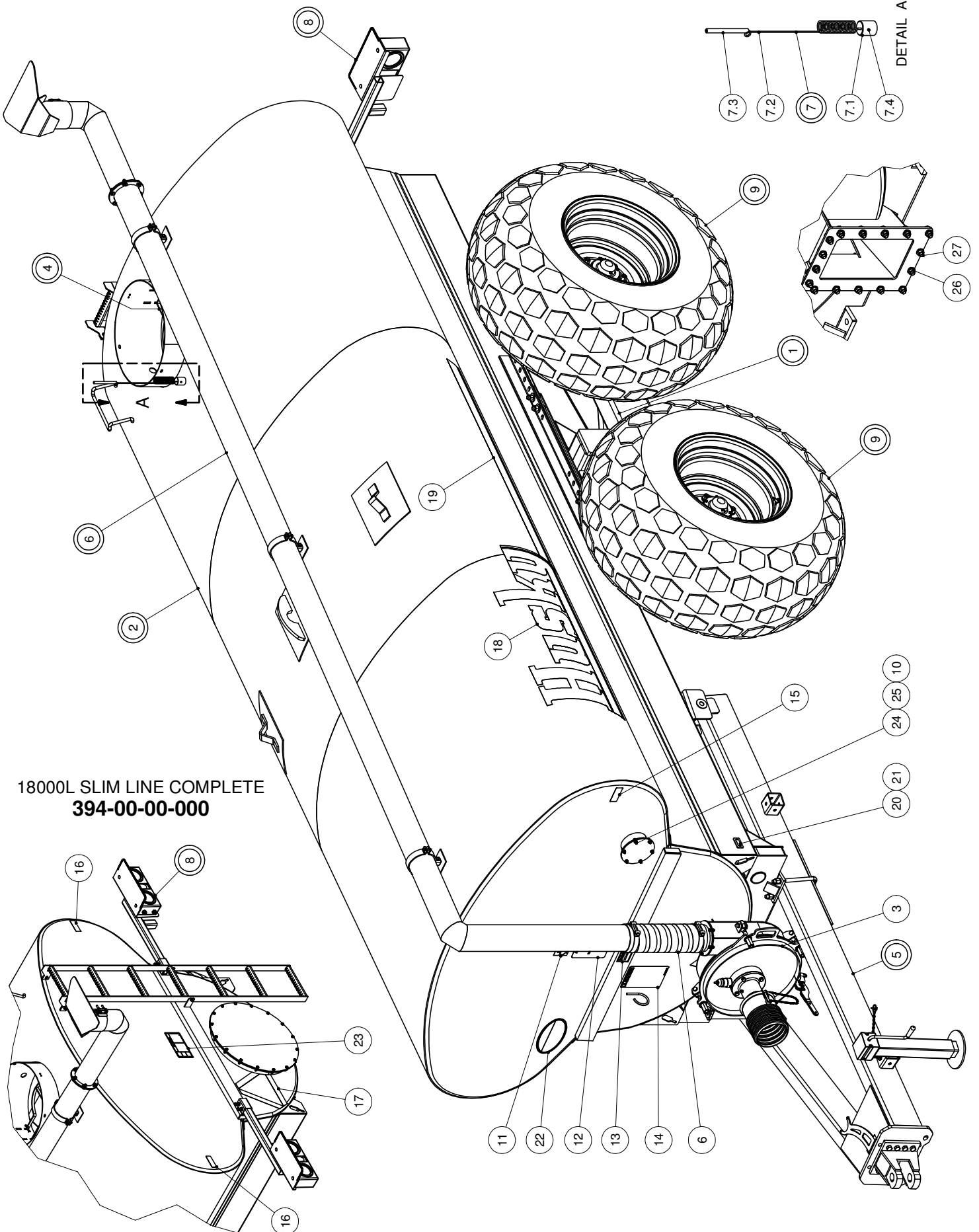
Size	Description	PSI	KPA
40 x 14	Airplane Tires	55	379
44 x 16	Airplane Tires	55	379
47 x 18 x 18	Airplane Tires	55	379
50 x 20 x 20	Airplane Tires	55	379
16.5L x 16.1	Implement Tires	35	241
21.5L x 16.1	Implement Tires	35	241
18.4L x 26	Turf Tires	30	207
23.1L x 26	Turf Tires	24	166
28L x 26	Turf Tires	24	166
30.5L x 32	Turf Tires	35-40	241
35.5L x 32	20 ply Turf Tires	35	241
18L x 22.5	Truck Tires	65	448
23.5L x 25	Loader Dozer Tires	55	379

5. Keep wheel bolts torqued to the recommended torque at all times. (Check Daily)

Wheel Bolt Size	Ft/Lbs Torque (Dry)	Ft/Lbs. - Oiled	Meter/Kg - Torque Dry	Meter/Kg - Oiled
9/16 – 18 NF GR. 5	120	90	16.59	12.44
5/8 – 18 NF GR. 8	240	180	33.18	24.89
3/4 – 16 NF GR. 8	420	310	58.07	42.86

6. Never enter a tanker without special breathing equipment to supply oxygen. Manure gases can kill instantly. One breath of Hydrogen Sulphide can kill.
7. When repairing hydraulic hoses, always relieve pressure in hose. Always wear safety glasses while working on spreader.
8. Caution – disc brakes will not release until valve lever is held momentarily in opposite position. This will relieve pressure in brake line. Do not put in float position, they will not release. (Rule does not apply to Husky Manure Spreaders equipped with a Knott Brake System)

18000L SLIM LINE COMPLETE

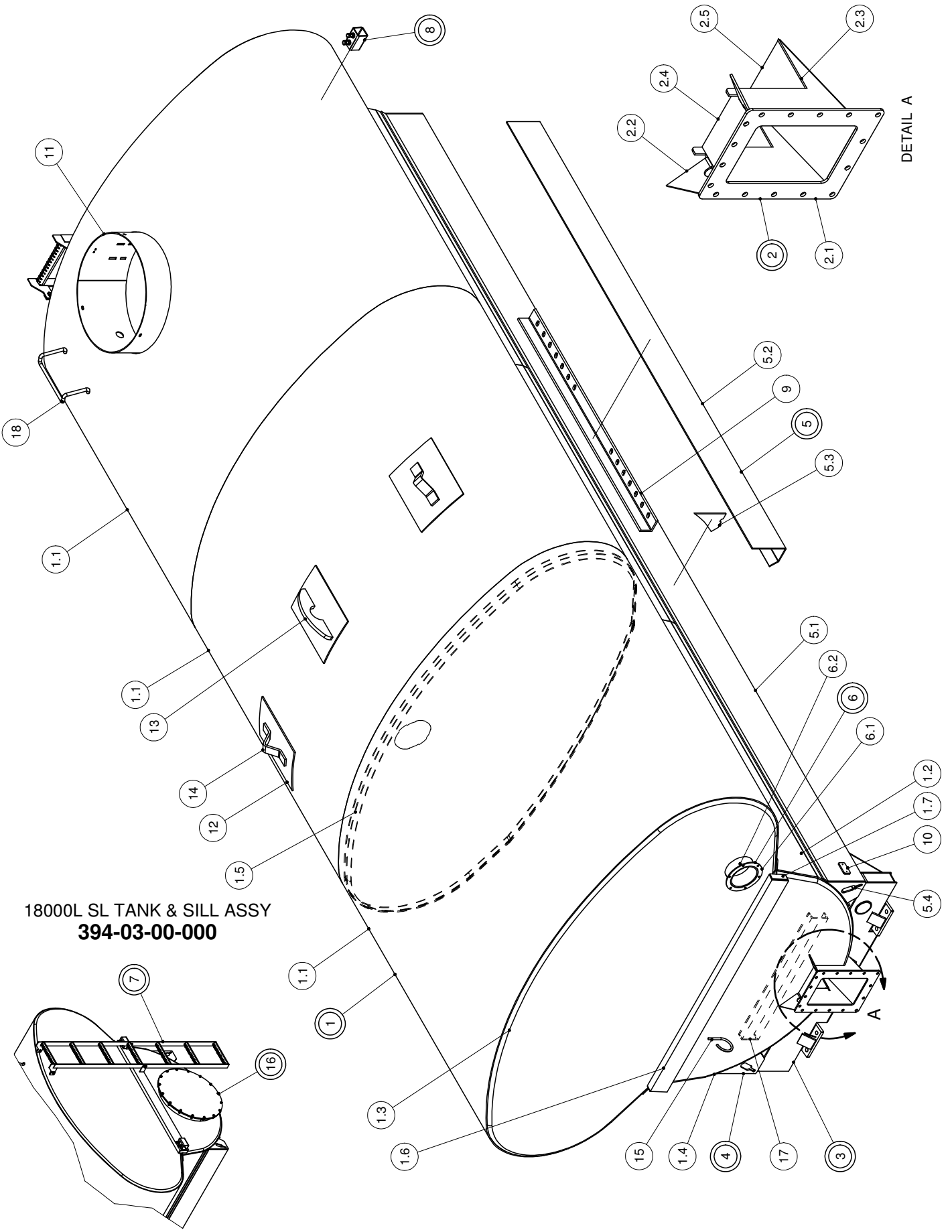


18000L SLIM LINE COMPLETE
394-00-00-000

18000L SLIM LINE COMPLETE

PARTS LIST			
ITEM	PART NUMBER	DESCRIPTION	QTY
1	394-01-00-000	18000 L AXLE KIT	1
2	394-03-00-000	18000L TANK & SILL ASSY COMPLETE	1
3	384-51-00-000	1000 FAN & HOUSING COMPLETE-TAPERED SHAFT	1
4	357-63-00-000	SAFETY BAR ASSY	1
5	357-29-00-000	ELITE & 18L SL TONGUE & HITCH KIT	1
6	394-04-00-000	6" DISCHARGE PIPE KIT-18000L SLIM LINE	1
7	340-62-00-000	INDICATOR KIT	1
7.1	340-00-00-536	FLAG SPRING HOLDER	1
7.2	R08037	SPRING FOR SPREADER FLAG	1
7.3	340-62-00-553	INDICATOR HOSE	1
7.4	R07906	5/16-18 UNC x 0.31 SET SCREW - ZINC	1
8	357-30-00-000	LED TAIL LIGHT KIT	1
9	330-04-00-000	28L x 26 TIRE & WHEEL ASSY	4
10	330-00-00-559	ACCESS TUBE COVER PLATE	1
11	R09509	"MADE IN CANADA" DECAL - LARGE	1
12	R09730	TORQUE, TIRE PRESSURE DECAL	1
13	R09512	CAPACITY DECAL	1
14	R09783	"CAUTION" DECAL	1
15	R10097	AMBER REFLECTOR	1
16	R10096	RED REFLECTOR	2
17	R09501	SLOW MOVING VEHICLE DECAL	1
18	R09510	"HUSKY" DECAL	2
19	R09511	ACCENT STRIP	2
20	R09071	SERIAL NUMBER PLATE	1
21	R08152	#6 x 1/4" PAN HD SOCKET SCREW	2
22	R10335	MANURE SPILL DECAL	1
23	R10334	TOXIC GAS PICTORIAL DECAL	1
24	R07619	3/8-16 UNC x 1 HEX BOLT GR.5	6
25	R07794	3/8-16 UNC FLANGE NUT - ZINC	6
26	R07795	1/2-13 UNC FLANGE NUT - ZINC	16
27	R07674	1/2-13 UNC x 1.25 HEX BOLT GR.5	16

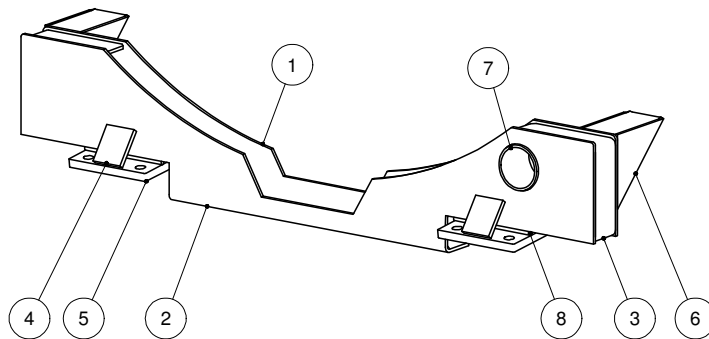
18000L SLIM LINE TANK ASSY



18000L SL TANK & SILL ASSY
394-03-00-000

18000L SLIM LINE TANK ASSY

PARTS LIST				PARTS LIST			
ITEM	PART NUMBER	DESCRIPTION	QTY	ITEM	PART NUMBER	DESCRIPTION	QTY
1	394-03-01-000	18000L TANK ASSY	1	5.2	394-03-02-028	INNER SILL	1
1.1	395-08-01-045	TOP SHELL (LONG)	3	5.3	394-03-02-029	SILL STIFFENER	4
1.2	394-03-01-020	BOTTOM SHELL	3	5.4	394-03-02-030	SILL CAP	2
1.3	394-03-01-021	TOP END	2	6	330-20-03-000	ACCESS TUBE ASSY	1
1.4	394-03-01-022	BOTTOM FLANGED END	2	6.1	330-20-03-560	ACCESS TUBE FLANGE	1
1.5	394-03-01-023	BAFFLE	2	6.2	330-20-03-556	ACCESS TUBE	1
1.6	394-03-01-024	TANK END STIFFENER	2	7	394-07-00-000	LADDER ASSY	1
1.7	330-66-00-258	STIFFENER END CAP	4	8	357-30-03-000	MOUNT BRKT ASSY	2
2	364-82-00-000	FLANGED TANK OUTLET	1	9	364-02-00-280	AXLE ADJUSTMENT ANGLE	2
2.1	364-81-02-393	HOUSING FLANGE	1	10	340-01-00-498	SERIAL NO. BACK PLATE	1
2.2	364-82-00-395	LH OUTLET SIDE PC	1	11	364-02-00-006	24" MANHOLE	1
2.3	364-82-00-396	RH OUTLET SIDE PC	1	12	340-01-00-546	LIFT HOOK REINFORCING PLATE	3
2.4	364-01-03-104	OUTLET TOP PC	1	13	340-01-00-555	CENTER LIFT HOOK	1
2.5	364-01-03-105	OUTLET BOTTOM PC	1	14	300-01-00-012	TANK LIFT HOOK	2
3	394-02-00-000	CROSS MEMBER	1	15	315-30-00-108	HYD. HOSE HOOK	1
4	394-03-03-000	R.H. SILL ASSY	1	16	384-40-00-000	ACCESS HOLE & COVER PLATE KIT	1
5	394-03-02-000	L.H. SILL ASSY	1	17	384-01-00-246	INSIDE CROSS SUPPORT CHANNEL	1
5.1	394-03-02-027	SILL	1	18	364-02-00-008	LADDER RUNG	1



**18000L S.L. CROSS MEMBER ASSY
394-02-00-000**

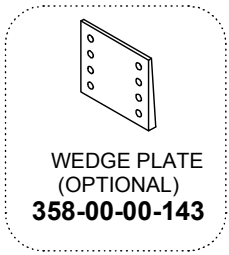
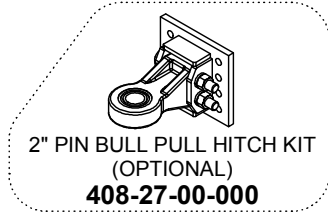
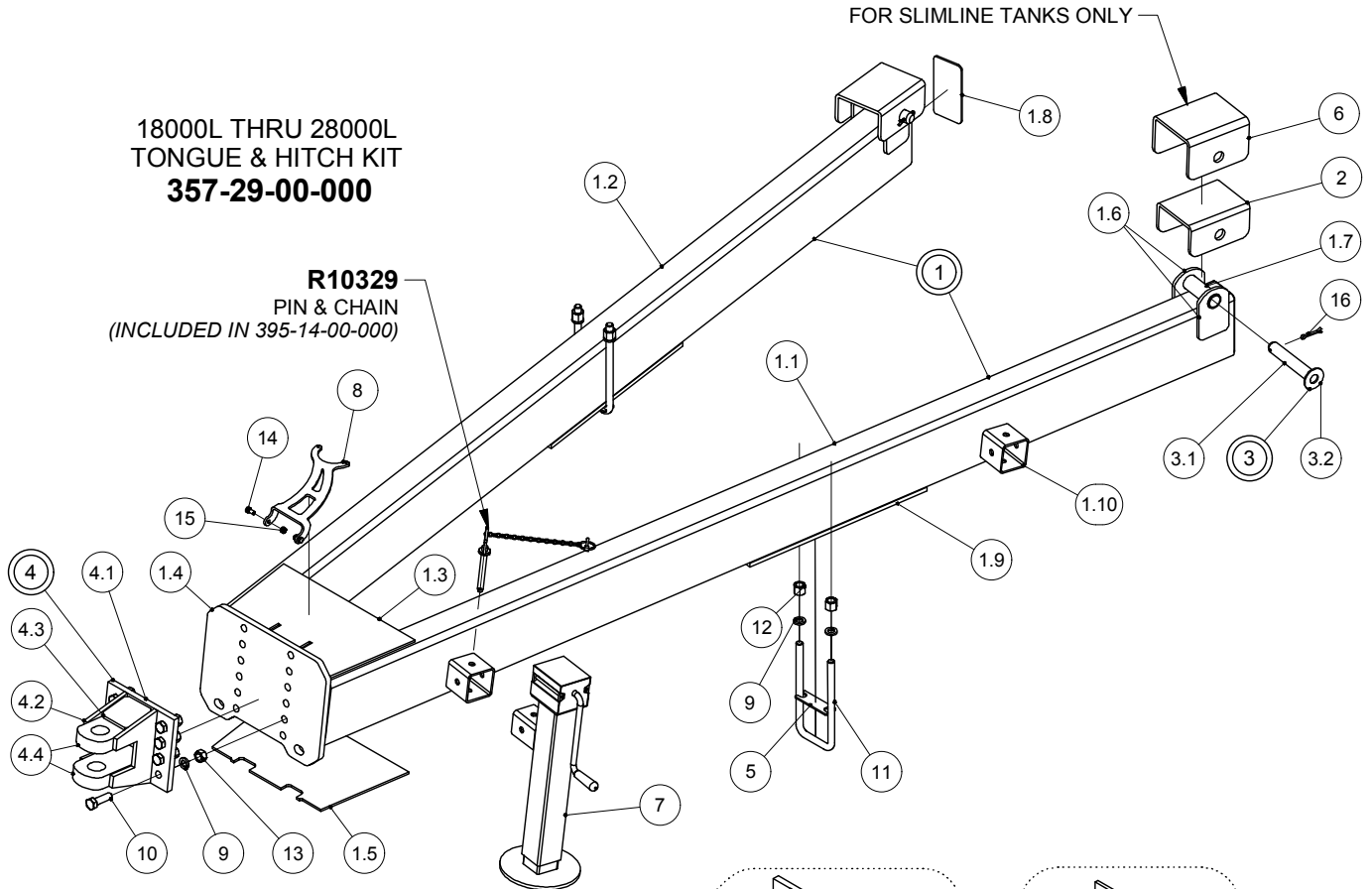
PARTS LIST			
ITEM	PART NUMBER	DESCRIPTION	QTY
1	394-02-00-036	REAR CROSS MEMBER	1
2	394-02-00-035	FRONT CROSS MEMBER	1
3	394-02-00-037	CROSS MEMBER CAP	2
4	364-02-17-123	TONGE STRAP GUSSET	2
5	358-45-00-148	TONGUE STRAP	2
6	340-07-00-330	DOUBLE GUSSET	2
7	395-02-00-020	ACCESS TUBE	1
8	394-02-00-059	FILLER ROD	2

18000L THRU 28000L TONGUE & HITCH KIT

**18000L THRU 28000L
TONGUE & HITCH KIT
357-29-00-000**

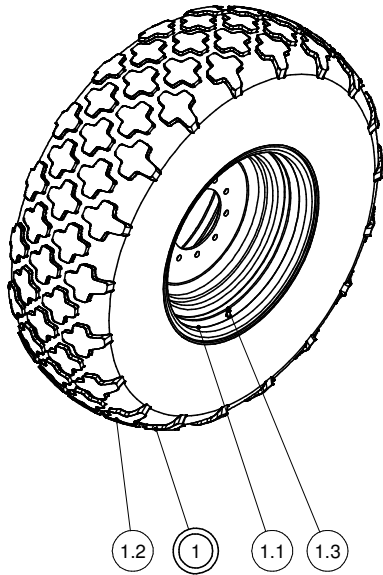
**R10329
PIN & CHAIN
(INCLUDED IN 395-14-00-000)**

FOR SLIMLINE TANKS ONLY

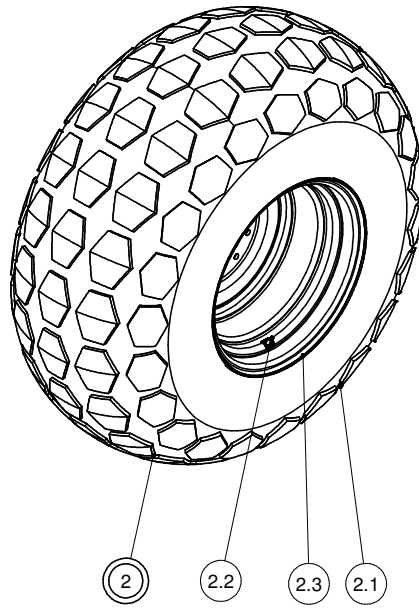


PARTS LIST				PARTS LIST			
ITEM	PART NUMBER	DESCRIPTION	QTY	ITEM	PART NUMBER	DESCRIPTION	QTY
1	357-27-00-000	ELITE & 18000L SL TONGUE ASSY	1	4.1	358-43-00-139	HITCH BACK PLATE	1
1.1	357-27-00-165	LH TONGUE TUBE	1	4.2	358-43-00-141	HITCH SIDE GUSSET	2
1.2	357-27-00-164	RH TONGUE TUBE	1	4.3	358-43-00-142	HITCH UPPER GUSSET	2
1.3	357-27-00-166	UPPER TONGUE TUBE GUSSET	1	4.4	408-04-00-011	HITCH PLATE	2
1.4	358-42-00-137	HITCH BOLT PLATE	1	5	364-00-00-131	U - BOLT SPACER	2
1.5	357-27-00-310	LOWER TONGUE TUBE GUSSET	1	6	394-03-00-014	TONGUE "U" PC - SLIMLINE	2
1.6	315-36-00-146	TONGUE SIDE PC	4	7	395-14-00-000	8000 Lb TONGUE JACK w/SQ TUBE & PIN	1
1.7	315-36-00-145	TONGUE BUSHING	2	8	395-07-00-076	PTO HOLDER BRACKET	1
1.8	315-36-00-147	TONGUE TUBE COVER	2	9	R07807	3/4 LOCK WASHER - ZINC	12
1.9	357-00-00-129	TONGUE REINFORCING PLATE	2	10	R07655	3/4-10 UNC x 2.5 HEX BOLT GR.5	8
1.10	395-07-01-059	TONGUE JACK OUTER BRKT	2	11	R08172	3/4" UNF x 10" - "U" BOLT	2
2	315-31-00-115	TONGUE "U" PC - ELITE	2	12	R07820	3/4-16 UNF HIGH HEX NUT - GR.8	4
3	315-39-00-000	LOCK PIN ASSY	2	13	R07787	3/4-10 UNC HEX NUT - ZINC	8
3.1	315-39-00-155	TONGUE LOCK PIN	1	14	R07688	3/8-16 UNC x 0.75 HEX BOLT GR.5	2
3.2	R07828	1 FLAT WASHER STD - ZINC	1	15	R07886	3/8-16 UNC 2-WAY LOCK NUT - ZINC	2
4	408-04-00-000	HD CLEVIS HITCH ASSY-1 3/4" HOLE	1	16	R08016	1/4 x 2 COTTER PIN - SS	2

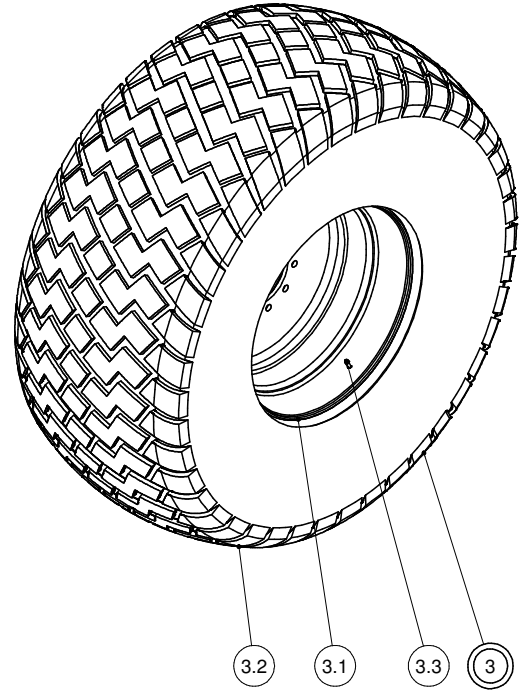
18000L TIRES



**18.4L x 26 TIRE & WHEEL ASSY
340-68-00-000**



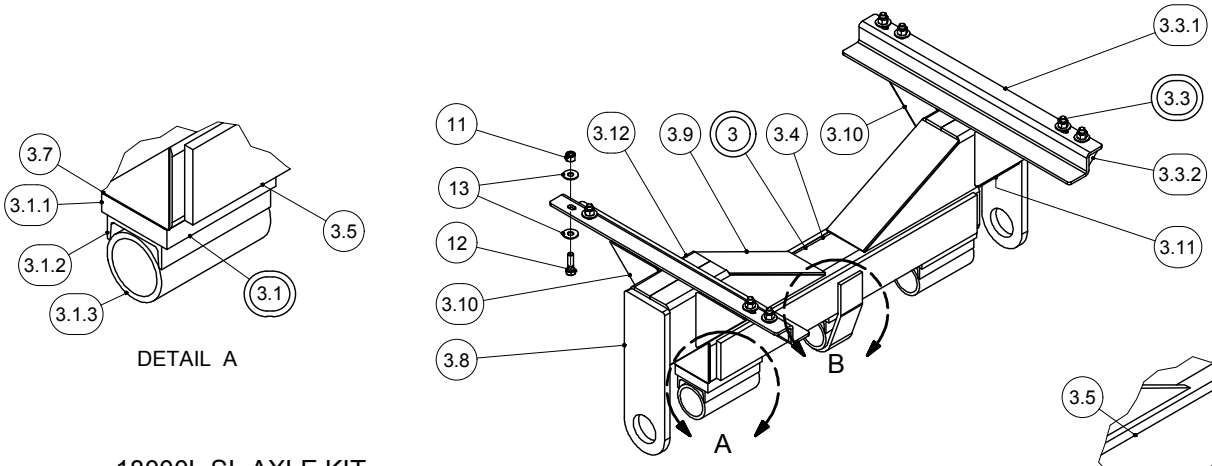
**28L x 26 TIRE & WHEEL ASSY
330-04-00-000**



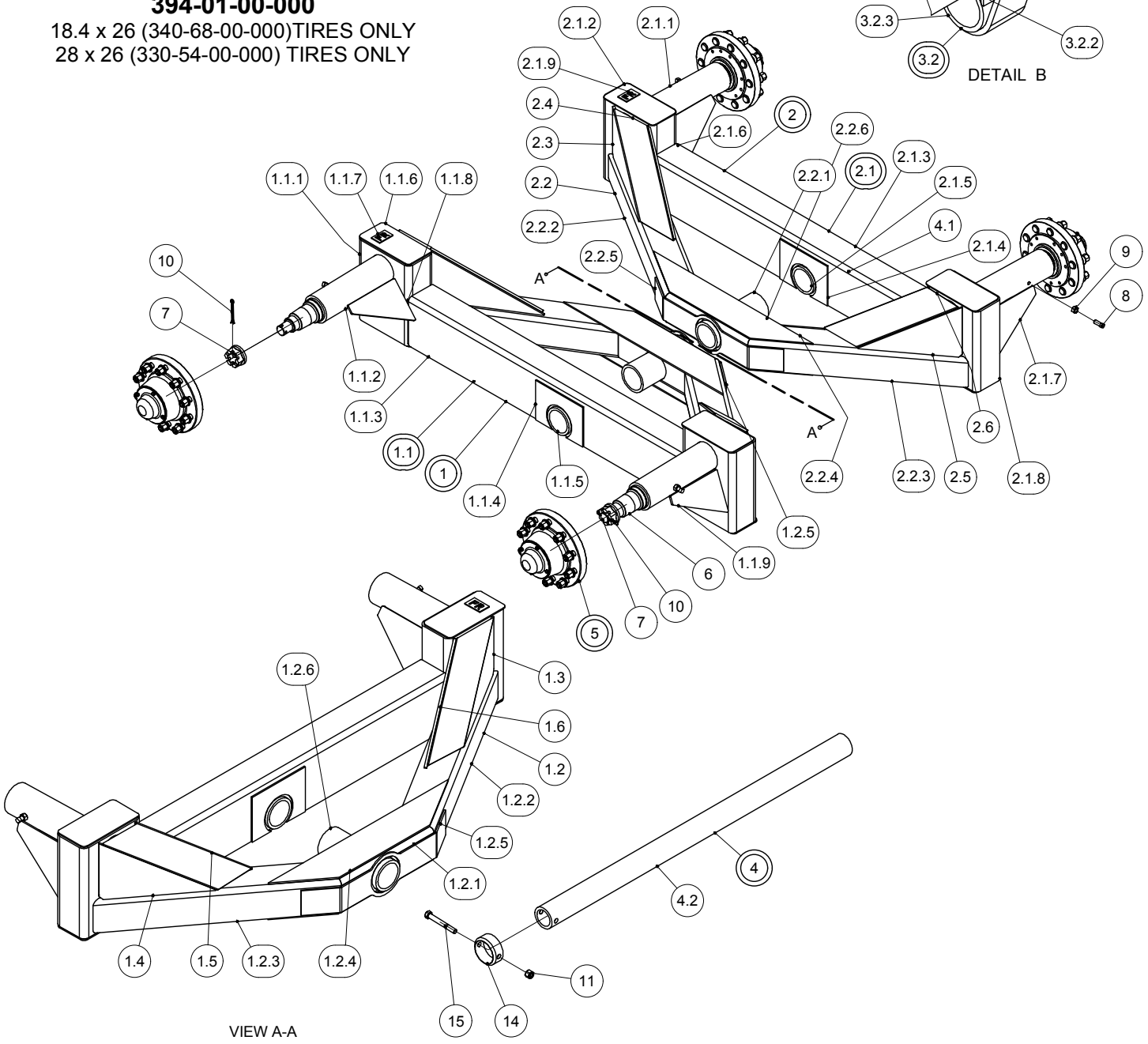
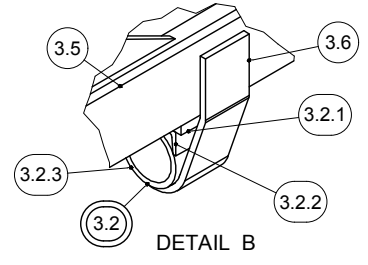
**30.5 RADIAL TIRE & WHEEL ASSY
358-19-00-000**

PARTS LIST			
ITEM	PART NUMBER	DESCRIPTION	QTY
1	340-68-00-000	18.4 X 26 TIRE & WHEEL ASSY	1
1.1	R20075	16" x 26" 10 BOLT WHEEL	1
1.2	R20100	18.4" x 26" 10 PLY TBLS TIRE	1
1.3	R20161	VALVE STEM	1
2	330-04-00-000	28L x 26 TIRE & WHEEL ASSY	1
2.1	R20015	28L x 26 TURF TIRE	1
2.2	R20161	VALVE STEM	1
2.3	R20040	26xDW25B 10-Bolt Wheel 11.25 B.C.	1
3	358-19-00-000	TIRE & WHEEL ASSY - 750/60Rx30.5	1
3.1	R22568	30.5 x 24 10 BOLT WHEEL	1
3.2	R22567	750/60R x 30.5 X 32 ALLIANCE TIRE	1
3.3	R20161	VALVE STEM	1

18000L SLIMLINE AXLE KIT



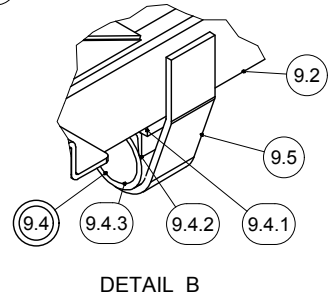
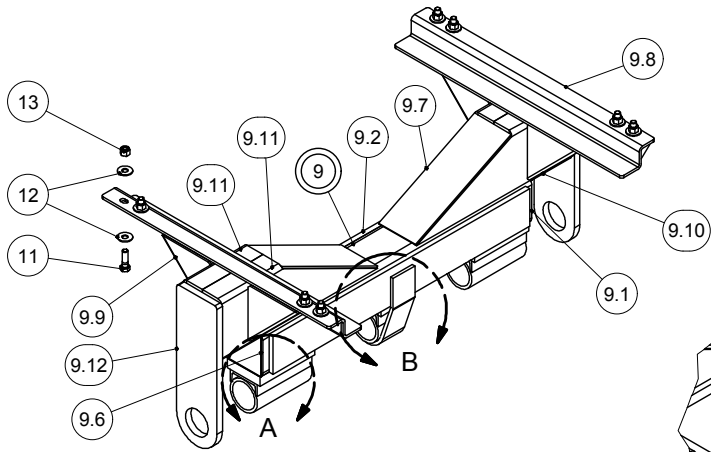
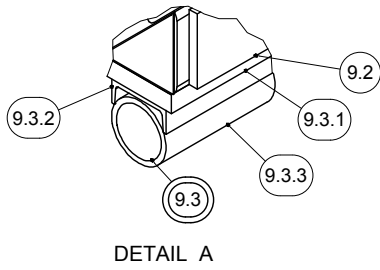
18000L SL AXLE KIT
394-01-00-000
 18.4 x 26 (340-68-00-000) TIRES ONLY
 28 x 26 (330-54-00-000) TIRES ONLY



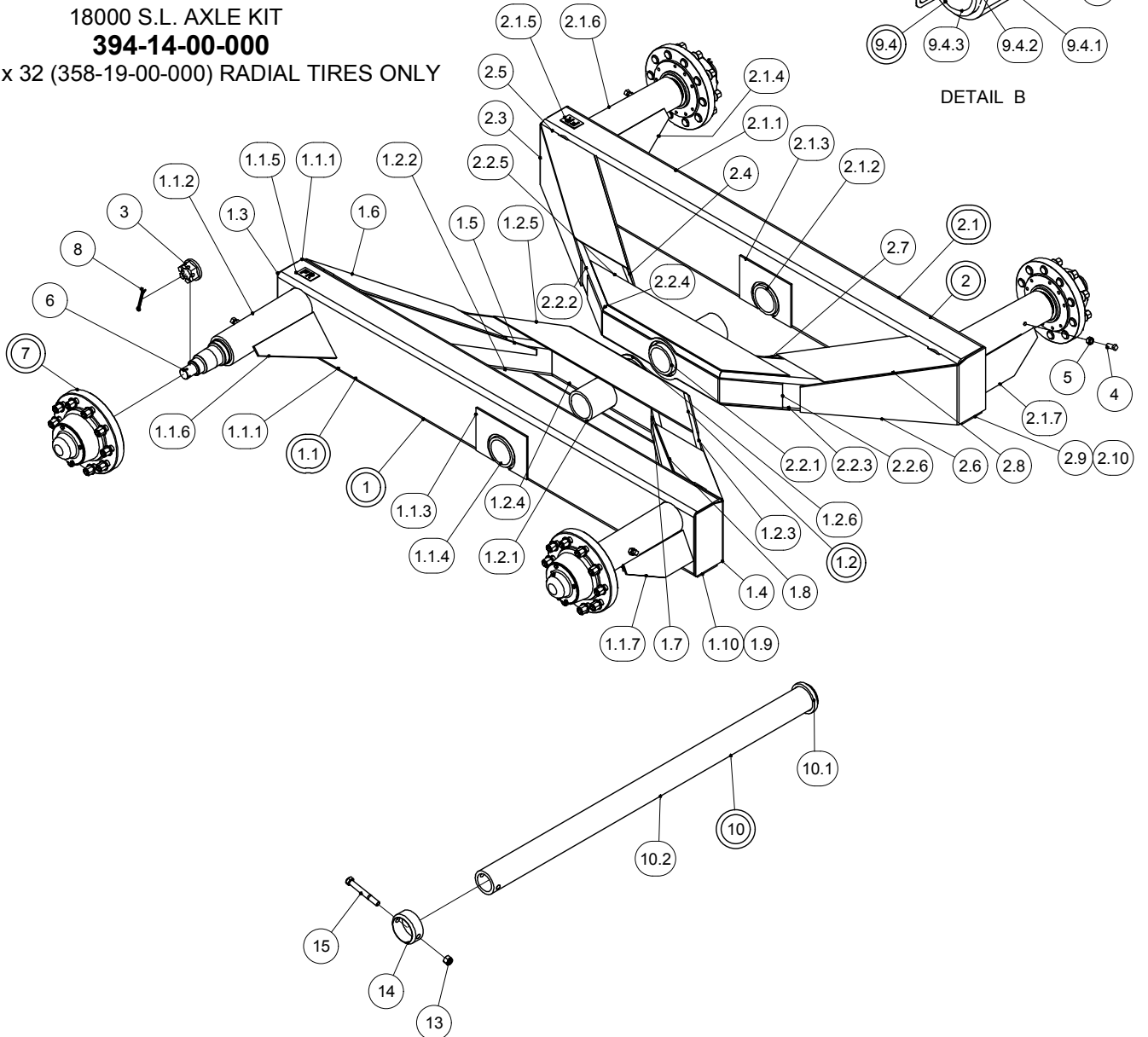
18000L SLIMLINE AXLE KIT

PARTS LIST				PARTS LIST			
ITEM	PART NUMBER	DESCRIPTION	QTY	ITEM	PART NUMBER	DESCRIPTION	QTY
1	394-01-08-000	LH TANDEM SIDE ASSY	1	2.3	394-01-08-048	FRONT GUSSET	2
1.1	394-01-03-000	LH WALKING BEAM ASSY	1	2.4	394-01-08-050	FRONT GUSSET CAP	1
1.1.1	394-01-03-009	FRONT LH VERTICAL TUBE	2	2.5	394-01-08-040	REAR GUSSET	2
1.1.2	358-83-01-230	SPINDLE SLEEVE	2	2.6	394-01-08-047	REAR GUSSET CAP	1
1.1.3	394-01-03-008	WALKING BEAM	1	3	395-01-06-000	BASE FRAME ASSY 18-27500L SL	1
1.1.4	394-01-03-051	ROCKER SLEEVE REINFORCING PLATE	2	3.1	358-09-02-000	OUTER SLEEVE ASSY	2
1.1.5	394-01-03-012	WALKER SLEEVE	1	3.1.1	358-85-00-251	SPACER BAR	1
1.1.6	394-01-03-017	COVER PLATE	4	3.1.2	340-07-08-323	5" CHANNEL @ 9LB	1
1.1.7	358-01-00-401	"FRONT" PLATE	1	3.1.3	340-07-08-322	STATIONARY SLEEVE	1
1.1.8	394-01-03-056	FILLER BAR	6	3.2	394-01-11-000	INNER SLEEVE ASSY	1
1.1.9	394-01-03-013	SPINDLE SLEEVE GUSSET	4	3.2.1	394-01-11-016	SPACER BAR	1
1.2	394-01-10-000	AXLE "A" FRAME ASSY	1	3.2.2	394-01-11-015	5" CHANNEL @ 9LB	1
1.2.1	394-01-10-018	CONNECTOR TUBE	1	3.2.3	394-01-02-006	CENTER SLEEVE TUBE	1
1.2.2	394-01-10-039	FRONT TANDEM ARM	1	3.3	330-69-01-000	SILL "Z" PLATE ASSY	2
1.2.3	394-01-10-038	REAR TANDEM ARM	1	3.3.1	358-85-00-253	SILL "Z" PLATE	1
1.2.4	394-01-10-042	GUSSET	2	3.3.2	330-69-00-550	GUSSET	2
1.2.5	394-01-10-043	REAR TANDEM ARM GUSSET	1	3.4	394-01-01-001	CROSS AXLE SUPPORT TUBE	1
1.2.6	358-83-01-235	WALKER SLEEVE	1	3.5	395-01-06-014	REINFORCING BAR	2
1.3	394-01-08-048	FRONT GUSSET	2	3.6	395-01-06-015	REINFORCING "U" PC	1
1.4	394-01-08-040	REAR GUSSET	2	3.7	340-07-00-329	CROSS AXLE SUPPORT COVER PLATE	2
1.5	394-01-08-047	REAR GUSSET CAP	1	3.8	395-01-06-075	HD HANGER BRKT	2
1.6	394-01-08-050	FRONT GUSSET CAP	1	3.9	394-01-01-003	EXTENSION TUBE CAP	2
2	394-01-09-000	RH TANDEM SIDE ASSY	1	3.10	394-01-01-034	DOUBLE GUSSET	4
2.1	394-01-04-000	RH WALKING BEAM ASSY	1	3.11	394-01-01-033	FILLER PLATE	2
2.1.1	358-83-01-230	SPINDLE SLEEVE	2	3.12	394-01-13-000	CROSS AXLE EXTENSION TUBE ASSY	2
2.1.2	394-01-03-017	COVER PLATE	4	4	394-01-12-000	MAIN AXLE TUBE ASSY	1
2.1.3	394-01-03-008	WALKING BEAM	1	4.1	340-63-00-538	STOP RING	1
2.1.4	394-01-03-051	ROCKER SLEEVE REINFORCING PLATE	2	4.2	394-01-12-087	MAIN AXLE TUBE	1
2.1.5	394-01-03-012	WALKER SLEEVE	1	5	358-11-00-000	16000LB DUCTILE HUB KIT	4
2.1.6	394-01-03-056	FILLER BAR	4	6	340-00-00-347	16000 SPINDLE	4
2.1.7	394-01-03-013	SPINDLE SLEEVE GUSSET	4	7	R20094	SPINDLE FLANGE NUT 1 3/4 - 12 UNF	4
2.1.8	394-01-03-009	FRONT LH VERTICAL TUBE	2	8	R07927	5/8-11 UNC x 1.5 SQ HD SET SCREW -	4
2.1.9	358-01-00-401	"FRONT" PLATE	1			BLK	
2.2	394-01-10-000	AXLE "A" FRAME ASSY	1	9	R07786	5/8-11 UNC HEX NUT - ZINC	4
2.2.1	394-01-10-018	CONNECTOR TUBE	1	10	R20095	5/16 x 4 COTTER PIN - ZINC	4
2.2.2	394-01-10-039	FRONT TANDEM ARM	1	11	R07878	3/4-10 UNC NYLOCK NUT - ZINC	9
2.2.3	394-01-10-038	REAR TANDEM ARM	1	12	R07655	3/4-10 UNC x 2.5 HEX BOLT GR.5	8
2.2.4	394-01-10-042	GUSSET	2	13	R07827	3/4 FLAT WASHER STD - ZINC	16
2.2.5	394-01-10-043	REAR TANDEM ARM GUSSET	1	14	357-00-00-118	RETAINING RING	1
2.2.6	358-83-01-235	WALKER SLEEVE	1	15	R07660	3/4-10 UNC x 6 HEX BOLT GR.5	1

18000L SLIM LINE AXLE KIT FOR 30.5 TIRES



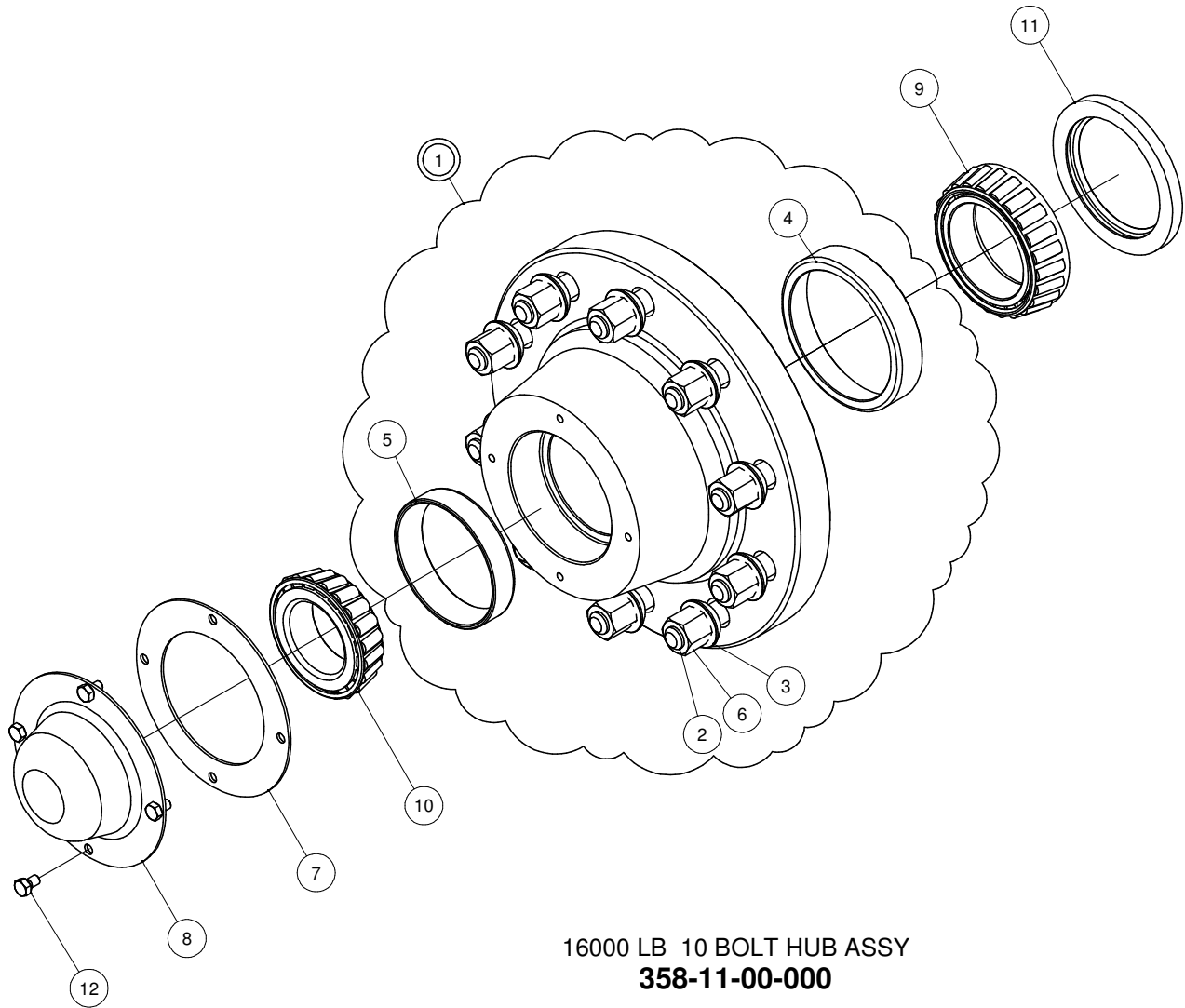
18000 S.L. AXLE KIT
394-14-00-000
 30.5 x 32 (358-19-00-000) RADIAL TIRES ONLY



18000L SLIM LINE AXLE KIT FOR 30.5 TIRES

PARTS LIST				PARTS LIST			
ITEM	PART NUMBER	DESCRIPTION	QTY	ITEM	PART NUMBER	DESCRIPTION	QTY
1	394-14-03-000	LH TANDEM SIDE ASSY	1	2.4	394-14-01-094	FRONT INNER GUSSET	1
1.1	394-14-04-000	LH WALKING BEAM ASSY	1	2.5	394-14-01-095	RH FRONT TOP CAP	1
1.1.1	394-14-04-099	LH WALKING BEAM	1	2.6	394-14-01-096	RH REAR CAP	1
1.1.2	394-14-02-089	SPINDLE SLEEVE	2	2.7	394-14-01-097	RH REAR CAP	1
1.1.3	394-01-03-051	ROCKER SLEEVE REINFORCING PLATE	2	2.8	394-14-01-098	RH REAR TOP CAP	1
1.1.4	394-01-03-012	WALKER SLEEVE	1	2.9	394-14-01-103	REAR BOTTOM TIE GUSSET	1
1.1.5	358-01-00-401	"FRONT" PLATE	1	2.10	394-14-01-102	FRONT BOTTOM TIE GUSSET	1
1.1.6	355-05-03-009	SPINDLE SLEEVE GUSSET	2	3	R20094	SPINDLE FLANGE NUT 1 3/4 - 12 UNF	4
1.1.7	394-14-02-104	SPINDLE SLEEVE GUSSET	2	4	R07927	5/8-11 UNC x 1.5 SQ HD SET SCREW - BLK	8
1.2	394-14-05-000	AXLE "A" FRAME ASSY	1	5	R07786	5/8-11 UNC HEX NUT - ZINC	8
1.2.1	358-83-01-235	WALKER SLEEVE	1	6	340-00-00-347	16000 SPINDLE	4
1.2.2	394-01-10-039	FRONT TANDEM ARM	1	7	358-11-00-000	16000LB DUCTILE HUB KIT	4
1.2.3	394-01-10-038	REAR TANDEM ARM	1	8	R20095	5/16 x 4 COTTER PIN - ZINC	4
1.2.4	394-14-05-090	CONNECTOR TUBE	1	9	395-01-06-000	BASE FRAME ASSY 18-27500L SL	1
1.2.5	394-14-05-091	LARGE GUSSET	2	9.1	394-01-01-001	CROSS AXLE SUPPORT TUBE	1
1.2.6	394-14-05-092	REAR TANDEM ARM GUSSET	1	9.2	395-01-06-014	REINFORCING BAR	2
1.3	394-14-03-100	LH FRONT CAP PC	1	9.3	358-09-02-000	OUTER SLEEVE ASSY	2
1.4	394-14-03-101	LH REAR CAP PC	1	9.3.1	358-85-00-251	SPACER BAR	1
1.5	394-14-01-094	FRONT INNER GUSSET	1	9.3.2	340-07-08-323	5" CHANNEL @ 9LB	1
1.6	394-14-01-095	RH FRONT TOP CAP	1	9.3.3	340-07-08-322	STATIONARY SLEEVE	1
1.7	394-14-01-097	RH REAR CAP	1	9.4	394-01-11-000	INNER SLEEVE ASSY	1
1.8	394-14-01-098	RH REAR TOP CAP	1	9.4.1	394-01-11-016	SPACER BAR	1
1.9	394-14-01-102	FRONT BOTTOM TIE GUSSET	1	9.4.2	394-01-11-015	5" CHANNEL @ 9LB	1
1.10	394-14-01-103	REAR BOTTOM TIE GUSSET	1	9.4.3	394-01-02-006	CENTER SLEEVE TUBE	1
2	394-14-01-000	RH TANDEM SIDE ASSY	1	9.5	395-01-06-015	REINFORCING "U" PC	1
2.1	394-14-02-000	RH WALKING BEAM ASSY	1	9.6	340-07-00-329	CROSS AXLE SUPPORT COVER PLATE	2
2.1.1	394-14-02-088	RH WALKING BEAM	1	9.7	394-01-01-003	EXTENSION TUBE CAP	2
2.1.2	394-01-03-012	WALKER SLEEVE	1	9.8	330-69-01-000	SILL "Z" PLATE ASSY	2
2.1.3	394-01-03-051	ROCKER SLEEVE REINFORCING PLATE	2	9.9	394-01-01-034	DOUBLE GUSSET	4
2.1.4	355-05-03-009	SPINDLE SLEEVE GUSSET	2	9.10	394-01-01-033	FILLER PLATE	2
2.1.5	358-01-00-401	"FRONT" PLATE	1	9.11	394-01-13-000	CROSS AXLE EXTENSION TUBE ASSY	2
2.1.6	394-14-02-089	SPINDLE SLEEVE	2	9.12	395-01-06-075	HD HANGER BRKT	2
2.1.7	394-14-02-104	SPINDLE SLEEVE GUSSET	2	10	394-01-12-000	MAIN AXLE TUBE ASSY	1
2.2	394-14-05-000	AXLE "A" FRAME ASSY	1	10.1	340-63-00-538	STOP RING	1
2.2.1	358-83-01-235	WALKER SLEEVE	1	10.2	394-01-12-087	MAIN AXLE TUBE	1
2.2.2	394-01-10-039	FRONT TANDEM ARM	1	11	R07655	3/4-10 UNC x 2.5 HEX BOLT GR.5	8
2.2.3	394-01-10-038	REAR TANDEM ARM	1	12	R07827	3/4 FLAT WASHER STD - ZINC	16
2.2.4	394-14-05-090	CONNECTOR TUBE	1	13	R07878	3/4-10 UNC NYLOCK NUT - ZINC	9
2.2.5	394-14-05-091	LARGE GUSSET	2	14	357-00-00-118	RETAINING RING	1
2.2.6	394-14-05-092	REAR TANDEM ARM GUSSET	1	15	R07660	3/4-10 UNC x 6 HEX BOLT GR.5	1
2.3	394-14-01-093	RH FRONT CAP PC	1				

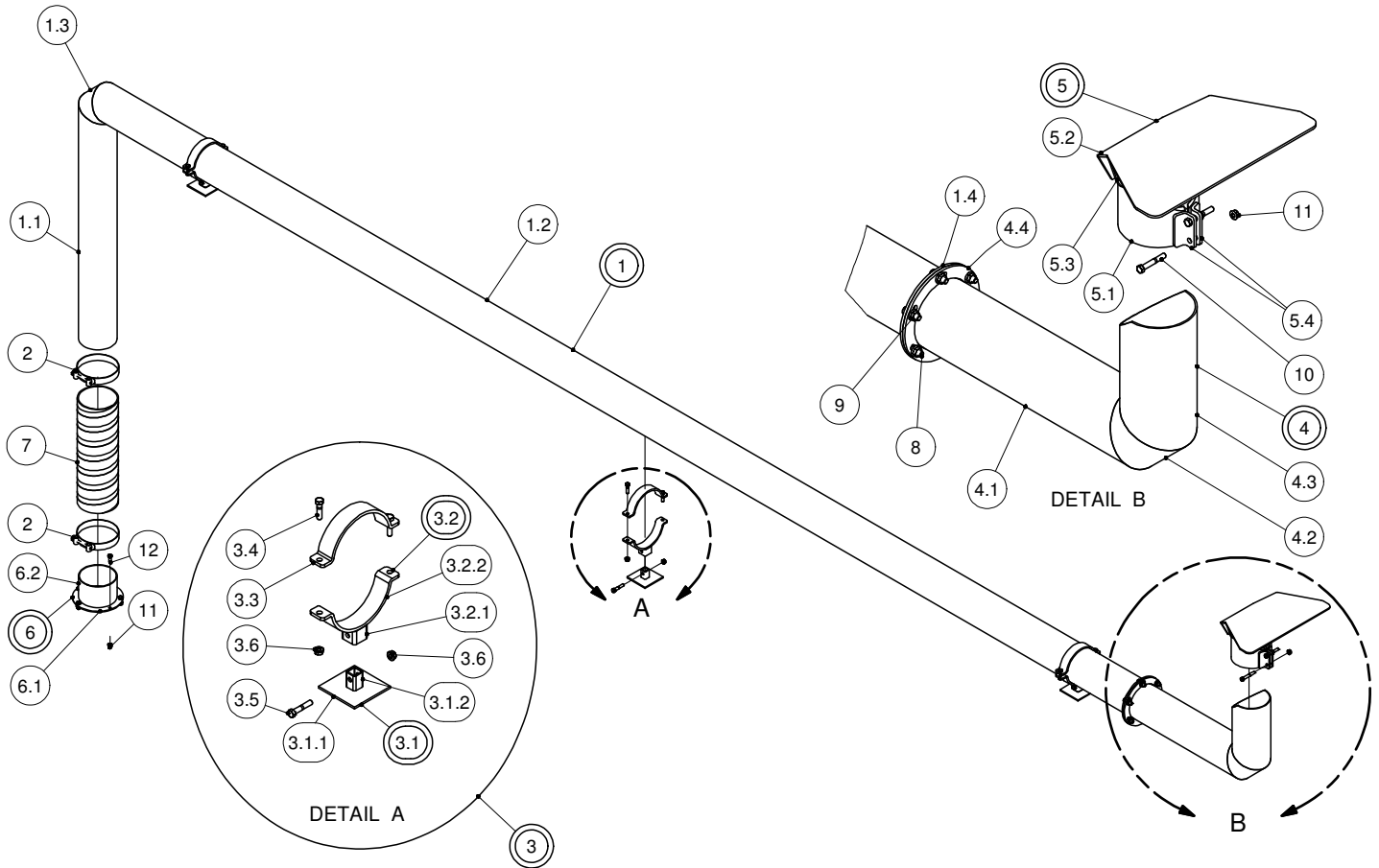
16000LB HUB ASSY



16000 LB 10 BOLT HUB ASSY
358-11-00-000

PARTS LIST			
ITEM	PART NUMBER	DESCRIPTION	QTY
1	358-11-00-259	16000LB DUCTILE HUB W/CUPS	1
2	R20096	3/4" WHEEL BOLTS	10
3	R20152	3/4" SPHERICAL WASHER	10
4	R20088	47620 INNER CUP	1
5	R20089	39520 OUTER CUP	1
6	R07820	3/4-16 UNF HIGH HEX NUT - GR.8	10
7	R20084	DUST CAP GASKET. 10 BOLT	1
8	R20093	DUST CAP - 16000 LB HUB	1
9	R20086	476871 3 1/4" INNER CONE	1
10	R20087	39585 2 1/2" OUTER CONE	1
11	R20083	CR-38730 HUB SEAL	1
12	R07694	5/16-18 UNC x 0.5 HEX BOLT GR.5	4

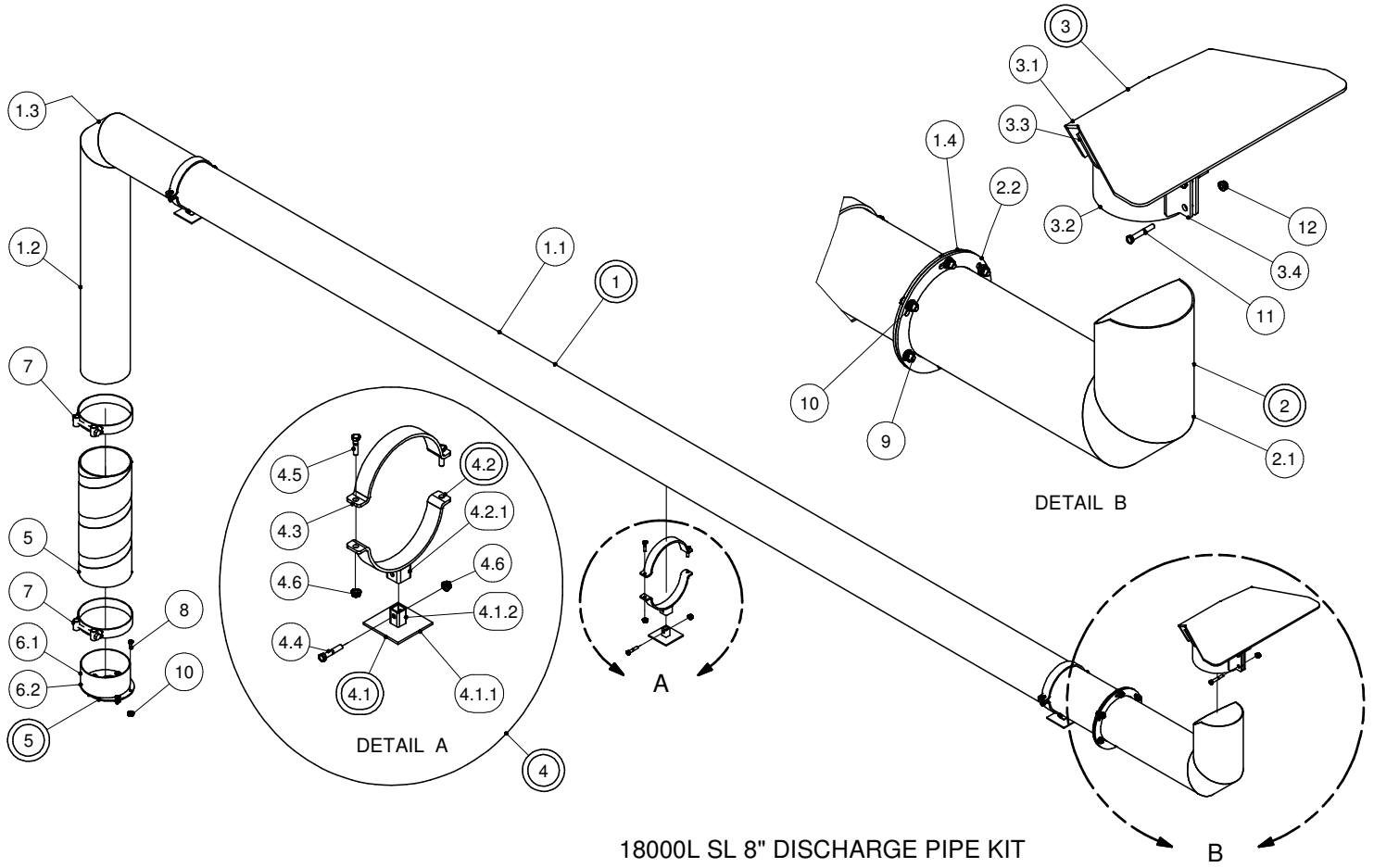
18000L SL 6" DISCHARGE PIPE KIT



18000L SL 6" DISCHARGE PIPE KIT
394-04-00-000

PARTS LIST				PARTS LIST			
ITEM	PART NUMBER	DESCRIPTION	QTY	ITEM	PART NUMBER	DESCRIPTION	QTY
1	394-04-01-000	DISCHARGE PIPE ASSY	1	4.1	364-25-00-088	DISCHARGE PIPE FLANGE PC	1
1.1	394-04-01-032	VERTICAL DISCHARGE PIPE	1	4.2	364-19-00-082	DISCHARGE PIPE CORNER PC	1
1.2	394-04-01-031	HORIZONTAL DISCHARGE PIPE	1	4.3	364-25-00-067	DISCHARGE PIPE END PC	1
1.3	364-19-00-082	DISCHARGE PIPE CORNER PC	1	4.4	364-19-00-087	DISCHARGE PIPE FLANGE	1
1.4	364-19-00-087	DISCHARGE PIPE FLANGE	1	5	364-68-00-000	6" SPLASH PLATE ASSY	1
2	R02482	6" HOSE CLAMP	2	5.1	364-68-00-215	CLAMPING TUBE	1
3	357-16-00-000	6" DISCHARGE PIPE HOLDER KIT	3	5.2	364-21-00-069	SPLASH PLATE	1
3.1	357-16-01-000	DISCHARGE PIPE BASE HOLDER ASSY	1	5.3	364-21-00-224	SPLASH PLATE WING	2
3.1.1	357-16-01-130	BASE PLATE	1	5.4	364-21-00-071	CLAMPING TUBE BRKT	2
3.1.2	357-16-01-131	LOWER STUB	1	6	364-31-00-000	HOSE TUBE ASSY - 6"	1
3.2	357-16-02-000	PIPE HOLDER ASSY	1	6.1	364-01-03-376	DISCHARGE RING	1
3.2.1	357-16-02-137	UPPER STUB	1	6.2	364-01-03-063	DISCHARGE TUBE	1
3.2.2	357-16-00-133	TOP PIPE HOLDER - 6"	1	7	364-00-00-066	HOSE SECTION	1
3.3	357-16-00-133	TOP PIPE HOLDER - 6"	1	8	R07671	7/16-14 UNC x 1.25 HEX BOLT GR.5	6
3.4	R07620	3/8-16 UNC x 1.5 HEX BOLT GR.5	2	9	R07879	7/16-14 UNC FLANGE NUT - ZINC	6
3.5	R07621	3/8-16 UNC x 2 HEX BOLT GR.5	1	10	R07622	3/8-16 UNC x 2.5 HEX BOLT GR.5	2
3.6	R07794	3/8-16 UNC FLANGE NUT - ZINC	3	11	R07794	3/8-16 UNC FLANGE NUT - ZINC	7
4	364-25-00-000	DISCHARGE PIPE END SECTION ASSY	1	12	R07619	3/8-16 UNC x 1 HEX BOLT GR.5	5

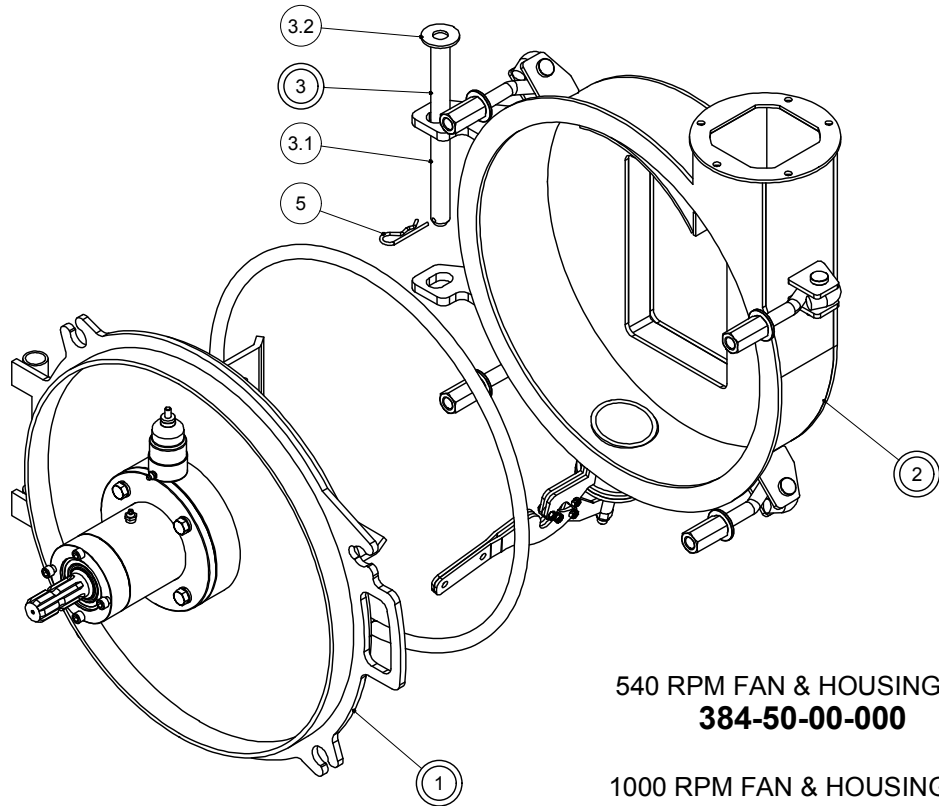
18000L SL 8" DISCHARGE PIPE KIT



**18000L SL 8" DISCHARGE PIPE KIT
394-06-00-000**

PARTS LIST				PARTS LIST			
ITEM	PART NUMBER	DESCRIPTION	QTY	ITEM	PART NUMBER	DESCRIPTION	QTY
1	394-06-01-000	8" DISCHARGE PIPE ASSY	1	4.2	357-17-01-000	PIPE HOLDER ASSY - 8"	1
1.1	394-06-01-071	8" HORIZ. DISCHARGE PIPE	1	4.2.1	357-16-02-137	UPPER STUB	1
1.2	394-06-01-054	8" VERTICAL DISCHARGE PIPE	1	4.2.2	357-17-00-135	TOP PIPE HOLDER - 8"	1
1.3	358-92-02-524	DISCHARGE ELBOW PC	1	4.3	357-17-00-135	TOP PIPE HOLDER - 8"	1
1.4	358-92-02-306	8" DISCHARGE FLANGE	1	4.5	R07620	3/8-16 UNC x 1.5 HEX BOLT GR.5	2
2	358-92-03-000	8" EXTENSION PIPE ASSY	1	4.4	R07621	3/8-16 UNC x 2 HEX BOLT GR.5	1
2.1	358-92-03-307	8" EXTENSION PIPE	1	4.6	R07794	3/8-16 UNC FLANGE NUT - ZINC	3
2.2	358-92-02-306	8" DISCHARGE FLANGE	1	5	358-92-00-329	8" DISCHARGE HOSE	1
3	358-92-04-000	8" SPLASH PLATE ASSY	1	6	358-92-01-000	8" HOUSING RING & TUBE ASSY	1
3.1	358-92-04-308	8" SPLASH PLATE	1	6.1	358-92-01-302	8" HOUSING OUTLET TUBE	1
3.2	358-92-04-309	8" SPLASH PLATE TUBE	1	6.2	358-92-01-301	8" HOUSING DISCHARGE RING	1
3.3	358-92-04-310	WING FOR 8" SPLASH PLATE	2	7	R02484	8" SUCTION HOSE CLAMP	2
3.4	358-92-04-311	CLAMPING TUBE BRKT	2	8	R07619	3/8-16 UNC x 1 HEX BOLT GR.5	5
4	357-17-00-000	8" DISCHARGE PIPE HOLDER KIT	3	9	R07671	7/16-14 UNC x 1.25 HEX BOLT GR.5	6
4.1	357-16-01-000	DISCHARGE PIPE BASE HOLDER ASSY	1	10	R07879	7/16-14 UNC FLANGE NUT - ZINC	11
4.1.1	357-16-01-130	BASE PLATE	1	11	R07622	3/8-16 UNC x 2.5 HEX BOLT GR.5	2
4.1.2	357-16-01-131	LOWER STUB	1	12	R07794	3/8-16 UNC FLANGE NUT - ZINC	2

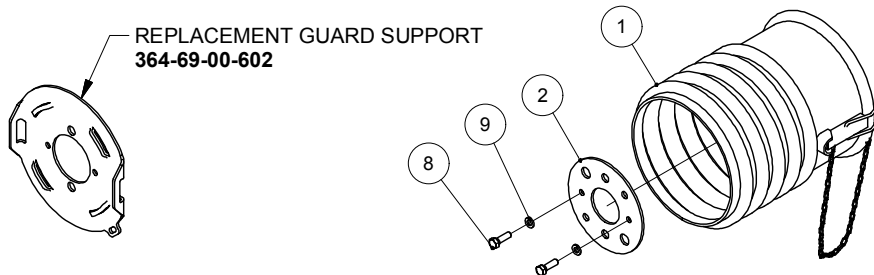
FAN & HOUSING COMPLETE-TAPERED SHAFT



**540 RPM FAN & HOUSING KIT
384-50-00-000**

**1000 RPM FAN & HOUSING KIT
384-51-00-000**

PARTS LIST				PARTS LIST			
ITEM	PART NUMBER	DESCRIPTION	QTY	ITEM	PART NUMBER	DESCRIPTION	QTY
1	384-50-01-000	540 RPM FAN & COVER PLATE -TAPERED SHAFT	1	3	376-02-04-000	LID PIN ASSY	1
				3.1	376-02-04-508	LID PIN	1
	384-51-00-000	1000 RPM FAN & COVER PLATE -TAPERED SHAFT	1	3.2	R07827	3/4 FLAT WASHER STD - ZINC	1
				5	R07948	5/32 HAIR PIN	1
2	384-20-01-000	HOUSING ASSY-CHT(2007)	1	6	R08368	3/8-16 UNC x 2.25 SHCS - BLK	2

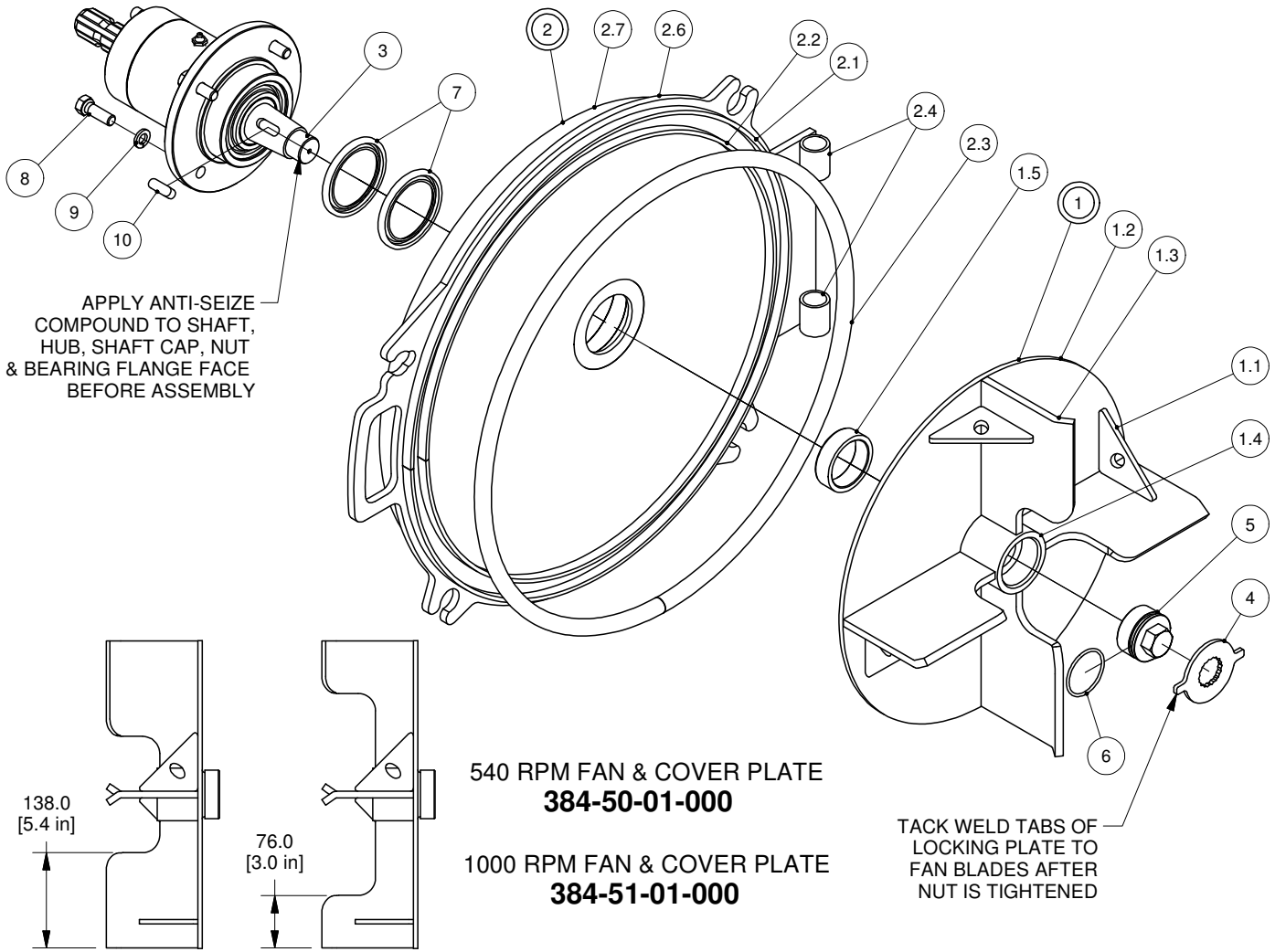


REPLACEMENT GUARD SUPPORT
364-69-00-602

**PLASTIC PTO GUARD KIT
364-69-00-000**

PARTS LIST				PARTS LIST			
ITEM	PART NUMBER	DESCRIPTION	QTY	ITEM	PART NUMBER	DESCRIPTION	QTY
1	R22196	SHEILD CONE ASSY	1	8	R07611	5/16-18 UNC x 1 HEX BOLT GR.5	2
2	364-00-00-448	PTO GUARD SUPPORT	1	9	R07802	5/16 LOCK WASHER - ZINC	2

COVER PLATE-TAPERED SHAFT



APPLY ANTI-SEIZE COMPOUND TO SHAFT, HUB, SHAFT CAP, NUT & BEARING FLANGE FACE BEFORE ASSEMBLY

TACK WELD TABS OF LOCKING PLATE TO FAN BLADES AFTER NUT IS TIGHTENED

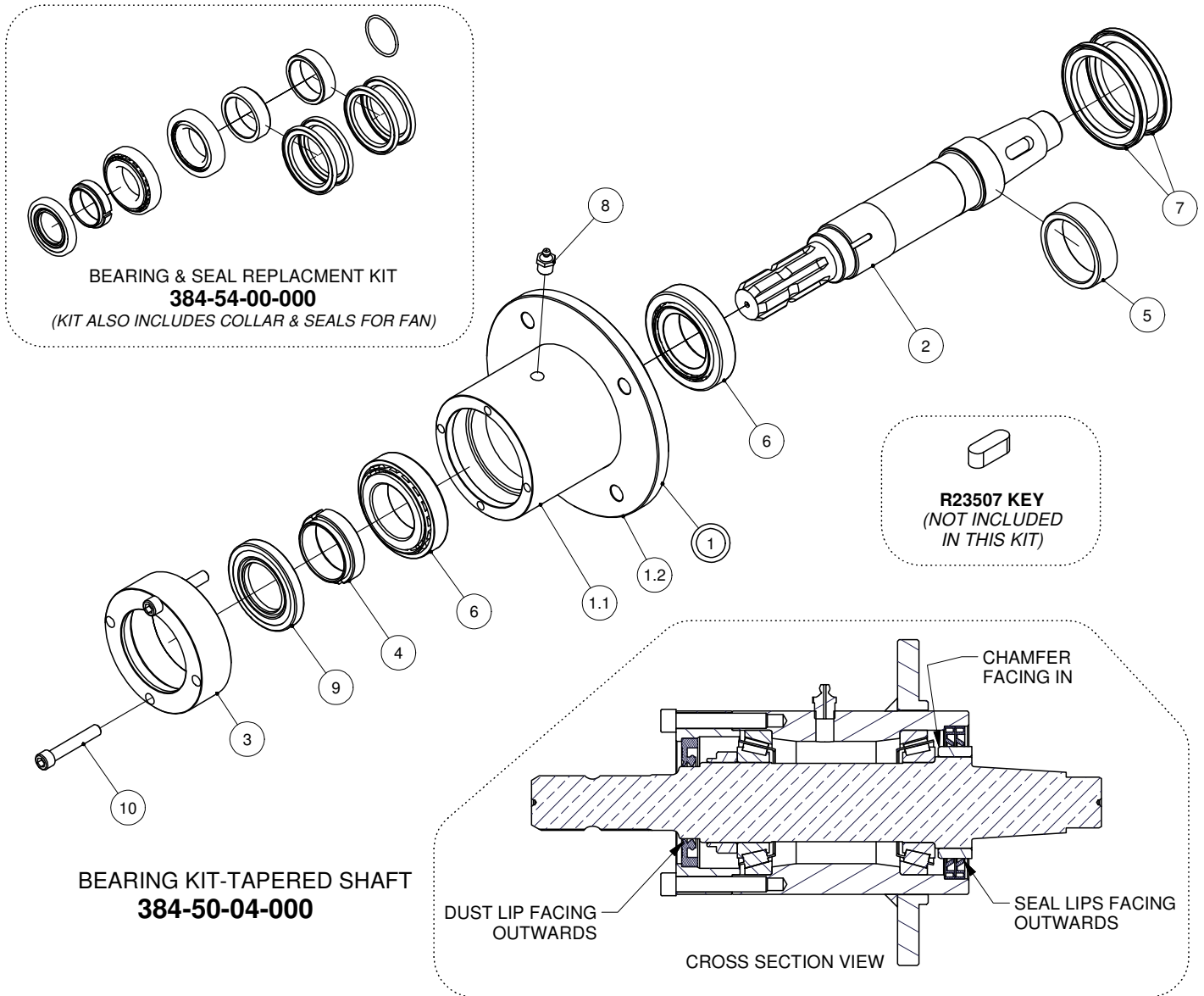
**540 RPM FAN & COVER PLATE
384-50-01-000**

**1000 RPM FAN & COVER PLATE
384-51-01-000**

- NOTES:
- ALWAYS GREASE SEALS AND SHAFT COLLAR BEFORE INSTALLATION
 - ENSURE SEAL LIPS DO NOT "FOLD OVER" DURING ASSEMBLY

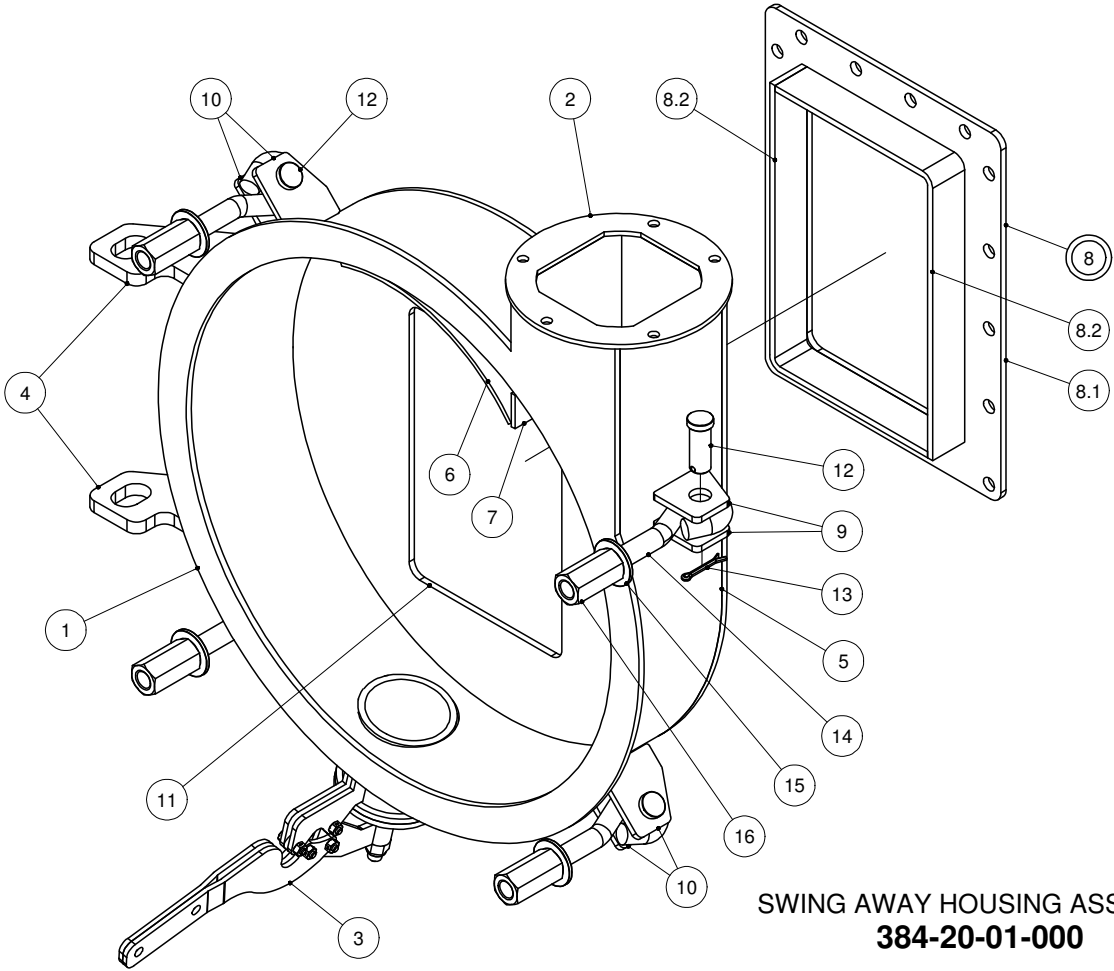
PARTS LIST				PARTS LIST			
ITEM	PART NUMBER	DESCRIPTION	QTY	ITEM	PART NUMBER	DESCRIPTION	QTY
1	384-50-02-000	TAPERED HUB FAN ASSY - 540 RPM CHT	1	2.5	384-50-03-642	MOTOR & BEARING BOX MOUNT	1
	384-51-02-000	TAPERED HUB FAN ASSY-1000 RPM CHT	1	2.6	384-50-03-641	COVER PLATE-TAPERED SHAFT	1
1.1	364-72-00-422	FAN BLADE GUSSET	4	2.7	384-27-02-534	REIN. RING-1000 RPM COVER PLATE	1
1.2	384-33-03-417	FAN BACK PLATE	1	3	384-50-04-000	BEARING KIT 1-3/8"-6T - TAPERED SHAFT	1
1.3	384-33-03-419	CHT 540 RPM FAN BLADE	4	4	384-50-01-647	TAPERED HUB LOCKING PLATE	1
1.4	384-50-02-639	TAPERED IMPELLER HUB	1	5	384-50-01-648	TAPERED SHAFT CAP NUT	1
1.5	R23443	HARDENED SEAL COLLAR - 2.75" OD	1	6	R23444	O-RING #226 - 2.25" OD x 2" ID	1
2	384-50-03-000	COVER PLATE ASSY - TAPERED SHAFT	1	7	R23441	GREASE SEAL HM21 - 2.750" x 3.751" x .25"	2
2.1	384-20-03-295	OUTER RING	1	8	R07638	1/2-13 UNC x 1.5 HEX BOLT GR.5	4
2.2	384-20-03-296	INNER RING	1	9	R07805	1/2 LOCK WASHER - ZINC	4
2.3	384-20-00-301	RUBBER SEAL	1	10	R23507	MACHINE KEY - 7/16" SQ x 1-1/4"	1
2.4	384-20-03-570	HATCH PIN SLEEVE	2				

BEARING KIT-TAPERED SHAFT



PARTS LIST			
ITEM	PART NUMBER	DESCRIPTION	QTY
1	384-50-05-000	BEARING TUBE ASSY-TAPERED SHAFT	1
1.1	384-50-05-643	TAPERED SHAFT BEARING TUBE	1
1.2	384-50-05-644	BEARING TUBE FLANGE	1
2	384-50-04-637	TAPERED FAN SHAFT - 1-3/8"-6T	1
3	384-50-04-645	TAPERED SHAFT BEARING TUBE CAP	1
4	384-50-04-646	STAKE NUT - M50-1.5	1
5	R23443	HARDENED SEAL COLLAR - 2.75" OD	1
6	R23429	TAPERED ROLLER BEARING - 50 x 90 x 21.75	2
7	R23441	GREASE SEAL HM21 - 2.750" x 3.751" x .25"	2
8	R08188	1/4" NPT STRAIGHT GREASE FTG	1
9	R23442	SEAL D.L. - 45 x 80 x 10 HMSA10 RG	1
10	R08368	3/8-16 UNC x 2.25 SHCS - BLK	2

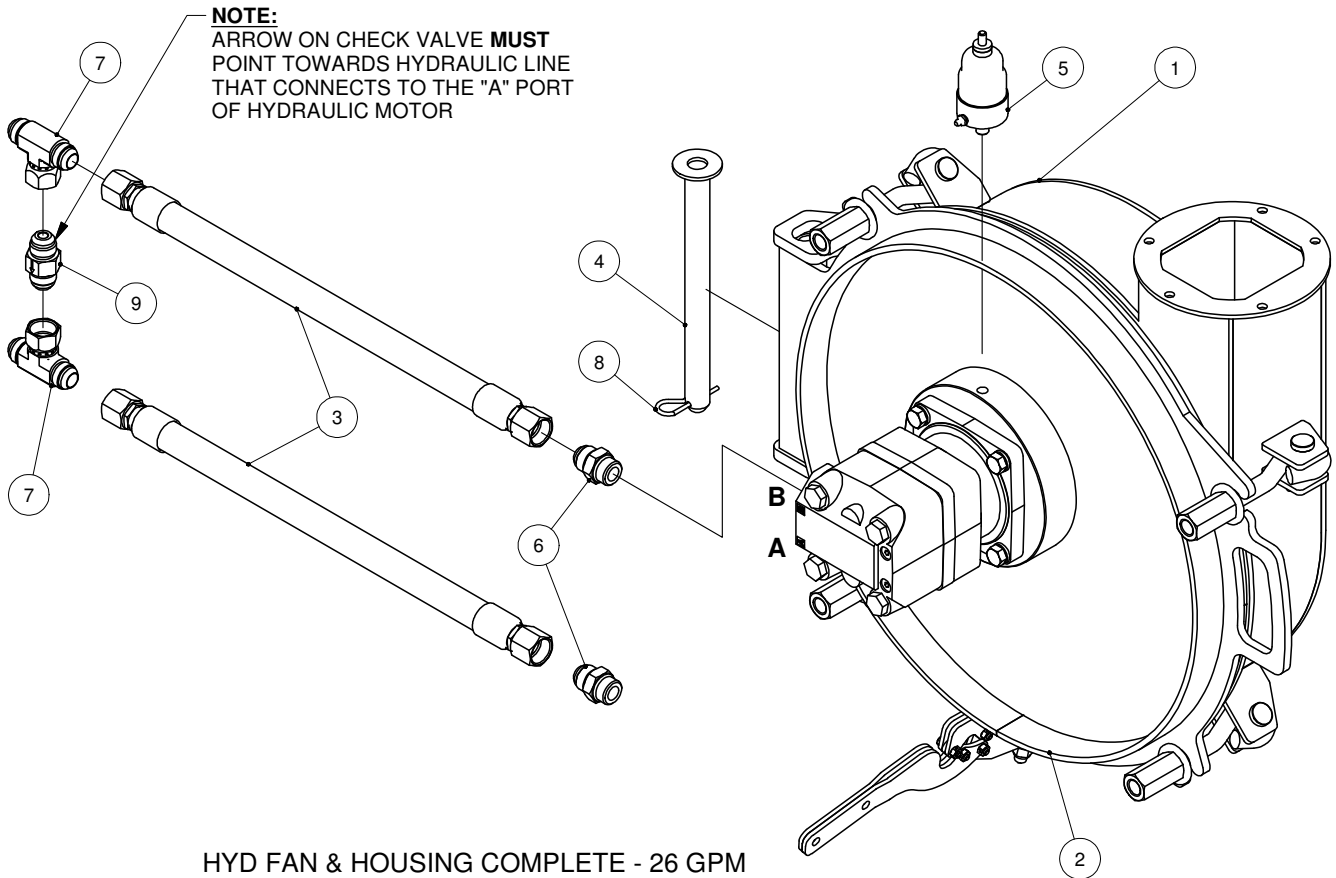
SWING AWAY HOUSING ASSY-CHT



SWING AWAY HOUSING ASSY-CHT
384-20-01-000

PARTS LIST			
ITEM	PART NUMBER	DESCRIPTION	QTY
1	384-20-01-289	HOUSING FLANGE	1
2	364-01-03-376	DISCHARGE RING	1
3	364-62-00-000	DRAIN PLUG KIT	1
4	384-20-01-290	DOOR HINGE	2
5	357-48-01-232	CHT HOUSING BAND	1
6	357-48-01-231	CHT HOUSING BAND AID	1
7	357-48-01-230	CHT FAN HOUSING VERTICAL PC	1
8	357-48-02-000	CHT HOUSING INLET FLANGE ASSY	1
8.1	364-81-02-393	HOUSING FLANGE	1
8.2	357-48-02-233	CHT INLET EXTENSION	2
9	384-20-01-424	SHORT HOUSING LUG	2
10	384-20-01-423	HOUSING LUG	6
11	357-48-01-228	CHT HOUSING BACK PLATE	1
12	R08443	EYE BOLT PIN	4
13	R08207	5/32 x 1 1/2 COTTER PIN - SS	4
14	R08442	3/4" EYE BOLT	4
15	376-02-00-577	MANWAY WASHER	4
16	R07800	3/4-10 UNC COUPLING NUT - ZINC	4

HYD FAN & HOUSING COMPLETE -TAPERED SHAFT 26 GPM



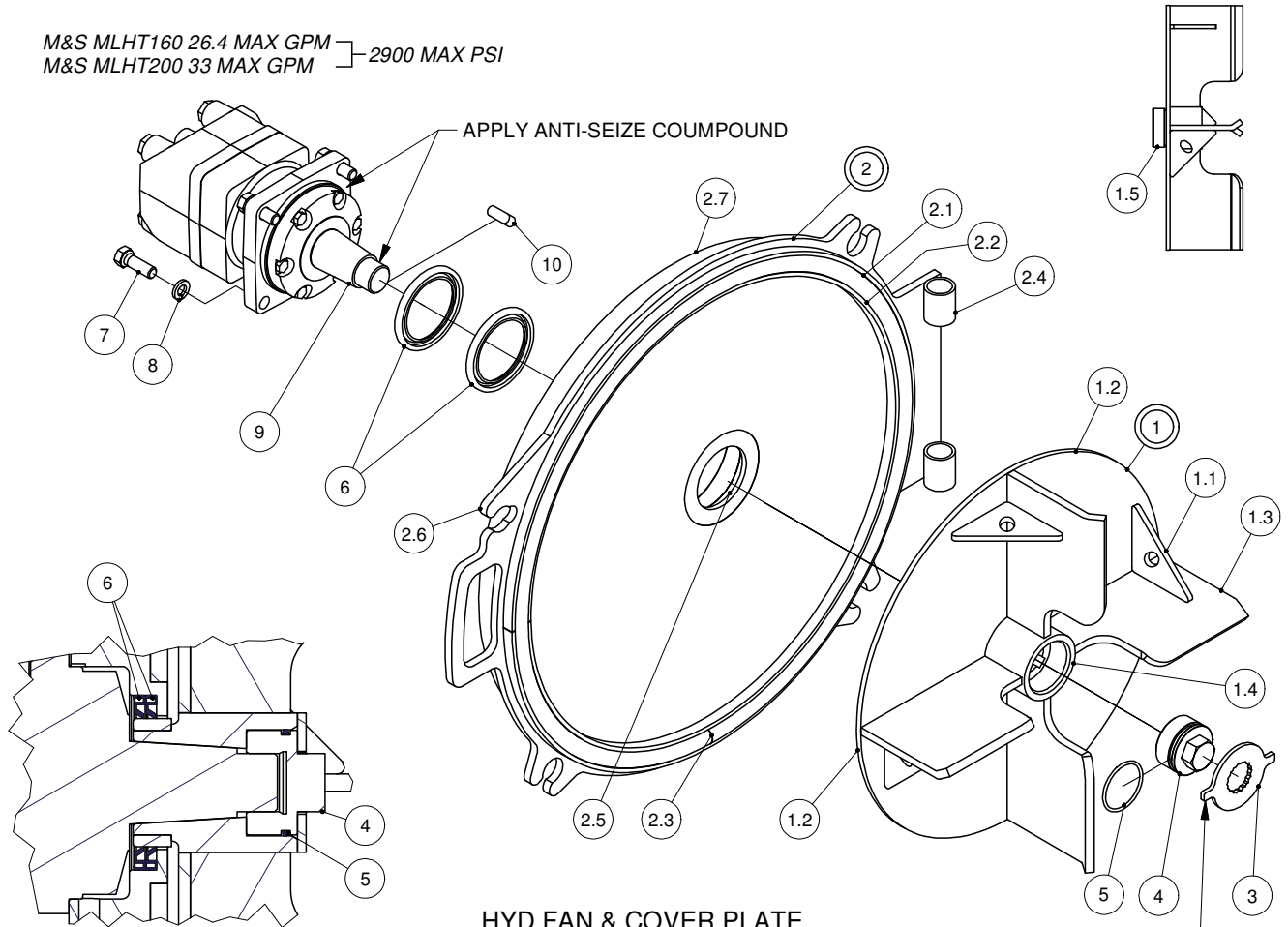
HYD FAN & HOUSING COMPLETE - 26 GPM
384-52-00-000

R23512
REPLACEMENT SEAL KIT FOR MLHT160T4A
HYD MOTOR w/ TAPERED SHAFT

PARTS LIST			
ITEM	PART NUMBER	DESCRIPTION	QTY
1	384-20-01-000	HOUSING ASSY-CHT(2007)	1
2	384-52-01-000	HYD FAN & COVER PLATE-TAPERED SHAFT-26 GPM	1
3	384-35-03-000	3/4" HYDRAULIC HOSE ASSY	2
4	376-02-04-000	LID PIN ASSY	1
5	R10595	SPRING PRESSURE AUTO GREASE CUP	1
6	R23098	ORB-12 x 3/4" JIC M. ADAPTOR	2
7	R23122	3/4" M. x 3/4" M. x 3/4" SW F. JIC TEE	2
8	R07948	5/32 HAIR PIN	1
9	R23447	3/4" M. JIC CHECK VALVE	1

HYD FAN & COVER PLATE-TAPERED SHAFT

M&S MLHT160 26.4 MAX GPM } 2900 MAX PSI
 M&S MLHT200 33 MAX GPM }



SEAL DETAIL
 SEAL LIP MUST FACE
 AWAY FROM HYD MOTOR

HYD FAN & COVER PLATE
384-52-01-000 - 26 GPM

HYD FAN & COVER PLATE
384-55-01-000 - 33 GPM

TACK WELD TABS
 OF LOCKING PLATE
 TO FAN BLADES AFTER
 NUT HAS BEEN TIGHTENED

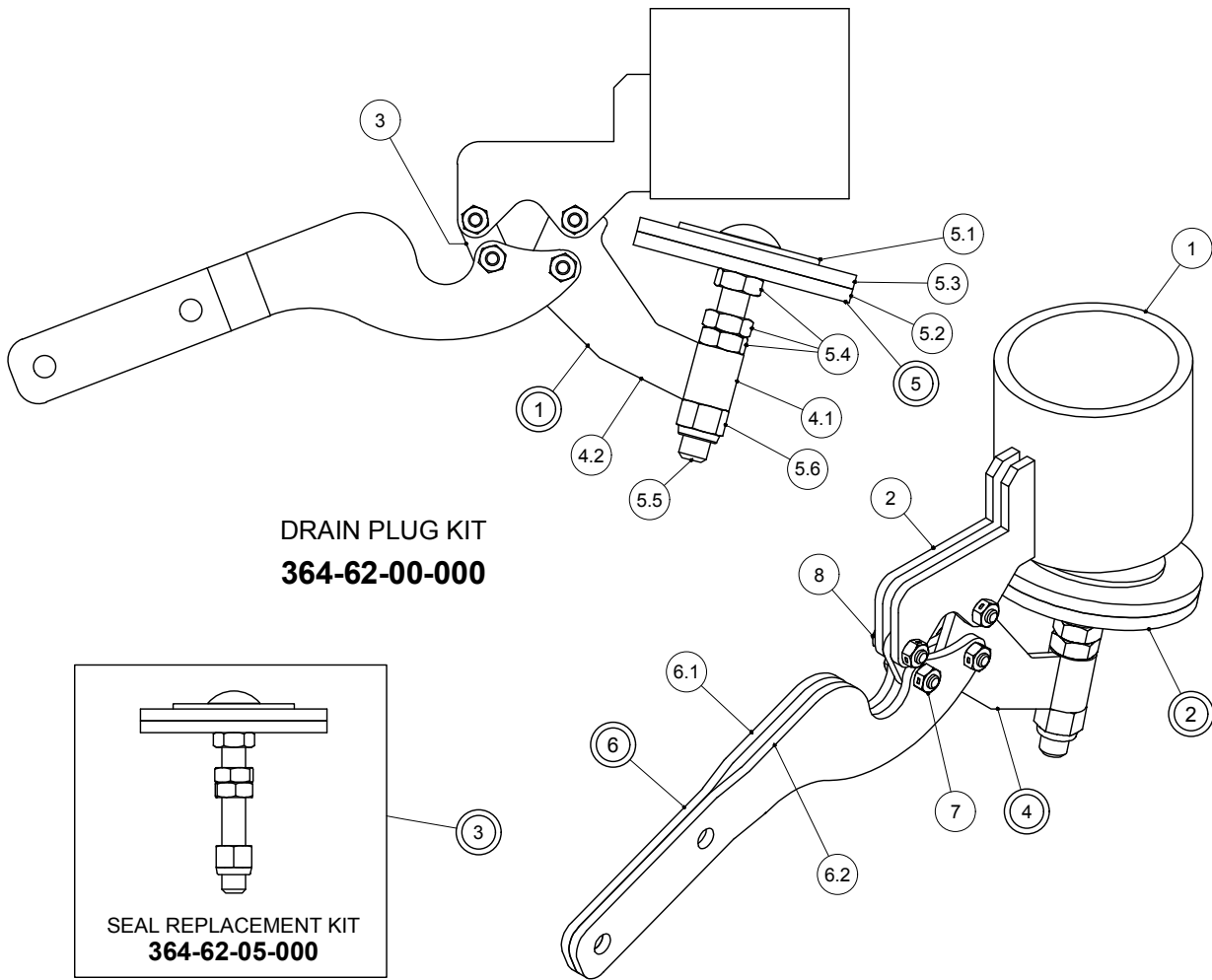
R23512
 REPLACEMENT SEAL KIT FOR MLHT160/200T4A
 HYD MOTOR W/ TAPERED SHAFT

NOTES:

- ALWAYS GREASE SEALS AND SHAFT COLLAR BEFORE INSTALLATION
- ENSURE SEAL LIPS DO NOT "FOLD OVER" DURING ASSEMBLY

PARTS LIST				PARTS LIST			
ITEM	PART NUMBER	DESCRIPTION	QTY	ITEM	PART NUMBER	DESCRIPTION	QTY
1	384-50-02-000	TAPERED HUB FAN ASSY - 540 RPM CHT	1	2.7	384-27-02-534	REIN. RING-1000 RPM COVER PLATE	1
1.1	364-72-00-422	FAN BLADE GUSSET	4	3	384-50-01-647	TAPERED HUB LOCKING PLATE	1
1.2	384-33-03-417	FAN BACK PLATE	1	4	384-50-01-648	TAPERED SHAFT CAP NUT	1
1.3	384-33-03-419	CHT 540 RPM FAN BLADE	4	5	R23444	O-RING #226 - 2.25" OD x 2" ID	1
1.4	384-50-02-639	TAPERED IMPELLER HUB	1	6	R23441	GREASE SEAL HM21 - 2.750" x 3.751" x .25"	2
1.5	R23443	HARDENED SEAL COLLAR - 2.75" OD	1	7	R07638	1/2-13 UNC x 1.5 HEX BOLT GR.5	4
2	384-50-03-000	COVER PLATE ASSY - TAPERED SHAFT	1	8	R07805	1/2 LOCK WASHER - ZINC	4
2.1	384-20-03-295	OUTER RING	1	9	R23506	M+S HYD MOTOR-MLHT160 TAPERED SHAFT-26 GPM	1
2.2	384-20-03-296	INNER RING	1		R22590	M+S HYD MOTOR-MLHT200 TAPERED SHAFT-33 GPM	1
2.3	384-20-00-301	RUBBER SEAL	1				
2.4	384-20-03-570	HATCH PIN SLEEVE	2				
2.5	384-50-03-642	MOTOR & BEARING BOX MOUNT	1	10	R23507	MACHINE KEY - 7/16" SQ x 1-1/4"	1
2.6	384-50-03-641	COVER PLATE-TAPERED SHAFT	1				

DRAIN PLUG KIT



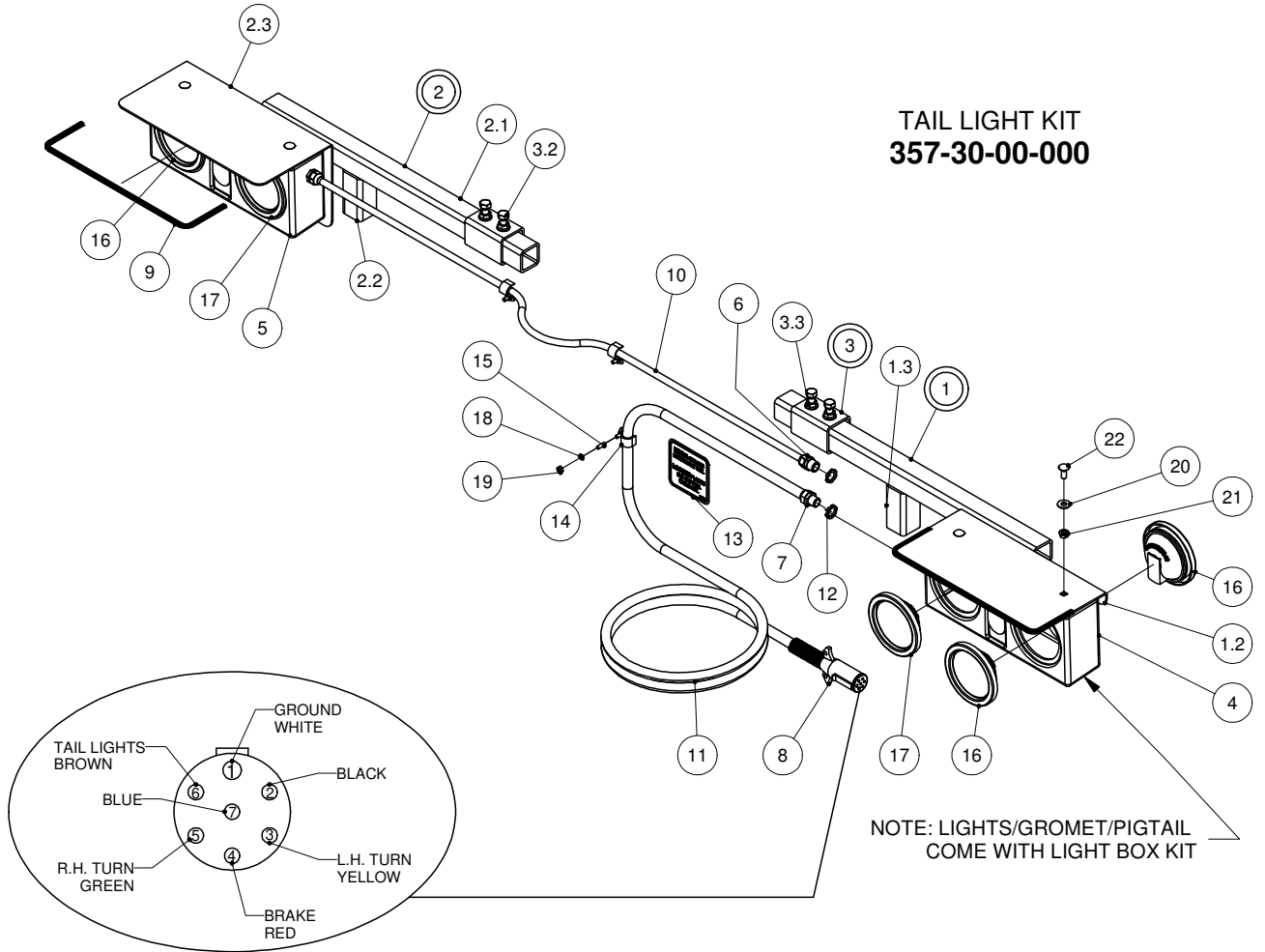
DRAIN PLUG KIT
364-62-00-000

SEAL REPLACEMENT KIT
364-62-05-000

PARTS LIST

ITEM	PART NUMBER	DESCRIPTION	QTY
1	364-01-03-110	DRAIN PIPE	1
2	364-62-00-199	PLUG HOUSING BRKT	2
3	364-62-00-205	SHORT LINKAGE	1
4	364-62-01-000	DRAIN PLUG SLEEVE ASSY	1
4.1	364-62-01-201	SLEEVE	1
4.2	364-62-01-200	SLEEVE LINKAGE	1
5	364-62-05-000	DRAIN PLUG REPLACEMENT KIT	1
5.1	364-62-04-370	PLUG WASHER	1
5.2	364-62-02-203	PLUG PLATE	1
5.3	R03071	DRAIN PLUG GASKET	1
5.4	R08046	1/2-13 UNC HEX JAM NUT - ZINC	3
5.5	R07748	1/2-13 UNC x 4 FULL THREAD CARRIAGE BOLT Gr.5	1
5.6	R08219	1/2-13 UNC NYLOCK NUT - ZINC	1
6	364-62-03-000	HANDLE ASSY	1
6.1	364-62-03-206	LH HANDLE	1
6.2	364-62-03-207	RH HANDLE	1
7	R08048	1/4-20 UNC 2-WAY LOCK NUT - ZINC	4
8	R08176	1/4 x 7/8 UNC SHOLDER HEX BOLT	4

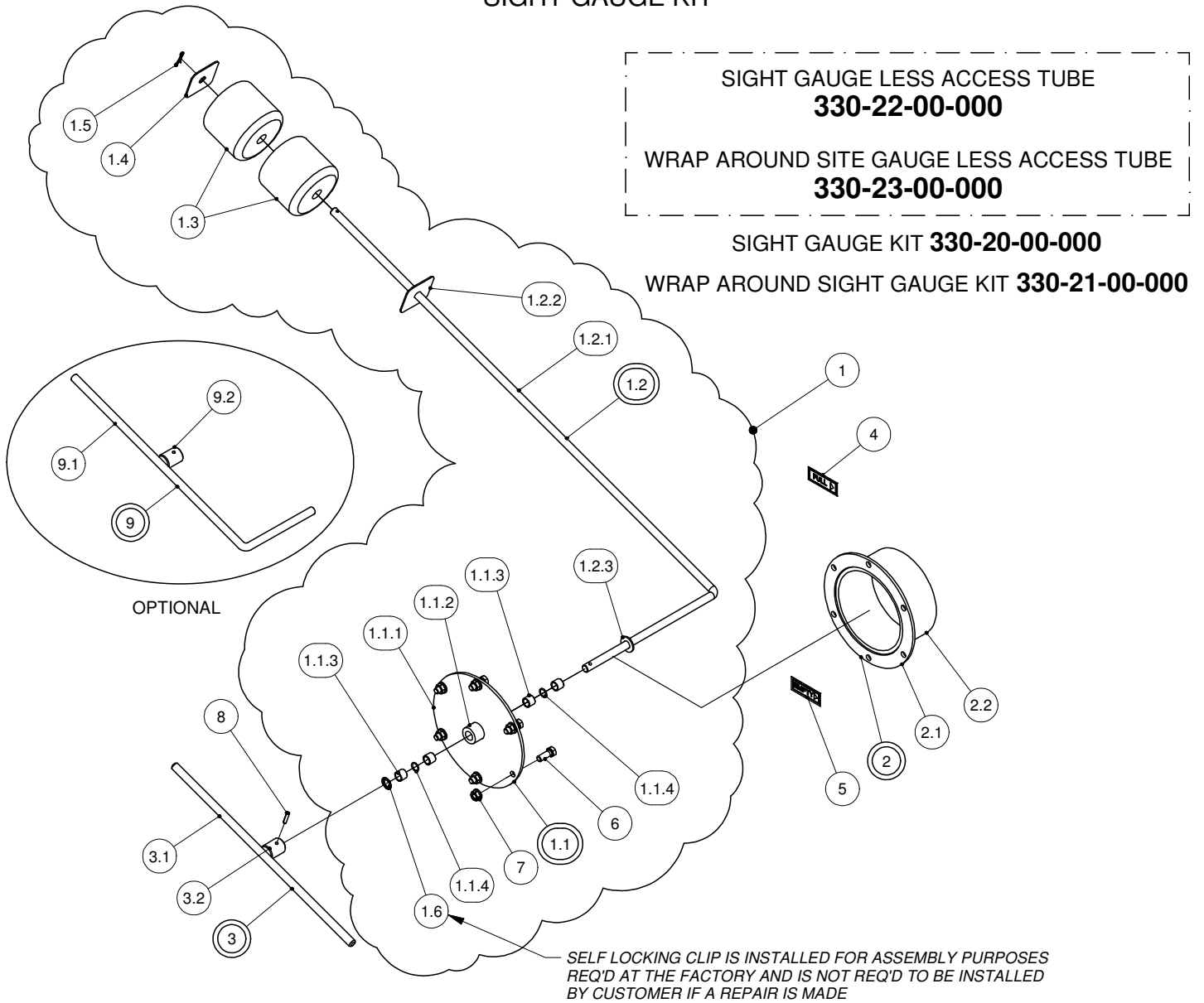
TAIL LIGHT KIT



WIRING DIAGRAM
FOR 7 POLE CONNECTOR

PARTS LIST				PARTS LIST			
ITEM	PART NUMBER	DESCRIPTION	QTY	ITEM	PART NUMBER	DESCRIPTION	QTY
1	357-30-01-000	RH LIGHT BAR ASSY	1	8	R10095	7 POLE CONNECTOR w/ STRAIN RELIEF	1
1.1	357-30-01-171	LIGHT BAR	1				
1.2	357-30-01-172	RH LITE BOLT PLATE	1	9	357-30-00-311	SAFETY EDGING	2
1.3	357-30-01-173	STUB BAR	1	10	R04046	4-WIRE TRAILER CABLE - APPROX. 4M	1
2	357-30-02-000	LH LIGHT BAR ASSY	1	11	R04235	14/6 TRAILER CABLE - APPROX. 10.5M	1
2.1	357-30-01-171	LIGHT BAR	1	12	R10345	1/2" ELECTRICAL BOX LOCK NUT	3
2.2	357-30-01-173	STUB BAR	1	13	R09808	CABLE - LIGHT BOX DECAL	1
2.3	357-30-02-245	LH LITE BOLT PLATE	1	14	R21104	HYD. HOSE CLIPS	11
3	357-30-03-000	MOUNT BRKT ASSY	2	15	R08329	1/4-20 UNC x 3/4" WELD STUD	12
3.1	357-30-03-174	MOUNT BRKT	1	16	R10588	4" YELLOW LED LIGHT KIT	4
3.2	R07674	1/2-13 UNC x 1.25 HEX BOLT GR.5	2	17	R10358	4" RED LED LIGHT KIT	2
3.3	R07795	1/2-13 UNC FLANGE NUT - ZINC	2	18	R07801	1/4 LOCK WASHER - ZINC	11
4	R10349	RH LAMP BOX W/NO LIGHTS	1	19	R07781	1/4-20 UNC HEX NUT - ZINC	11
5	R10348	LH LAMP BOX W/ NO LIGHTS	1	20	R07823	3/8 FLAT WASHER STD - ZINC	4
6	R10193	1/2" NYLON TITE CONNECTOR	2	21	R07794	3/8-16 UNC FLANGE NUT - ZINC	4
7	R10357	3/4" NYLON TITE CONNECTOR	1	22	R07721	3/8-16 UNC x 1 CARRIAGE BOLT Gr.5	4

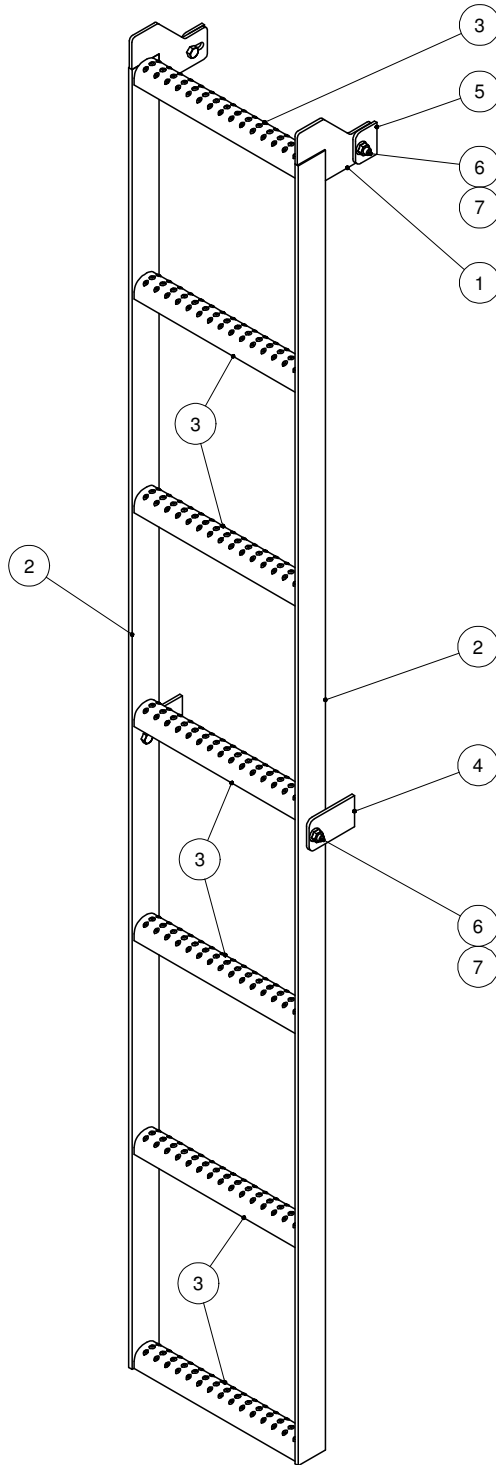
SIGHT GAUGE KIT



PARTS LIST				PARTS LIST			
ITEM	PART NUMBER	DESCRIPTION	QTY	ITEM	PART NUMBER	DESCRIPTION	QTY
1	330-22-01-000	SIGHT GAUGE w/o INDICATOR	1	2	330-20-03-000	ACCESS TUBE ASSY	1
1.1	330-20-04-000	COVER PLATE ASSY	1	2.1	330-20-03-560	ACCESS TUBE FLANGE	1
1.1.1	330-20-00-557	COVER PLATE	1	2.2	330-20-03-556	ACCESS TUBE	1
1.1.2	330-20-04-562	BUSHING HOLDER	1	3	330-20-02-000	INDICATOR ARM ASSY	1
1.1.3	R21173	1/2 x 5/8 x 1/2" BRONZE BUSHING	4	3.1	330-20-02-554	INDICATOR ARM	1
1.1.4	R20865	O-RING #11-014	2	3.2	330-20-02-553	INDICATOR ARM HUB	1
1.2	330-20-01-000	FLOAT ARM ASSY	1	4	R09529	"FULL" DECAL	1
1.2.1	330-20-01-551	FLOAT ARM	1	5	R09530	"EMPTY" DECAL	1
1.2.2	330-20-01-552	FLOAT STRAPS	1	6	R07619	3/8-16 UNC x 1 HEX BOLT GR.5	6
1.2.3	R08222	1/2 FLAT WASHER SAE - SS	1	7	R07794	3/8-16 UNC FLANGE NUT - ZINC	6
1.3	R09524	FLOAT	2	8	R08241	3/16 x 1 ROLL PIN - SS	1
1.4	330-20-01-552	FLOAT STRAPS	1	9	330-21-01-000	WRAP AROUND SITE ARM ASSY	1
1.5	R08021	1/8 x 1 S.S. COTTER PIN	1	9.1	330-19-46-546	WRAP AROUND SITE ARM	1
1.6	R08514	1/2" EXT. RETAINING RING	1	9.2	330-20-02-553	INDICATOR ARM HUB	1

SLIM LINE LADDER KIT

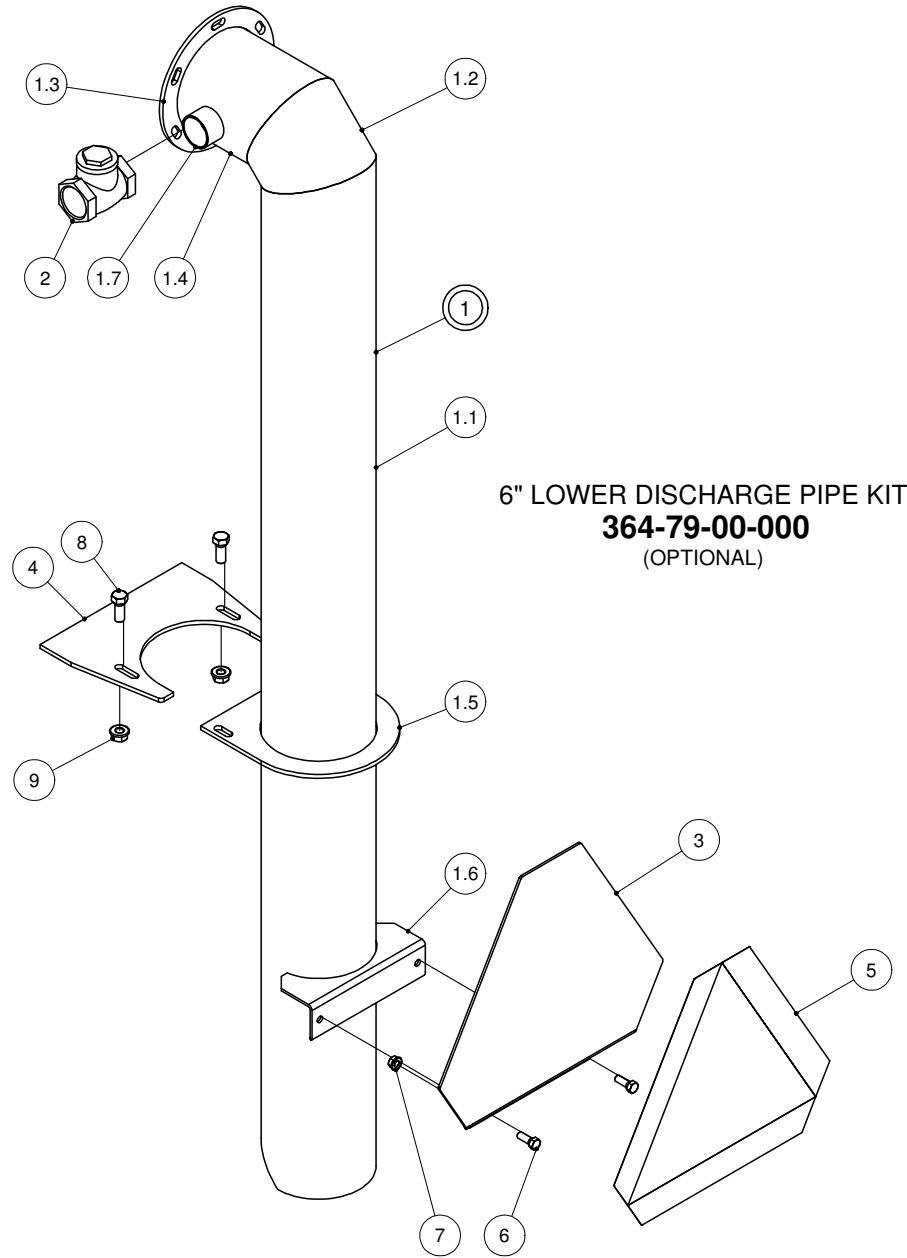
SLIM LINE LADDER KIT
394-07-00-000



PARTS LIST

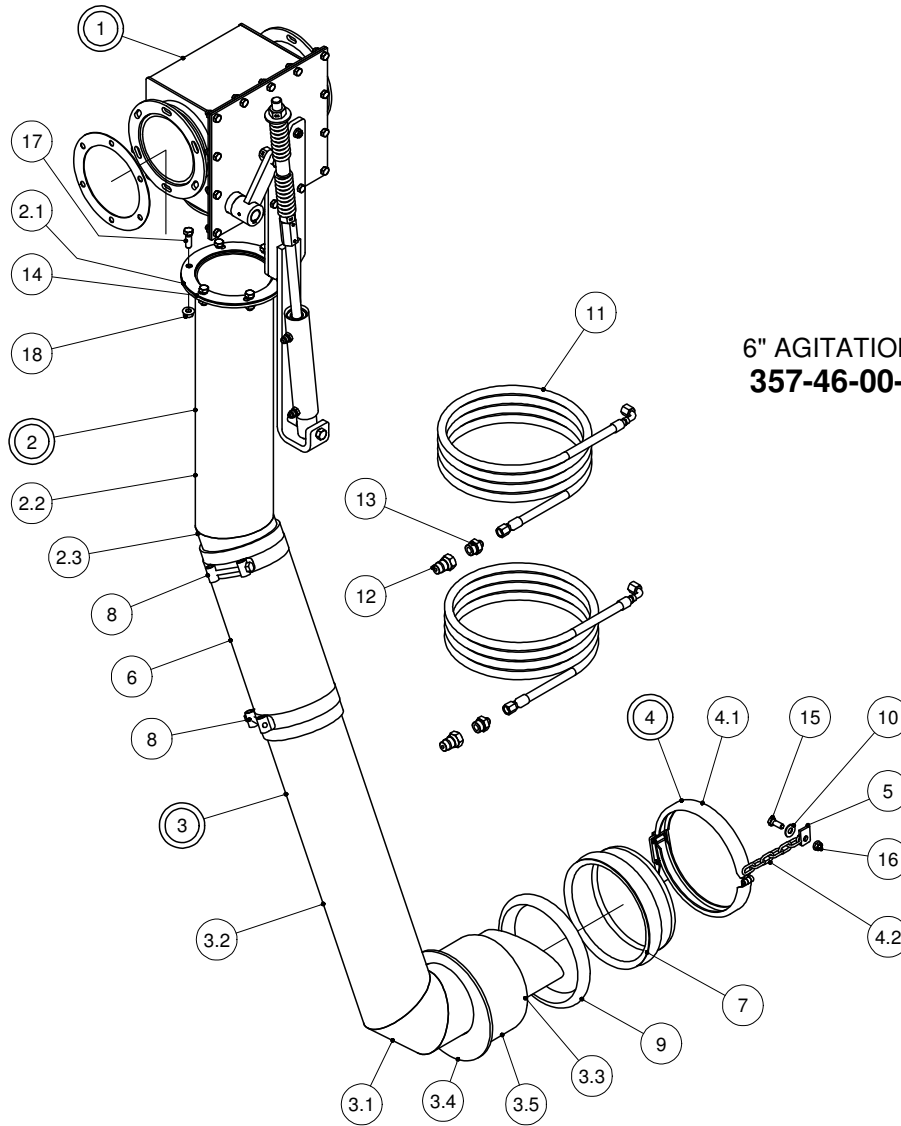
ITEM	PART NUMBER	DESCRIPTION	QTY
1	364-95-00-326	LADDER LUG	2
2	394-07-00-057	LADDER SIDE	2
3	364-95-00-324	LADDER RUNG	7
4	364-00-00-414	TANK LUG	2
5	364-95-00-327	UPPER TANK LUG	2
6	R07619	3/8-16 UNC x 1 HEX BOLT GR.5	4
7	R07794	3/8-16 UNC FLANGE NUT - ZINC	4

LOWER DISCHARGE PIPE KIT



PARTS LIST				PARTS LIST			
ITEM	PART NUMBER	DESCRIPTION	QTY	ITEM	PART NUMBER	DESCRIPTION	QTY
1	364-79-01-000	6" DROP PIPE ASSY-15000 PROFILE TANK	1	2	R02490	1 1/2" CHECK VALVE	1
1.1	364-79-01-295	LONG DROP PIPE	1	3	200-00-00-132	S.M.V. SIGN HOLDER	1
1.2	364-19-00-082	DISCHARGE PIPE CORNER PC	1	4	384-05-03-070	TANK BRKT	1
1.3	364-19-00-087	DISCHARGE PIPE FLANGE	1	5	R09501	SLOW MOVING VEHICLE DECAL	1
1.4	364-79-01-296	SHORT HORIZONTAL PIPE	1	6	R07619	3/8-16 UNC x 1 HEX BOLT GR.5	2
1.5	384-05-02-069	TUBE ATTACHMENT BRKT	1	7	R07794	3/8-16 UNC FLANGE NUT - ZINC	2
1.6	308-77-00-226	S.M.V. SIGN HOLDER	1	8	R07674	1/2-13 UNC x 1.25 HEX BOLT GR.5	2
1.7	R02127	1 1/2 CLOSE NIPPLE	1	9	R07795	1/2-13 UNC FLANGE NUT - ZINC	2

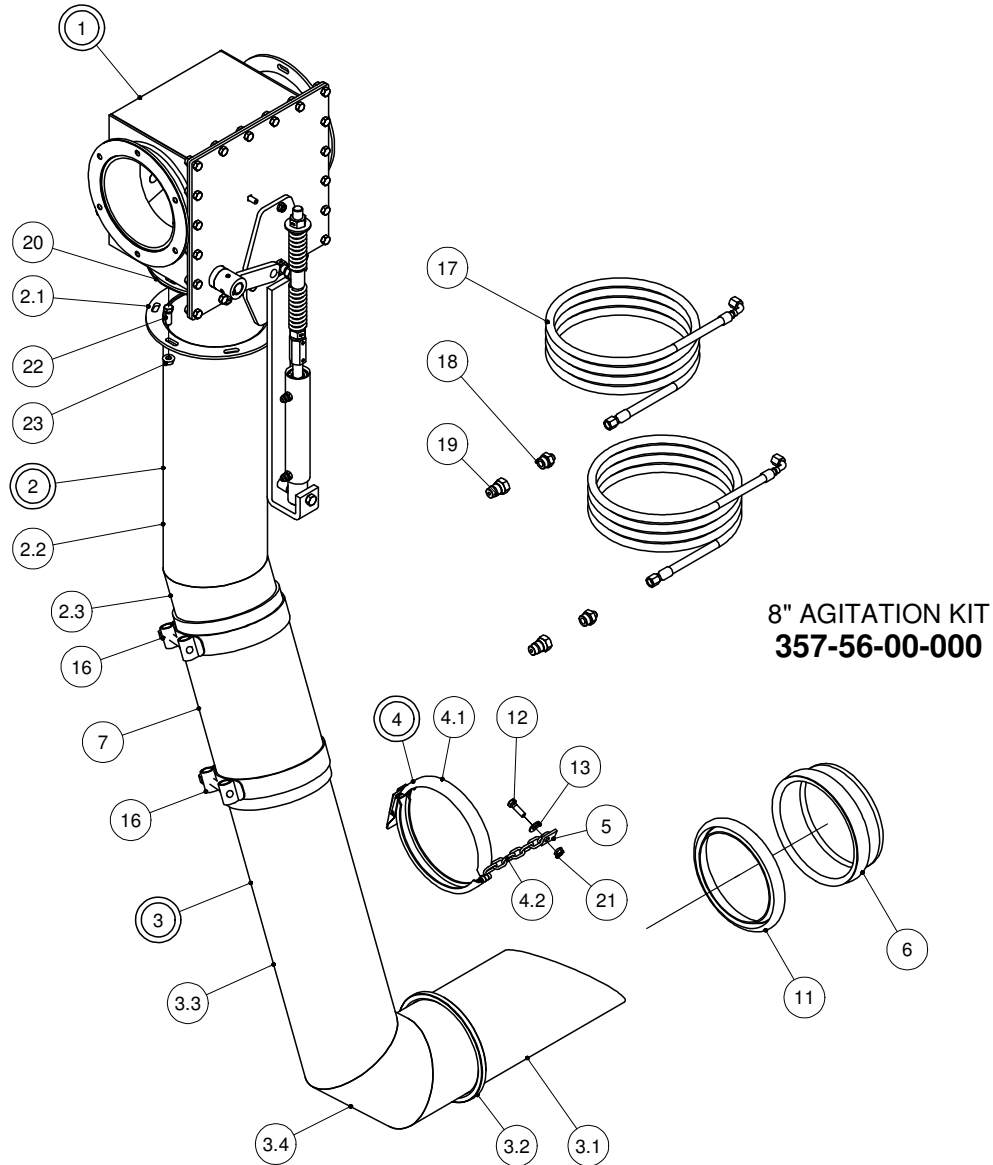
6" AGITATION KIT



**6" AGITATION KIT
357-46-00-000**

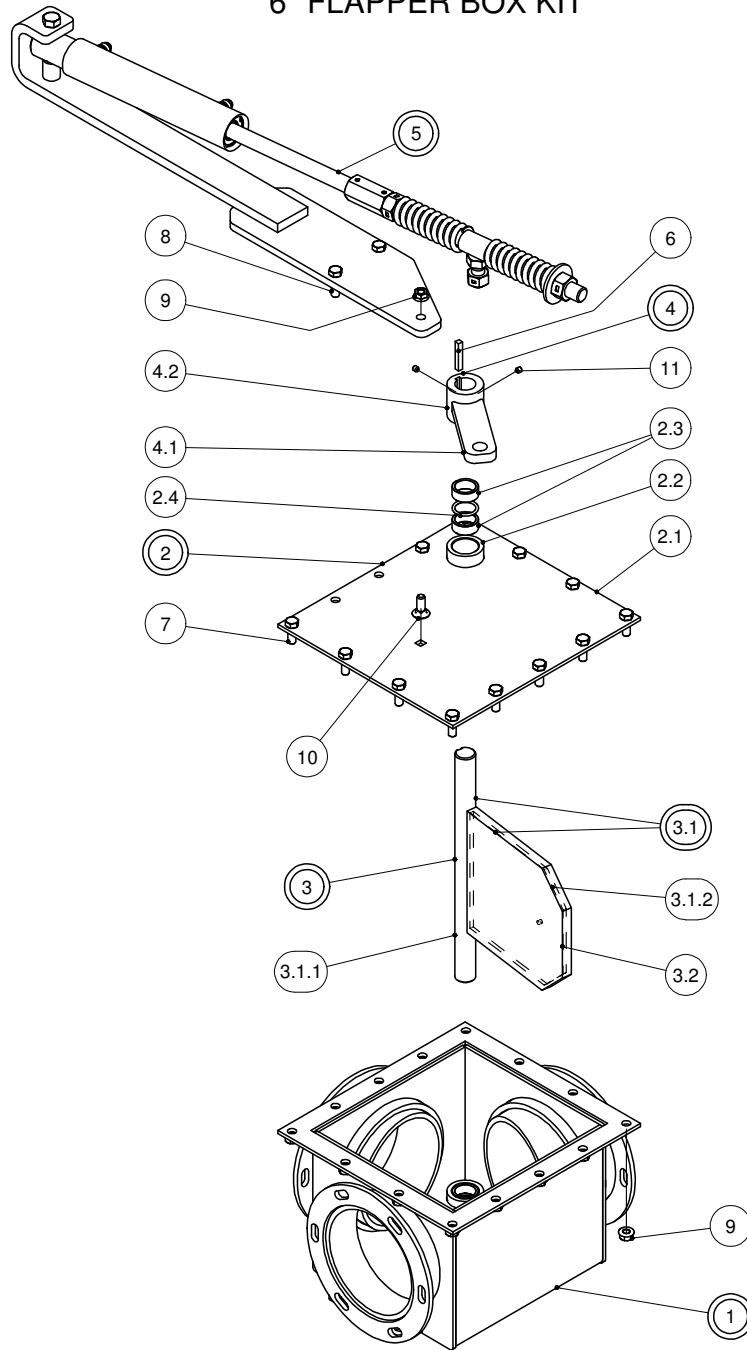
PARTS LIST				PARTS LIST			
ITEM	PART NUMBER	DESCRIPTION	QTY	ITEM	PART NUMBER	DESCRIPTION	QTY
1	364-57-00-000	6" FLAPPER VALVE KIT-HORIZONTAL	1	6	357-46-00-222	FLEX HOSE	1
2	357-46-07-000	EXTENSION PIPE ASSY	1	7	395-08-00-051	8" DRAIN PIPE	1
2.1	364-19-00-087	DISCHARGE PIPE FLANGE	1	8	R02482	6" HOSE CLAMP	2
2.2	357-46-07-354	EXTENSION PIPE	1	9	R02863	8" CL GASKET	1
2.3	357-46-07-355	EXTENSION PIPE	1	10	R07823	3/8 FLAT WASHER STD - ZINC	1
3	357-46-08-000	AGITATOR PIPE ASSY	1	11	357-46-09-000	HYD HOSE ASSY-TRACTOR TO INSIDE AGITATION	2
3.1	1521662-PART-16	DISCHARGE PIPE CORNER PC	1			COILED	
3.2	357-46-08-356	AGITATOR PIPE	1	12	R23182	MALE PIONEER TIP-ORB-10	2
3.3	357-46-08-357	AGITATOR PIPE BOTTOM PC	1	13	R23094	ORB-10 x 3/8" JIC M ADAPTOR	2
3.4	357-46-08-358	ADAPTOR FLANGE	1	14	R03068	6" DISCHARGE PIPE GASKET	2
3.5	395-08-04-052	DRAIN PLUG	1	15	R07619	3/8-16 UNC x 1 HEX BOLT GR.5	1
4	244-09-00-000	8" CLAMP & CHAIN ASSY	1	16	R07794	3/8-16 UNC FLANGE NUT - ZINC	1
4.1	R02488	8" RINGLOCK CLAMP	1	17	R07671	7/16-14 UNC x 1.25 HEX BOLT GR.5	6
4.2	250-97-00-297	CLAMP CHAIN	1	18	R07879	7/16-14 UNC FLANGE NUT - ZINC	6
5	250-96-00-298	CHAIN LUG	1				

8" AGITATION KIT



PARTS LIST				PARTS LIST			
ITEM	PART NUMBER	DESCRIPTION	QTY	ITEM	PART NUMBER	DESCRIPTION	QTY
1	386-13-00-000	8" FLAPPER BOX KIT W/ HYD CYL.	1	6	395-08-00-051	8" DRAIN PIPE	1
2	357-56-07-000	FLANGE EXTENSION ASSY	1	7	357-56-00-279	8" FLEX HOSE	1
2.1	358-92-02-306	8" DISCHARGE FLANGE	1	11	R02863	8" CL GASKET	1
2.2	357-56-07-360	EXTENSION PIPE	1	12	R07675	3/8-16 UNC x 1.25 HEX BOLT GR.5	1
2.3	357-56-07-361	SHORT EXTENSION PIPE	1	13	R07823	3/8 FLAT WASHER STD - ZINC	1
3	357-56-08-000	8" AGITATOR PIPE ASSY	1	16	R02484	8" SUCTION HOSE CLAMP	2
3.1	357-56-02-281	AGITATOR BASE PC	1	17	357-46-09-000	HYD HOSE ASSY-TRACTOR TO INSIDE AGITATION	2
3.2	244-08-00-307	CLAMP RING	1	18	R23094	ORB-10 x 3/8" JIC M ADAPTOR	2
3.3	357-56-08-362	AGITATOR PIPE	1	19	R23182	MALE PIONEER TIP-ORB-10	2
3.4	386-05-09-140	DISCHARGE MID PC	1	20	R03069	8" DISCHARGE PIPE GASKET	2
4	244-09-00-000	8" CLAMP & CHAIN ASSY	1	21	R07794	3/8-16 UNC FLANGE NUT - ZINC	1
4.1	R02488	8" RINGLOCK CLAMP	1	22	R07671	7/16-14 UNC x 1.25 HEX BOLT GR.5	6
4.2	250-97-00-297	CLAMP CHAIN	1	23	R07879	7/16-14 UNC FLANGE NUT - ZINC	6
5	250-96-00-298	CHAIN LUG	1				

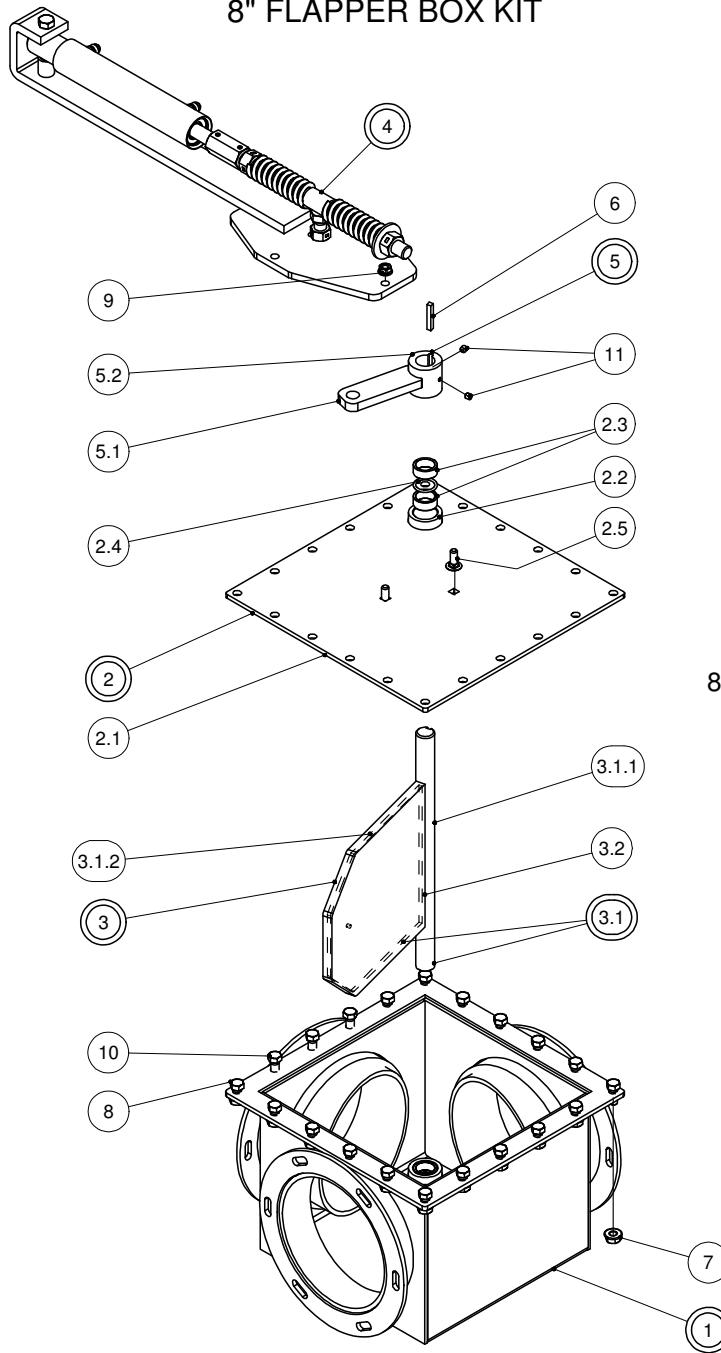
6" FLAPPER BOX KIT



6" FLAPPER BOX KIT
364-57-00-000

PARTS LIST				PARTS LIST			
ITEM	PART NUMBER	DESCRIPTION	QTY	ITEM	PART NUMBER	DESCRIPTION	QTY
1	364-58-02-000	MAIN BODY ASSY	1	4	364-58-11-000	FLAPPER BRKT ASSY	1
2	364-58-03-000	COVER PLATE ASSY	1	4.1	364-58-11-321	BRKT ARM	1
2.1	364-58-03-267	COVER PLATE	1	4.2	364-58-11-322	ARM BRKT SLEEVE	1
2.2	364-58-02-266	BUSHING SLEEVE	1	5	364-58-17-000	6" CYLINDER & BRKT KIT-HORIZONTAL STYLE	1
2.3	R20266	1 1/4 OD x 1 ID x 1/2 LONG BUSHING	2	6	364-58-08-323	KEY	1
2.4	R20859	O RING 1 x 1 1/4 x 1/8"	1	7	R07619	3/8-16 UNC x 1 HEX BOLT GR.5	12
3	364-58-01-000	FLAPPER ASSY COMPLETE w/ URETHANE	1	8	R07675	3/8-16 UNC x 1.25 HEX BOLT GR.5	2
3.1	364-58-14-000	FLAPPER ASSY	1	9	R07794	3/8-16 UNC FLANGE NUT - ZINC	10
3.1.1	364-58-01-262	FLAPPER SHAFT	1	10	R07721	3/8-16 UNC x 1 CARRIAGE BOLT Gr.5	1
3.1.2	364-58-01-261	FLAPPER	1	11	R07929	1/4-28 UNF x 0.25 SET SCREW - ZINC	2
3.2	R20216	URETHANE	1				

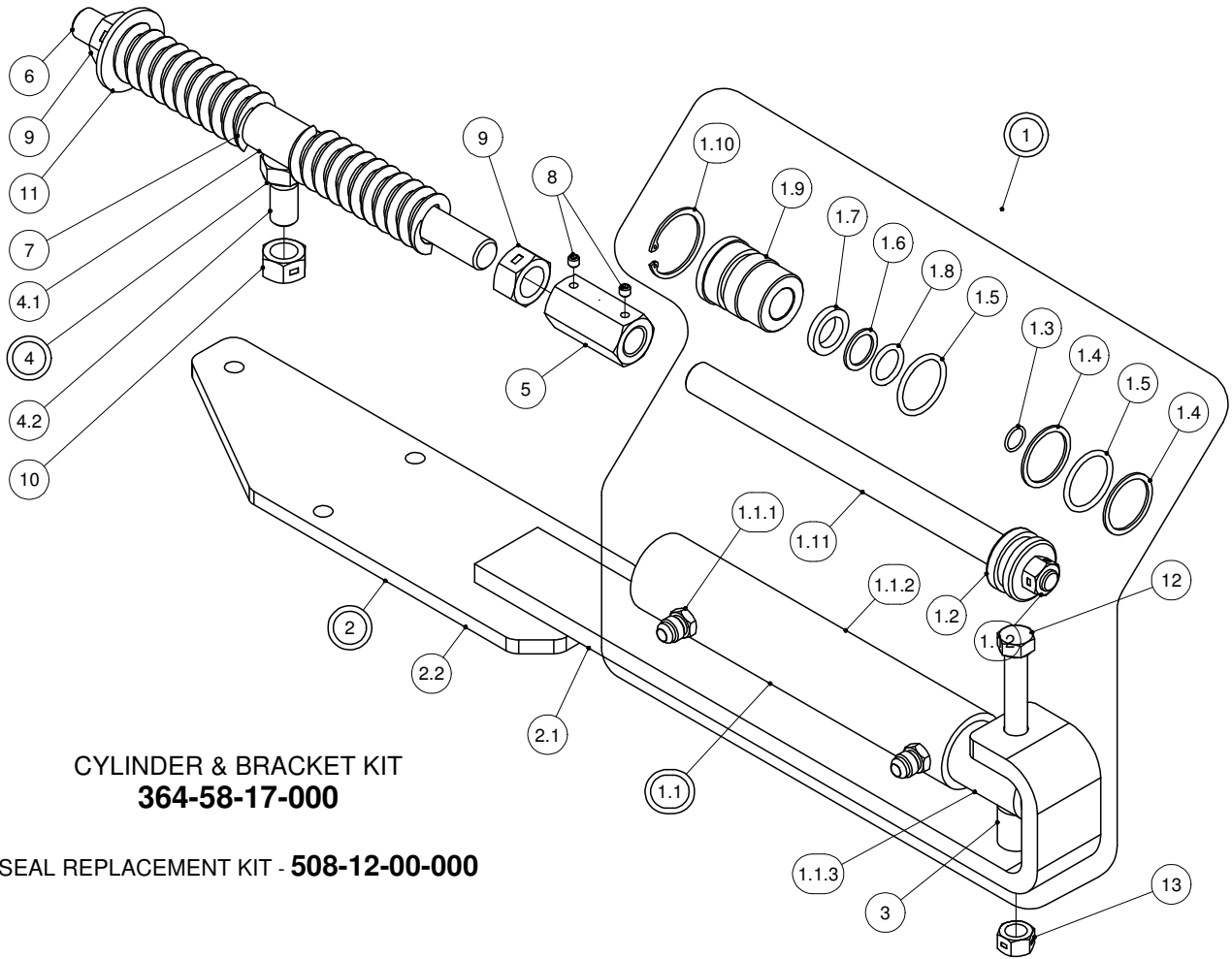
8" FLAPPER BOX KIT



**8" FLAPPER BOX KIT
386-13-00-000**

PARTS LIST				PARTS LIST			
ITEM	PART NUMBER	DESCRIPTION	QTY	ITEM	PART NUMBER	DESCRIPTION	QTY
1	386-07-01-000	8" FLAPPER BOX ASSY	1	3.2	R20225	URETHANE	1
2	386-07-05-000	COVER PLATE ASSY	1	4	386-13-01-000	HORIZONTAL CYLINDER & BRKT KIT-8"	1
2.1	386-07-05-114	COVER PLATE	1	5	364-58-11-000	FLAPPER BRKT ASSY	1
2.2	364-58-02-266	BUSHING SLEEVE	1	5.1	364-58-11-321	BRKT ARM	1
2.3	R20266	1 1/4 OD x 1 ID x 1/2 LONG BUSHING	2	5.2	364-58-11-322	ARM BRKT SLEEVE	1
2.4	R20859	O RING 1 x 1 1/4 x 1/8"	1	6	364-58-08-323	KEY	1
2.5	R07721	3/8-16 UNC x 1 CARRIAGE BOLT Gr.5	2	7	R07879	7/16-14 UNC FLANGE NUT - ZINC	17
3	386-07-06-000	FLAPPER ASSY w/ URETHENE	1	8	R07628	7/16-14 UNC x 1 HEX BOLT GR.5	17
3.1	386-07-04-000	FLAPPER ASSY	1	9	R07794	3/8-16 UNC FLANGE NUT - ZINC	1
3.1.1	386-07-04-113	FLAPPER SHAFT	1	10	R07671	7/16-14 UNC x 1.25 HEX BOLT GR.5	3
3.1.2	386-07-04-112	FLAPPER	1	11	R07906	5/16-18 UNC x 0.31 SET SCREW - ZINC	2

6" CYLINDER & BRKT KIT

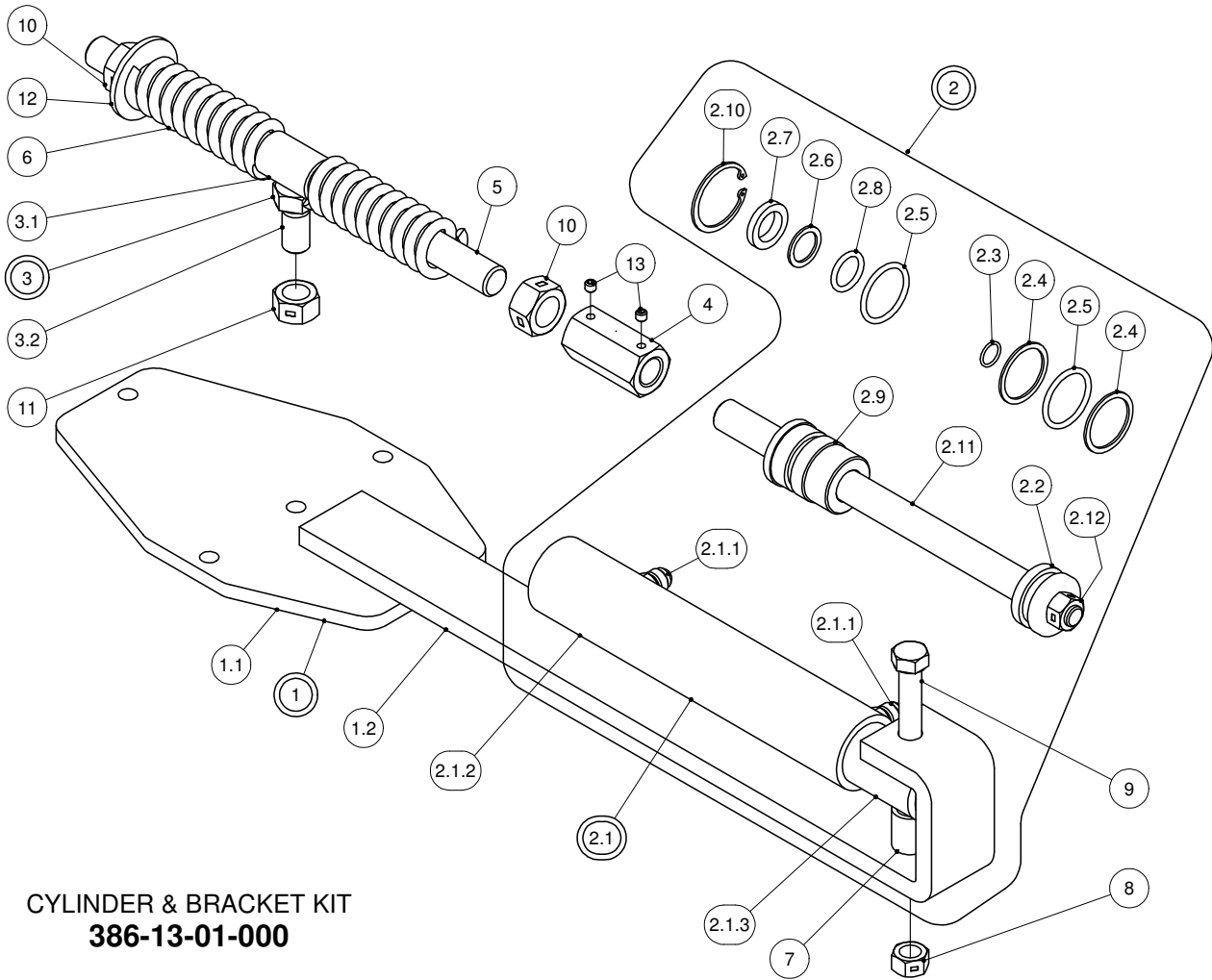


**CYLINDER & BRACKET KIT
364-58-17-000**

SEAL REPLACEMENT KIT - 508-12-00-000

PARTS LIST				PARTS LIST			
ITEM	PART NUMBER	DESCRIPTION	QTY	ITEM	PART NUMBER	DESCRIPTION	QTY
1	508-11-00-000	DEFLECTOR CYL COMPLETE - JIC	1	2	364-58-16-000	CYLINDER BRKT ASSY	1
1.1	508-11-01-000	DEFLECTOR CYL TUBE ASSY - JIC	1	2.1	364-58-09-317	CYLINDER BRKT	1
1.1.1	R23151	3/8" M. JIC WELD FITTING	2	2.2	364-58-16-508	CYLINDER BRKTBOLT PLATE	1
1.1.2	508-11-01-038	DEFLECTOR CYL TUBE - JIC	1	3	364-58-08-318	SPACER PIPE	1
1.1.3	508-11-01-042	DEFLECTOR CYL END CAP - JIC	1	4	364-58-10-000	PIVOT AND SLEEVE ASSY	1
1.2	340-36-00-435	CYLINDER PLUNGER	1	4.1	364-58-10-320	PIVOT SLEEVE	1
1.3	R20865	O-RING #11-014	1	4.2	R07673	5/8-11 UNC x 1.25 HEX BOLT GR.5	1
1.4	R20867	BACKUP RING #8-218	2	5	364-58-08-257	3/4" COUPLER	1
1.5	R20866	O-RING #11-218	2	6	364-58-08-319	EXTENSION SHAFT	1
1.6	R20862	3/4" BACKUP #210	1	7	R08033	HP 68 x 3/4 x 4" SPRING	2
1.7	R20774	3/4" HYTREL ROD WIPER 52-750	1	8	R07910	1/4-20 UNC x 0.25 SET SCREW - ZINC	2
1.8	R20771	O-RING #11-210	1	9	R07881	3/4-10 UNC 2-WAY LOCK NUT - ZINC	2
1.9	508-09-00-039	WIPER BLOCK - JIC	1	10	R07887	5/8-11 UNC 2-WAY LOCK NUT - ZINC	1
1.10	R08198	1 9/16" INTERNAL SNAP RING	1	11	R07827	3/4 FLAT WASHER STD - ZINC	1
1.11	275-15-00-122	HYDRAULIC CYLINDER SHAFT	1	12	R07643	1/2-13 UNC x 4 HEX BOLT GR.5	1
1.12	R07885	1/2-13 UNC 2-WAY LOCK NUT - ZINC	1	13	R07885	1/2-13 UNC 2-WAY LOCK NUT - ZINC	1

8in CYLINDER & BRKT KIT

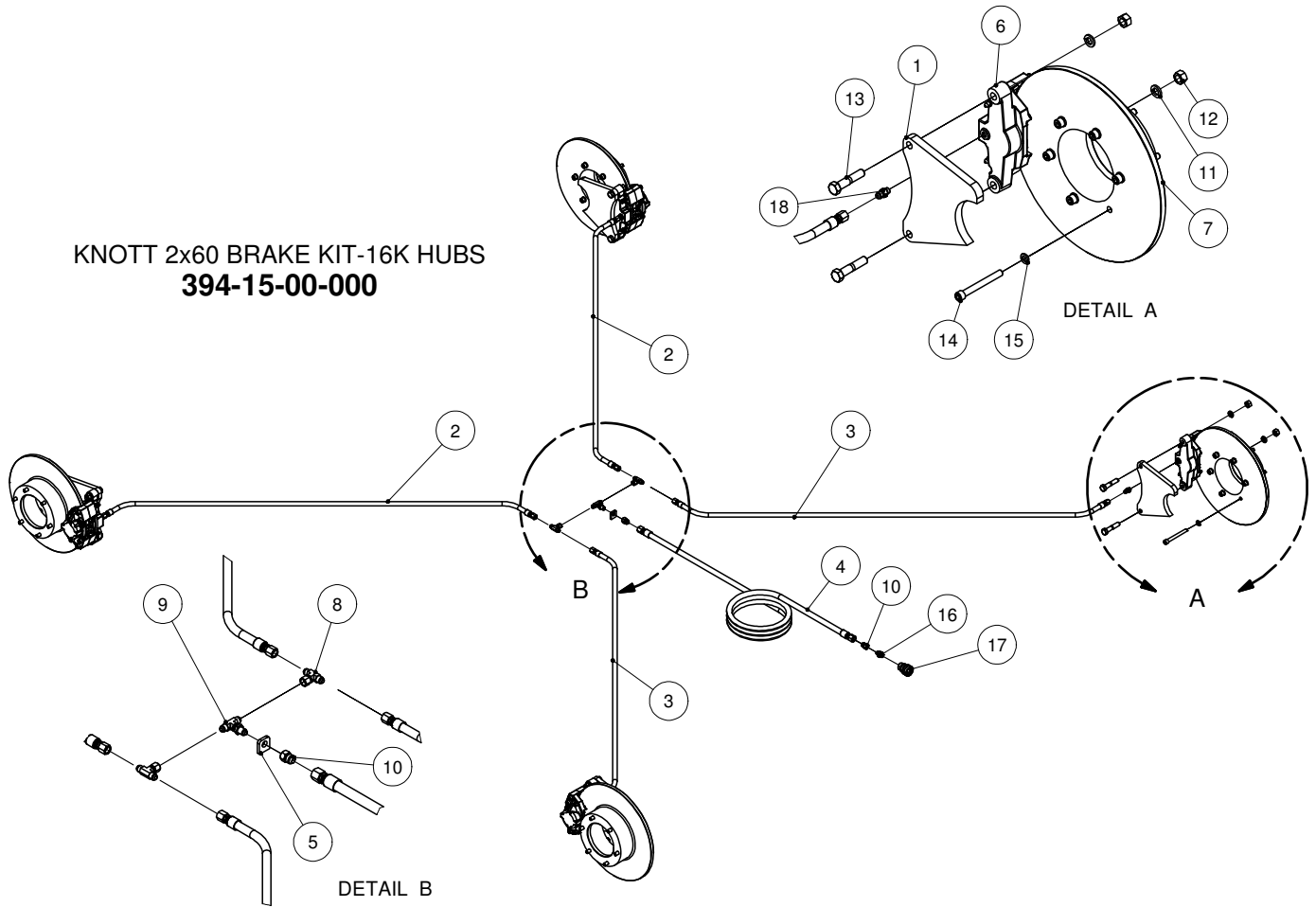


**CYLINDER & BRACKET KIT
386-13-01-000**

SEAL REPLACEMENT KIT - **508-12-00-000**

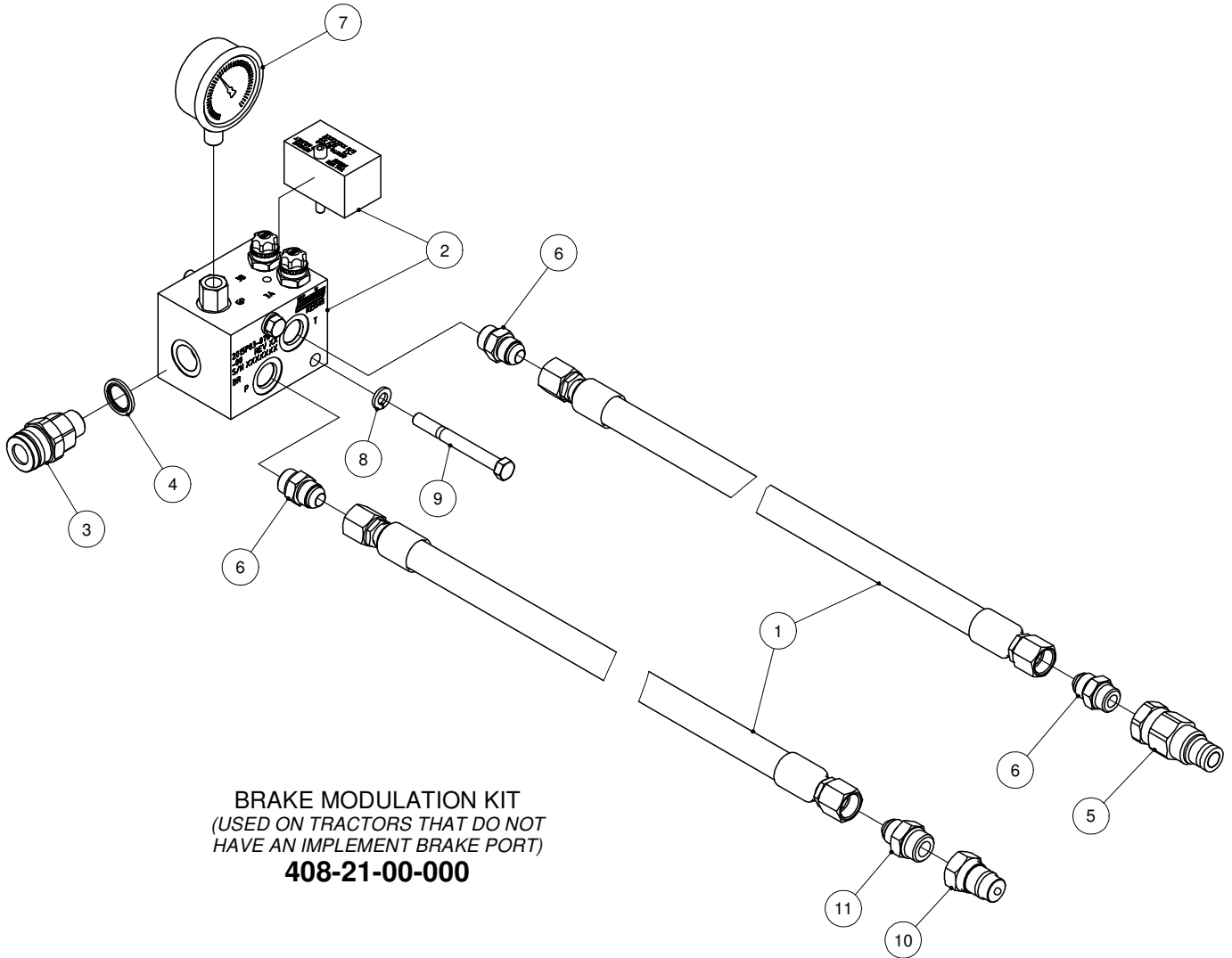
PARTS LIST				PARTS LIST			
ITEM	PART NUMBER	DESCRIPTION	QTY	ITEM	PART NUMBER	DESCRIPTION	QTY
1	386-13-02-000	CYLINDER BRKT ASSY-8" VALVE	1	2.10	R08198	1 9/16" INTERNAL SNAP RING	1
1.1	386-13-02-307	CYLINDER BRKT BOLT PLATE-8"	1	2.11	275-15-00-122	HYDRAULIC CYLINDER SHAFT	1
1.2	386-13-02-342	CYLINDER BRKT (HOR CYLINDER)	1	2.12	R07885	1/2-13 UNC 2-WAY LOCK NUT - ZINC	1
2	508-11-00-000	DEFLECTOR CYL COMPLETE - JIC	1	3	364-58-10-000	PIVOT AND SLEEVE ASSY	1
2.1	508-11-01-000	DEFLECTOR CYL TUBE ASSY - JIC	1	3.1	364-58-10-320	PIVOT SLEEVE	1
2.1.1	R23151	3/8" M. JIC WELD FITTING	2	3.2	R07673	5/8-11 UNC x 1.25 HEX BOLT GR.5	1
2.1.2	508-11-01-038	DEFLECTOR CYL TUBE - JIC	1	4	364-58-08-257	3/4" COUPLER	1
2.1.3	508-11-01-042	DEFLECTOR CYL END CAP - JIC	1	5	364-58-08-319	EXTENSION SHAFT	1
2.2	340-36-00-435	CYLINDER PLUNGER	1	6	R08033	HP 68 x 3/4 x 4" SPRING	2
2.3	R20865	O-RING #11-014	1	7	364-58-08-318	SPACER PIPE	1
2.4	R20867	BACKUP RING #8-218	2	8	R07885	1/2-13 UNC 2-WAY LOCK NUT - ZINC	1
2.5	R20866	O-RING #11-218	2	9	R07643	1/2-13 UNC x 4 HEX BOLT GR.5	1
2.6	R20862	3/4" BACKUP #210	1	10	R07881	3/4-10 UNC 2-WAY LOCK NUT - ZINC	2
2.7	R20774	3/4" HYTREL ROD WIPER 52-750	1	11	R07887	5/8-11 UNC 2-WAY LOCK NUT - ZINC	1
2.8	R20771	O-RING #11-210	1	12	R07827	3/4 FLAT WASHER STD - ZINC	1
2.9	508-09-00-039	WIPER BLOCK - JIC	1	13	R07910	1/4-20 UNC x 0.25 SET SCREW - ZINC	2

KNOTT 2x60 BRAKE KIT-16K HUBS



PARTS LIST			
ITEM	PART NUMBER	DESCRIPTION	QTY
1	394-15-00-106	KNOTT 2x60 CALIPER MOUNT PLATE-16K	4
2	394-15-01-000	BRAKE HOSE ASSY 3/8" - REAR	2
3	394-15-02-000	BRAKE HOSE ASSY 3/8" - FRONT	2
4	394-15-03-000	MAIN BRAKE LINE ASSY-1/2"	1
5	394-15-00-110	BULKHEAD PLATE - 1 HOLE	1
6	R22656	KNOTT 2x60 CALIPER	4
7	R22659	17.5" OD CAST BRAKE ROTOR-16K	4
8	R23120	3/8"M X 3/8"M X 3/8" SW F JIC TEE	2
9	R23222	3/8" JIC BULKHEAD TEE	1
10	R23077	3/8" JIC F. x 1/2" JIC M. BUSHING	2
11	R07806	5/8 LOCK WASHER - ZINC	8
12	R07786	5/8-11 UNC HEX NUT - ZINC	8
13	R08502	5/8-11 UNC x 3 HEX BOLT GR.8	8
14	R08377	1/2-20 UNF x 4.5 SHCS - BLK	24
15	R07805	1/2 LOCK WASHER - ZINC	24
16	R23126	3/8" BSPP M. X 3/8" JIC M. ADAPTER	1
17	R23180	FASTER F. BRAKE COUPLING	1
18	R22149	ORB-5 x 3/8" JIC M. ADAPTER	4

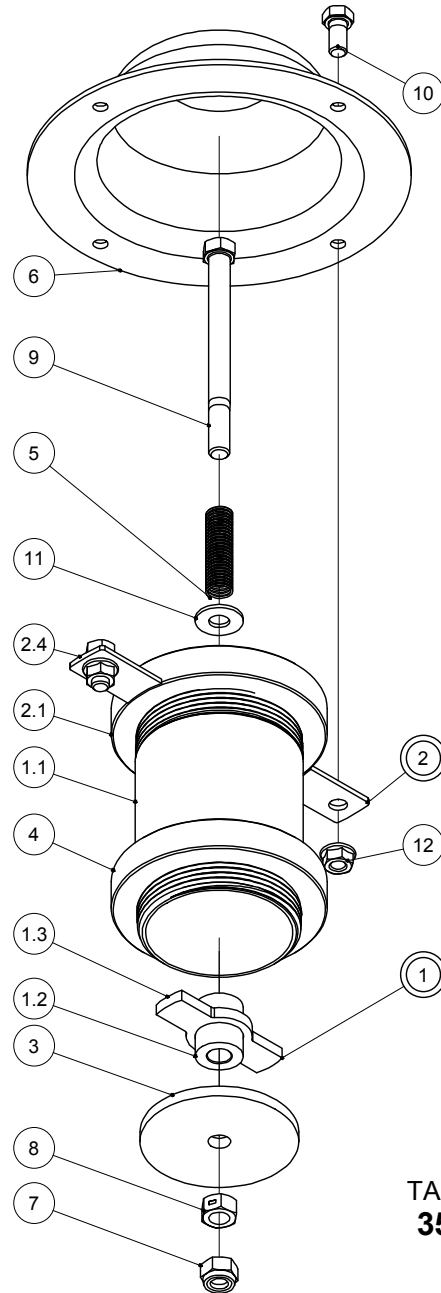
BRAKE MODULATION KIT



BRAKE MODULATION KIT
 (USED ON TRACTORS THAT DO NOT
 HAVE AN IMPLEMENT BRAKE PORT)
408-21-00-000

PARTS LIST			
ITEM	PART NUMBER	DESCRIPTION	QTY
1	408-21-01-000	HYD HOSE ASSY-MANIFOLD TO TRACTOR	2
2	R23505	BRAKE VALVE MANIFOLD-LYNCH	1
3	R23200	1/2" BSPP MALE FASTER COUPLING	1
4	R23148	1/2" BSPP BONDED SEAL	1
5	R23187	FASTER CASE DRAIN NIPPLE ORB-08	1
6	R23092	ORB-8 x 1/2" JIC M. ADAPTOR	3
7	R21251	2-1/2" SS PRESSURE GAUGE 3000 PSI	1
8	R07803	3/8 LOCK WASHER - ZINC	2
9	R07624	3/8-16 UNC x 3.5 HEX BOLT GR.5	2
10	R23182	MALE PIONEER TIP-ORB-10	1
11	R23095	ORB-10 x 1/2" JIC M ADAPTOR	1

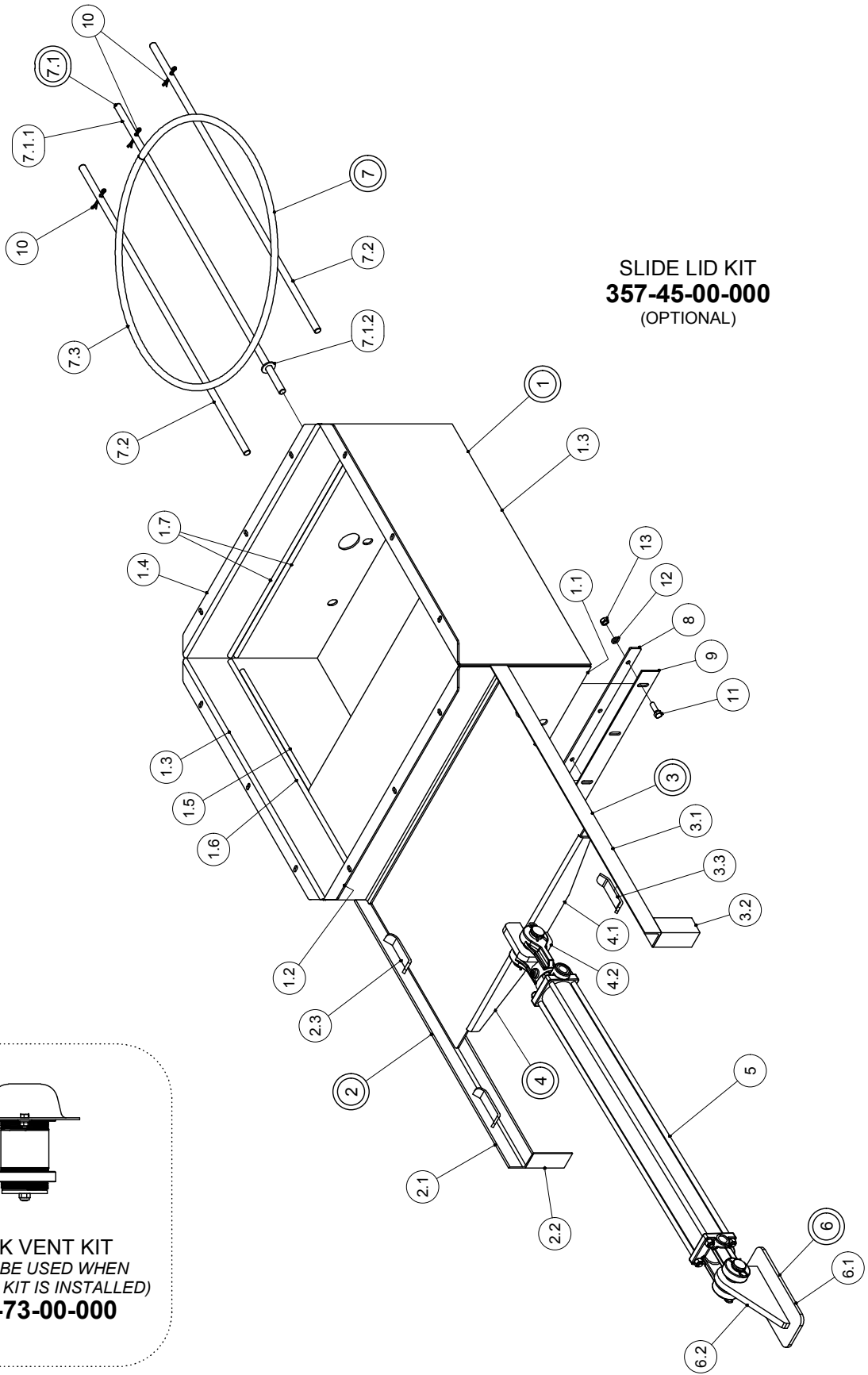
TANK VENT KIT-1



TANK VENT KIT-1
357-73-00-000
(OPTIONAL)

PARTS LIST				PARTS LIST			
ITEM	PART NUMBER	DESCRIPTION	QTY	ITEM	PART NUMBER	DESCRIPTION	QTY
1	357-73-01-000	VENT HSG	1	5	357-51-00-249	SPRING	1
1.1	R03015	3" x 6" TBE SCH 40 PIPE NIPPLE	1	6	R22041	DUST CAP - 25000LB HUB	1
1.2	357-73-02-368	BOLT SLEEVE	1	7	R08178	7/16-14 UNC NYLOCK NUT - ZINC	1
1.3	357-73-02-367	STRAP	1	8	R07891	7/16-14 UNC 2-WAY LOCK NUT - ZINC	1
2	357-73-02-000	VENT NUT ASSY	1	9	R07635	7/16-14 UNC x 5 HEX BOLT GR.5	1
2.1	357-73-02-365	STRAIGHT THD PIPE NUT	1	10	R07688	3/8-16 UNC x 0.75 HEX BOLT GR.5	2
2.4	357-73-02-366	CAP MTG BRKT	2	11	R07823	3/8 FLAT WASHER STD - ZINC	1
3	R03066	UHMW VENT PLUG	1	12	R07794	3/8-16 UNC FLANGE NUT - ZINC	2
4	357-73-02-365	STRAIGHT THD PIPE NUT	1				

SLIDE LID KIT



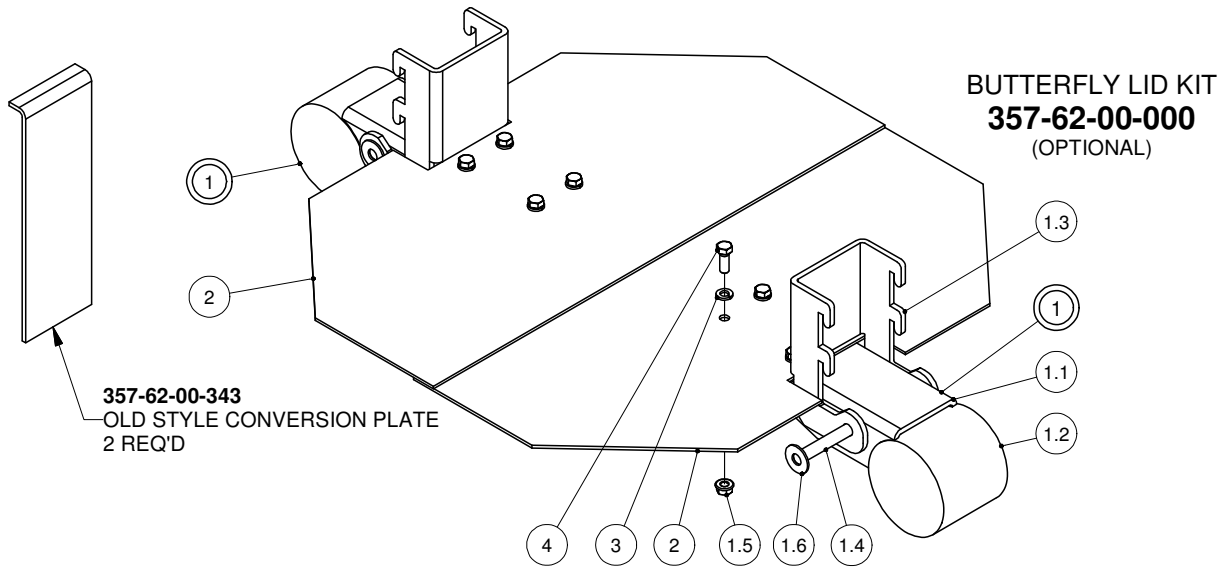
SLIDE LID KIT
357-45-00-000
(OPTIONAL)

TANK VENT KIT
(MUST BE USED WHEN
SLIDE LID KIT IS INSTALLED)
357-73-00-000

SLIDE LID KIT

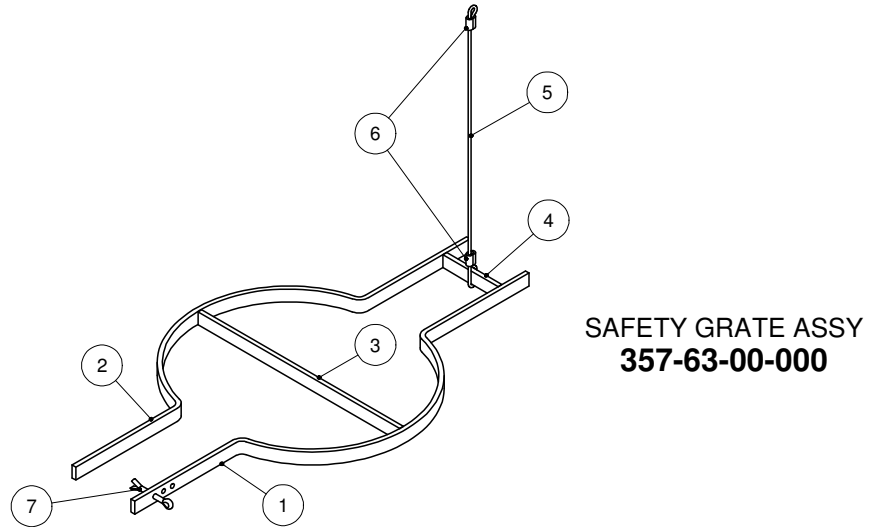
PARTS LIST			
ITEM	PART NUMBER	DESCRIPTION	QTY
1	357-45-01-000	24" SLIDE LID ASSY	1
1.1	357-45-01-204	SLIDE LID FRONT LOWER PANEL	1
1.2	357-45-01-205	SLIDE LID FRONT UPPER PANEL	1
1.3	357-45-01-202	24" SLIDE LID SIDE	2
1.4	357-45-01-203	SLIDE LID REAR PANEL	1
1.5	357-45-01-257	SIDE LOWER GUIDE BARS	2
1.6	357-45-01-206	SIDE UPPER GUIDE BARS	2
1.7	357-45-01-207	REAR GUIDE BAR	2
2	357-45-02-000	RH SLIDE RAIL ASSY	1
2.1	357-45-02-209	SLIDE RAIL	1
2.2	357-45-02-210	SLIDE RAIL LEG	1
2.3	357-45-02-208	LOWER GUIDE	2
3	357-45-04-000	LH SLIDE RAIL ASSY	1
3.1	357-45-02-209	SLIDE RAIL	1
3.2	357-45-02-210	SLIDE RAIL LEG	1
3.3	357-45-02-208	LOWER GUIDE	2
4	357-45-03-000	24" SLIDING LID ASSY	1
4.1	357-45-03-213	24" SLIDE LID	1
4.2	357-45-03-214	SLIDE LID LUG	1
5	R23274	20TH24 HYD CYL-ORB	1
	R21575	3.25" x 24" AIR CYLINDER	*
6	357-45-07-000	TANK LUG ASSY FOR HYD/AIR CYLINDER	1
6.1	368-54-02-425	CYLINDER BRKT BASE PLATE	1
6.2	357-45-07-254	TANK LUG FOR HYD/AIR CYLINDER	1
7	357-45-09-000	SAFETY GRATE ASSY	1
7.1	357-45-08-000	SAFETY BAR ASSY	1
7.1.1	357-45-08-274	SAFETY BAR	1
7.1.2	R08222	1/2 FLAT WASHER SAE - SS	1
7.2	357-45-08-274	SAFETY BAR	2
7.3	357-45-09-314	SAFETY RING	1
8	357-45-00-211	SLIDE LID RUBBER STRAP	1
9	357-45-00-212	RUBBER	1
10	R08207	5/32 x 1 1/2 COTTER PIN - SS	3
11	R07611	5/16-18 UNC x 1 HEX BOLT GR.5	5
12	R07802	5/16 LOCK WASHER - ZINC	5
13	R07782	5/16-18 UNC HEX NUT - ZINC	5

BUTTERFLY LID & SAFETY GRATE



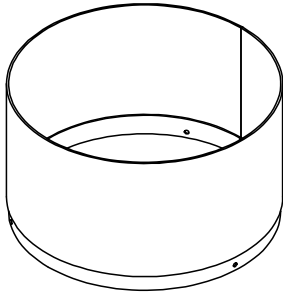
NOTE: WITH INSTALLATION OF A BUTTERFLY LID, A SAFETY GRATE MUST BE USED TO LOCK LID IN PLACE

PARTS LIST				PARTS LIST			
ITEM	PART NUMBER	DESCRIPTION	QTY	ITEM	PART NUMBER	DESCRIPTION	QTY
1	357-62-01-000	BUTTERFLY HINGE KIT	2	1.5	R07794	3/8-16 UNC FLANGE NUT - ZINC	4
1.1	357-62-01-316	U - CHANNEL HINGE	1	1.6	R07824	7/16 FLAT WASHER STD - ZINC	2
1.2	357-62-01-317	COUNTER WEIGHT	1	2	357-62-00-318	BUTTERFLY LID	2
1.3	357-62-01-319	DROP-IN HINGE	1	3	R08319	3/8 LOCK WASHER - SS	8
1.4	357-62-01-315	HINGE PIN	1	4	R07619	3/8-16 UNC x 1 HEX BOLT GR.5	8



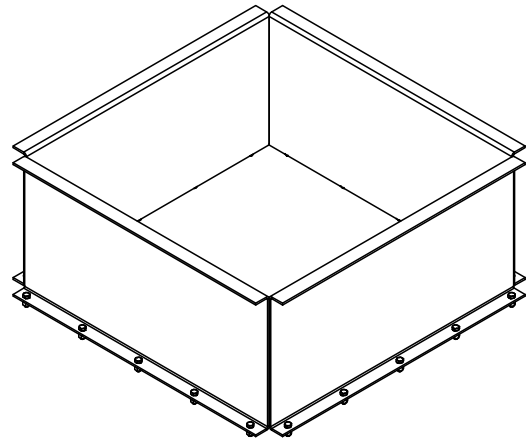
PARTS LIST			
ITEM	PART NUMBER	DESCRIPTION	QTY
1	357-63-00-320	SAFETY BAR w/ HOLE	1
2	357-63-00-332	SAFETY BAR	1
3	357-63-00-321	CROSS SAFETY BAR	1
4	357-63-00-322	STOP BAR	1
5	357-63-00-331	SAFETY CABLE	1
6	R08068	1/8" ALUMINUM CRIMP SLEEVES	2
7	R08016	1/4 x 2 COTTER PIN	1

FILL HOLE OPTIONS

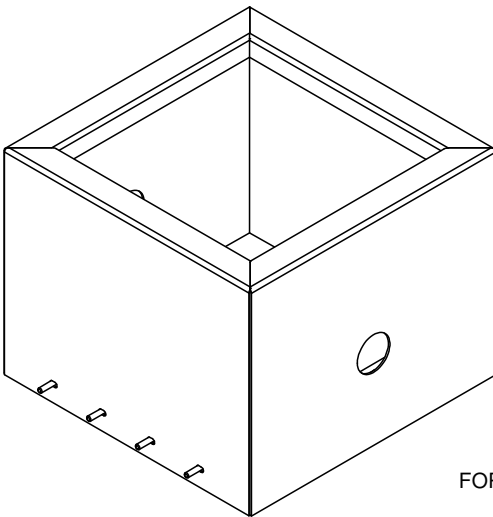


12" FILL HOLE EXTENSION
FOR Ø24" ROUND FILL HOLE
408-20-00-000

6" FILL HOLE EXTENSION
FOR Ø24" ROUND FILL HOLE
358-16-00-000

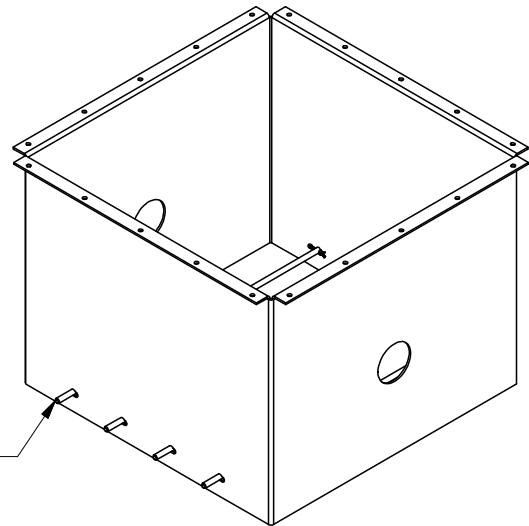


14" FILL HOLE EXTENSION
FOR 30" SQ LIP OUT FILL HOLE
356-15-00-000



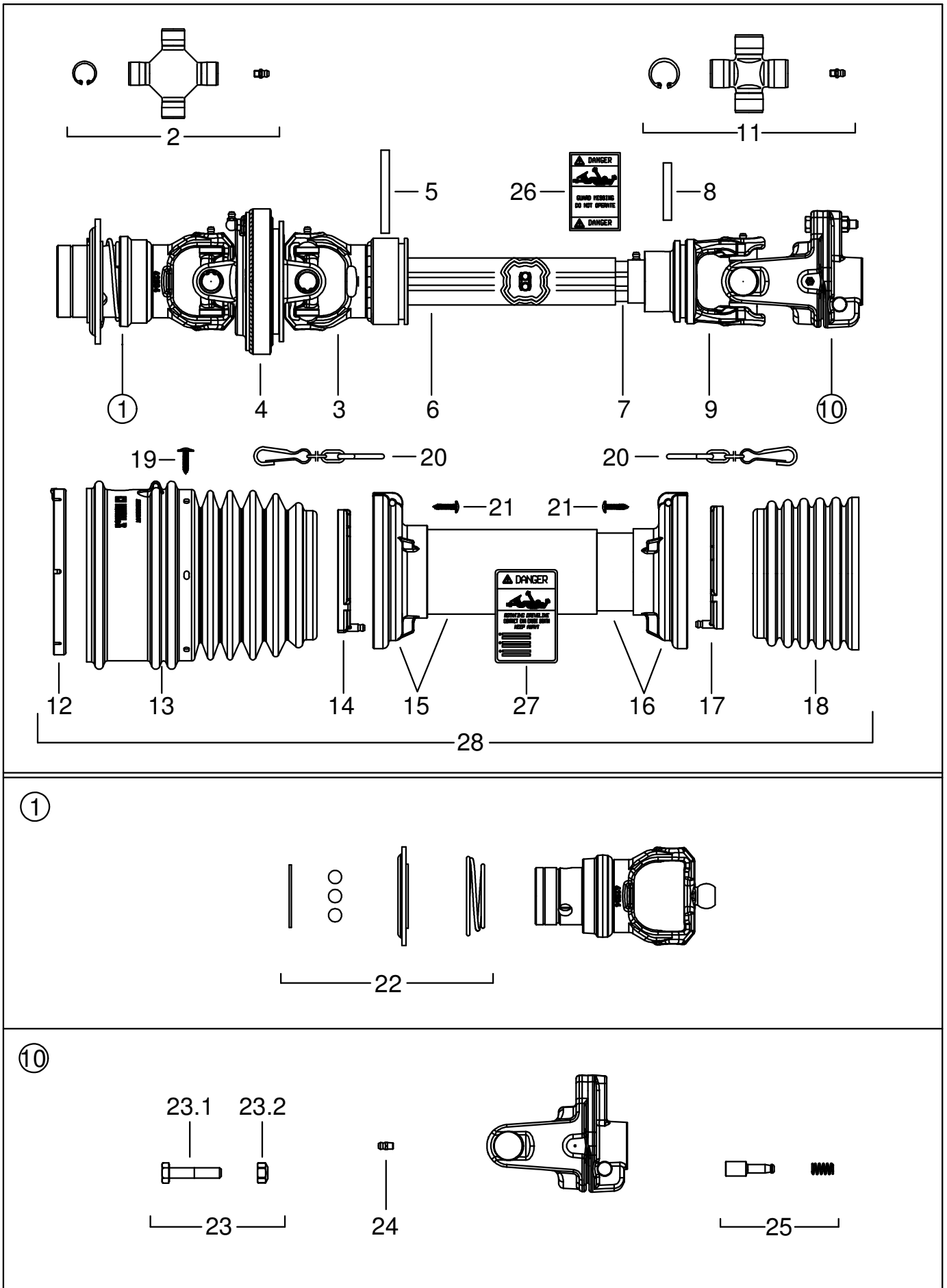
30" SQUARE FILL HOLE
"LIP IN"
384-29-00-000

SAFETY BAR ASSY
FOR 30" SQ FILL HOLES
384-28-00-000



30" SQUARE FILL HOLE
"LIP OUT"
356-14-00-000

SPREADERS PTO - 2012



SPREADERS PTO - 2012

R21582 - 1 3/8" 6 TOOTH - 540 RPM

R21583 - 1 3/8" 21 TOOTH - 1000 RPM

R21584 - 1 3/4" 20 TOOTH - 1000 RPM

PARTS LIST				
ITEM	MFG #	PART NUMBER	DESCRIPTION	QTY
1	5730E0384	R22707	#4 1-3/8" CV YOKE - 6 TOOTH SLIDING YOKE COLLAR - 540rpm	1
	5730E3784	R22706	#4 1-3/8" CV YOKE - 21 TOOTH SLIDING YOKE COLLAR - 1000rpm	1
	5730E3884	R22708	#4 1-3/4" CV YOKE - 20 TOOTH SLIDING YOKE COLLAR - 1000rpm	1
2	4120E0051	R22709	#4 CROSS KIT - 22x86mm	2
3	2150E6871	R23381	#4 OUTER TUBE YOKE	1
4	5110E0052	R22711	#4 CENTRAL BODY-CV	1
5	341078000	R23382	FLEXIBLE ROLL PIN - 8x80mm	1
6	2253L1050	R23383	#4 OUTER DRIVE TUBE - L=1050mm	1
7	528S4R121WN	R23384	#4 INNER DRIVE TUBE - L=1075mm	1
8	341048000	R21476	FLEXIBLE ROLL PIN - 8x55mm	1
9	204S46853	R23385	#4 TUBE YOKE 4 LOBE - INNER	1
10	6060E0302	R22712	#4 SHEAR CLUTCH 1700Nm 1-3/8" 6T - PUSH PIN	1
11	4120E0012	R23386	#4 CROSS KIT - 27x74.6mm GREASE ZERK CAP	1
12	2550E0005	R23387	SHIELD OUTER BELL SUPPORT	1
13	2190E0121	R23388	CONE SHIELD BELL - OUTER	1
14	2550C0001	R23389	SHIELD SUPPORT - OUTER TUBE	1
15	5TWN3S4121U	R23390	#4 SHIELD TUBE & CONE - OUTER	1
16	5MWN3S4121U	R23391	#4 SHIELD TUBE & CONE - INNER	1
17	2550C0002	R23392	SHIELD SUPPORT - INNER TUBE	1
18	2190E0201	R23393	CONE SHIELD BELL - INNER	1
19	310001428	R22719	SCREW FLANGE HEAD - SELF TAP 4.8x22mm	6
20	252000050	R21738	SHIELD CHAIN w/ S-HOOK L=500mm	2
21	310001431	R23394	SCREW - SELF TAP 4.8x22mm	6
22	435000323	R22722	BALL COLLAR KIT 1-3/8" 6T & 1-3/8" 21T	1
	435000420	R22723	BALL COLLAR KIT 1-3/4" 20T	1
23	432000047	357-36-00-000	SHEAR BOLT & NUT - 5/PACK	1
23.1	-	R08251	M8x1.25x45 BOLT GR8.8 (NOT FOR INDIVIDUAL SALE)	1
23.2	-	R08252	M8x1.25 NYLOCK NUT (NOT FOR INDIVIDUAL SALE)	1
24	348017000	R21687	GREASE FITTING M6x1 STRAIGHT	1
25	403000001	R22724	COMPLETE PUSH PIN 1-3/8" 6T	1
26	399143000	R21523	DANGER SHIELD MISSING LABEL	1
27	399141000	R21521	DANGER ROTATING DRIVELINE LABEL	1
28	5CS4121U2WSG	R23395	COMPLETE SHIELD KIT	

HUSKY FARM EQUIPMENT LIMITED

ALMA, ON

NOB 1A0

PHONE: (519) 846-5329

FAX: (519) 846-9378

FIVE YEAR AXLE WARRANTY

Husky Farm Equipment Limited will guarantee for five (5) years from date of invoice, all Manure Spreader undercarriages and axle assemblies, if used on a farm for farm purposes.

Husky will replace free of charge:

1. Any part of the axle which should break or collapse through normal use.
2. Any spindles or hubs which should break through normal use.
3. Any wheel and rim assemblies which should fail through normal use.

Exempt from extended warranty are:

1. Any part of the axle which should break or collapse through overload. Overload includes: Any attachments (ie. injectors) and any product being transported in Spreader weighing more than 10 lb/gallon. (ie. manure mixed with sand).
2. Bearings and tires which are covered under normal warranty and do require maintenance to avoid failure.
3. Wheel or rim damage resulting from owner failing to keep wheel bolts tight.
4. Spindles damaged through bearing failure.
5. Any axle that is custom built.
6. Any axle used in commercial custom hauling applications.

To qualify for extended warranty, damaged parts must be returned to Husky Farm Equipment Limited, prepaid shipping, along with serial number and copy of the original invoice.

All parts supplied by Husky on warranty, will be shipped freight collect. Extended warranty covers damaged parts only and does not cause liability on Husky for any damage resulting from such failure.

TEN YEAR WARRANTY AGAINST RUSTOUT

Husky Farm Equipment provides a ten (10) year warranty from date of invoice, against premature perforation (rust out) of any liquid manure spreader manufactured. Providing the manure spreader is used for manure or sludge and not for chemical products.

Extended warranty is pro rated and will be paid only through the crediting off of the then current list price of a replacement manure spreader of the portion of warranty not used up in time.

Warranty will be effective toward replacing spreader only and no cash payment will be made. It will be understood that the original equipment to be replaced will then become property of Husky Farm Equipment Limited.

This extended warranty will be effective through Husky Farm Equipment factory or factory outlet only. A copy of the original invoice is to be supplied along with the serial number. This warranty will not be effective for commercial custom haulers or to owners other than the original.

Transportation to and from the factory is to be paid for by the owner of the equipment and not by Husky Farm Equipment Limited.